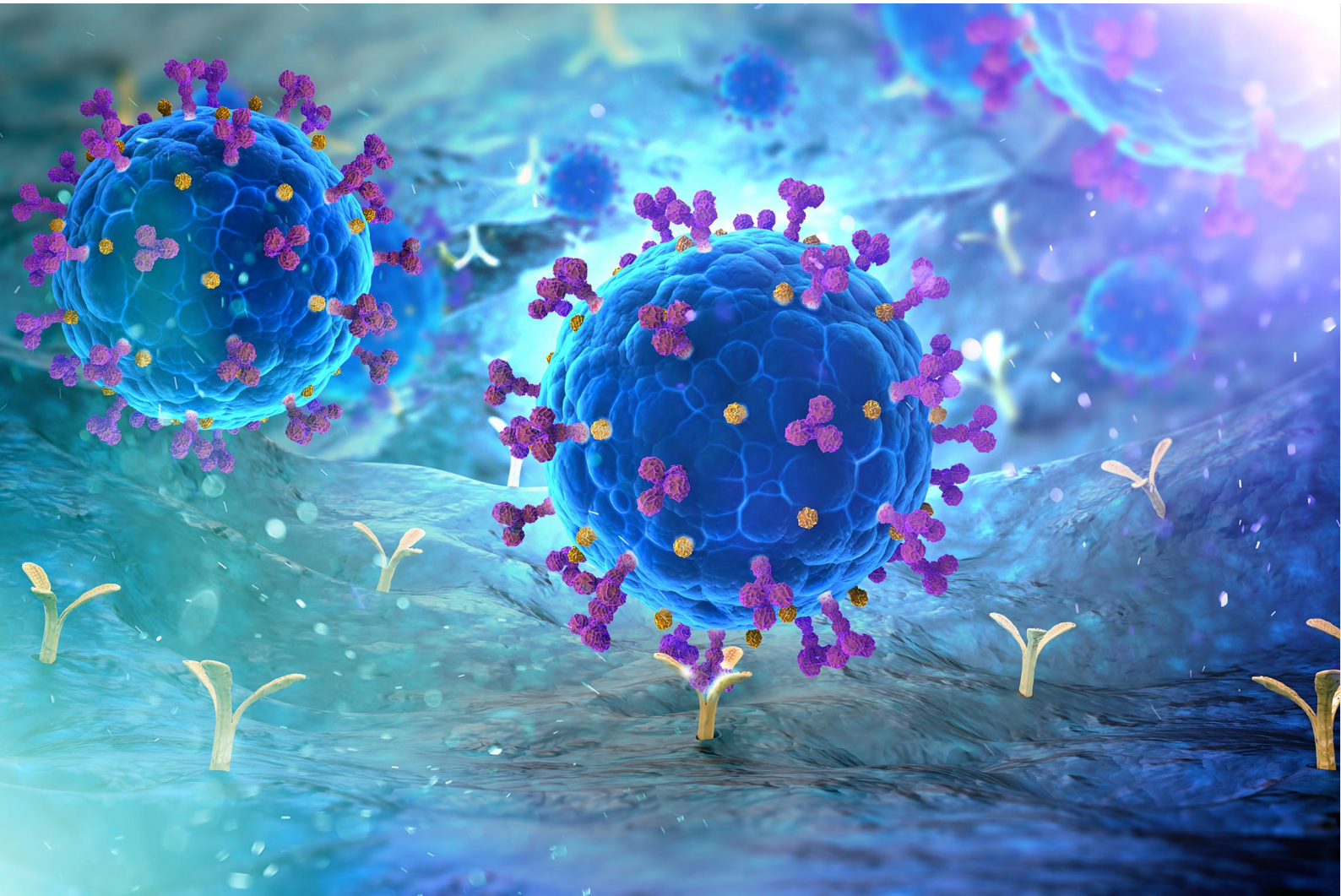


Viral Respiratory Infections Catalogue



Key Antibodies and Antigens for Viral Respiratory Infection Diagnosis

These reagents from Creative Diagnostics are manufactured to the highest quality standards and performance is guaranteed for the applications listed in the detailed datasheets.

Content

Respiratory Syncytial Virus.....	3
Influenza Virus	5
Parainfluenza Virus	18
Metapneumovirus	19
Human Coronavirus	20
Rhinovirus.....	28
Adenovirus	29
Contact Us.....	31

The respiratory system is characterized by an extensive surface of contact with the external environment. Consequently, despite the several specific and non-specific defense mechanisms, it is particularly exposed to pathogenic microorganisms (especially viruses), and the resulting infections are by far the most frequent respiratory pathologies. Viral respiratory infections are one of the most common causes of medical visits and hospitalizations worldwide and are associated with significant morbidity and mortality. Respiratory infections are typically acute and include upper respiratory tract infections (rhinitis, pharyngitis and pharyngotonsillitis, otitis, sinusitis, and laryngitis) and lower respiratory tract infections such as bronchitis, bronchiolitis, and pneumonia. The latter is currently the third leading cause of death worldwide.

Many viruses have been identified as etiological agents of respiratory infections. Common viral pathogens include respiratory syncytial viruses (RSVs), influenza viruses, parainfluenza viruses, metapneumoviruses, human coronaviruses, rhinoviruses, and adenoviruses.

Respiratory Syncytial Virus

RSV is a common respiratory virus that usually causes mild, cold-like symptoms but can cause more serious problems such as bronchiolitis and pneumonia in infants and young children. RSV has two major subtypes: A and B. Although both strains often circulate together, only one causes the majority of infections at any given time.

Several types of laboratory tests are available for the diagnosis of RSV infection, including ELISA, rapid lateral flow, Direct Fluorescent Antibody Detection (DFA), neutralization assay and RT-PCR. Most clinical laboratories currently utilize EIA antigen detection tests and supplement antigen testing with cell culture or immunofluorescence assays to confirm the diagnosis.

Antigen detection tests and culture are generally reliable in young children but are less useful in older children and adults. Because of its thermolability, the sensitivity of RSV isolation in cell culture from respiratory secretions can vary among laboratories. IgG and IgM antibody tests are less commonly used for routine diagnosis.

Ordering Information

Cat. No.	Product Name	Host	Matched Pair
Antibody pairs			
DMABP-L43	Anti-RSV Mab, Clone K469	Mouse	DMABP-L44 - DMABP-L43
DMABP-L44	Anti-RSV Mab, Clone K470	Mouse	
DCABY-4812	Anti-RSV Mab, Clone N04042232	Mouse	DCABY-4810 - DCABY-4810 DCABY-4810 - DCABY-4811 DCABY-4810 - DCABY-4812
DCABY-4811	Anti-RSV Mab, Clone N06002432	Mouse	
DCABY-4810	Anti-RSV Mab, Clone N2232903	Mouse	
CABT-B335	Anti-RSV Mab, Clone 2312	mouse	CABT-B335 - CABT-B335
CABT-CS270	Anti-RSV F Protein Mab, Clone 413	Rabbit	CABT-CS269 - CABT-CS270
CABT-CS269	Anti-RSV F Protein Mab, Clone S449	Rabbit	
Cat. No.	Product Name	Host	Application
Other antibodies			
CABT-L6335	Anti-RSV Mab, Clone D25	Human	Neut
DMABT-H21832	Anti-RSV Mab, Clone 244-2I	Mouse	ELISA, IF
DMABT-51514MR	Anti-RSV Mab, Clone 3028/95	Mouse	IHC, ELISA, FC, WB
DMABT-H21834	Anti-RSV (type A, B) F Protein Mab, Clone 240-9G	Mouse	IF
DCABY-814	Anti-RSV F Protein Mab, Clone 792	Mouse	ELISA, IF

DCABY-561	Anti-RSV F Protein Mab, Clone STW4327 (C027)	Mouse	ELISA, EM, FC, IF, IP, WB
CABT-NS1787	Anti-RSV F Protein Mab, Clone 10	Rabbit	ELISA
CABT-L2695	Anti-RSV Pre-F Protein Mab, Clone STC54	Human	Neut, IF
CABT-L2696	Anti-RSV Pre-F Protein Mab, Clone STC54	Rabbit	Neut, IF
CABT-L2693	Anti-RSV Pre-F Protein Mab, Clone STC30	Human	Neut, IF
CABT-L2694	Anti-RSV Pre-F Protein Mab, Clone STC30	Rabbit	Neut, IF
CABT-L2689	Anti-RSV Pre & Post-F Protein Mab, Clone STC26	Human	Neut, IF
CABT-L2690	Anti-RSV Pre & Post-F Protein Mab, Clone STC26	Rabbit	Neut, IF
CABT-L2691	Anti-RSV Pre & Post-F Protein Mab, Clone STC27	Human	Neut, IF
CABT-L2692	Anti-RSV Pre & Post-F Protein Mab, Clone STC27	Rabbit	Neut, IF
DMABT-Z60929	Anti-RSV G Protein Mab, Clone USX245	Mouse	ELISA, WB, ICC/IF, IHC-Fr
CABT-NS1221	Anti-RSV G Protein Mab, Clone 131-2G	Mouse	ELISA
CABT-NS1220	Anti-RSV G Protein Mab, Clone 131-2G	Rabbit	ELISA
CABT-NS1222	Anti-RSV G Protein Mab, Clone 131-2G	Human	ELISA
DCABY-562	Anti-RSV NP Mab, Clone STW4243 (C034)	Mouse	IHC, ELISA, IF
DMABT-H21833	Anti-RSV NP Mab, Clone 240-231	Mouse	ELISA, IF
DMABT-Z60928	Anti-RSV Phosphoprotein Mab, Clone USXJ204	Mouse	ELISA, WB, IP, ICC/IF, IHC-Fr
DPAB-DC4024	Anti-Bovine RSV Pab	Rabbit	WB
DPATB-H83579	Anti-RSV Pab	Rabbit	WB
DPBT-66923GR	Anti-RSV Pab	Goat	IHC, ELISA, IF
DPBT-66921GR	Anti-RSV Pab [Biotin]	Goat	IHC, ELISA
DPBT-66922GR	Anti-RSV Pab [HRP]	Goat	IHC, ELISA, IF, WB
DPAB0233	Anti-RSV Pab [FITC]	Goat	IHC, ELISA, FC, WB
DPAB-DC4698	Anti-RSV F Protein Pab	Rabbit	WB
DPAB-DC4696	Anti-RSV M2 Pab	Rabbit	WB
CABT-CS600	Anti RSV Fusion protein Mab (Palivizumab)	Human	ELISA
CABT-Z668H	Anti-RSV Mab, Clone RSHZ19 (Felvizumab)	Human	ELISA
CABT-NS1224	Anti-RSV Mab, Clone RSHZ19 (Felvizumab)	Ferret	ELISA
CABT-NS1225	Anti-RSV Mab, Clone RSHZ19 (Felvizumab)	Mouse	ELISA
Antigens			
DAG3087	Native RSV (Strain Long) Antigen	Hep-2 Cells	SDS-PAGE
DAG-LL001	Native RSV Type B Lysate	Vero Cells	WB, Immunoassays
DAG-WT315	RSV F Protein [His]	Mammalian Cells	ELISA, Lateral Flow
DAG-H10339	RSV F Protein (Met 1-Asn 524) [His]	Insect Cells	SDS-PAGE
DAG-H10334	RSV F Protein (A2, Met 1-Thr 529) [His]	Insect Cells	SDS-PAGE

DAG-H10340	RSV F Protein (RSS-2, Met 1-Thr 529) [His]	Insect Cells	SDS-PAGE
DAG-WT1180	RSV Post-F Protein FO	Mammalian Cells	Immunogen, Calibrator, Standard
DAG-WT1165	RSV Pre-F Protein FO	Mammalian Cells	Immunogen, Calibrator, Standard
DAG-H10336	RSV G Protein (B1, His 67-Ala 299) [His]	HEK293 Cells	SDS-PAGE
DAG-H10338	RSV G Protein (Asn 66-Arg 297) [His]	HEK293 Cells	SDS-PAGE
DAG-H10337	RSV G Protein (Asn 66-Arg 297) [His]	Insect Cells	SDS-PAGE
DAG2322	RSV NP (a.a. 1-391) [His]	E. coli	WB, ELISA, Immunogen
DAG2607	RSV Active Src Protein [GST]	Insect Cells	SDS-PAGE

Influenza Virus

Influenza is a highly contagious respiratory illness caused by the influenza virus. Common symptoms include fatigue, fever, chills, hacking cough, and body aches, which may resolve on their own in 1-2 weeks, however, complications can occur and lead to life-threatening secondary infections. There are three main types of influenza virus (types A, B and C) that cause infection in humans and these are further characterized into subtypes and strains. The annual emergence of new flu strains is due to the ability of the influenza virus to mutate slowly (through small genetic changes called antigenic drift) and quickly through a process called reassortment. Antigenic drift is responsible for the seasonal variations every year and reassortment is responsible for the development of new strains that can cause pandemics.

Flu A virus is the most common flu virus that infects humans, animals, and birds. It is divided into subtypes based on the nature of their surface glycoproteins, HA and NA. There are 18 different HAs and 11 NAs that can be distinguished serologically (antibodies to one virus subtype do not react with another). In comparison, Flu B infection is divided into lineages and strains and current circulating strains only belong to one of two lineages: B/Victoria and B/Yamagata. Influenza C viruses, unlike Flu A or B, only cause a mild respiratory illness in humans and secondary complications are rare. Flu C is structurally different from Flu A and B viruses and contains a glycoprotein called HEF (hemagglutinin-esterase-fusion). Flu B and Flu C primarily infect humans and do not cause pandemics.

Diagnostic influenza tests include rapid influenza diagnostic tests (RIDTs), direct fluorescent antibody stains, viral cultures and molecular assays. The tests typically distinguish influenza A from influenza B, and can also identify influenza A subtypes 2009 H1N1, H1, H3, H5, N1, or N2.

RIDTs have been in routine use since their initial FDA approval in 1999 and typically detect both influenza A and influenza B. Many RIDTs detect the nucleoprotein (NP), which is one of the more conserved proteins in the influenza virus and subsequently less likely to undergo mutations that lead to antigenic drift (which can cause the functional components of a RIDT to fail to recognize a current influenza strain).

Ordering Information

Cat. No.	Product Name	Host	Matched Pair
Antibody pairs			
DCABY-4497	Anti-IAV NP Mab	Mouse	DCABY-4497 - DCABY-4498
DCABY-4498	Anti-IAV NP Mab	Mouse	
DCAB-TJ119	Anti-IAV NP Mab	Mouse	DCAB-TJ119 - DCAB-TJ121
DCAB-TJ121	Anti-IAV NP Mab	Mouse	
DCABY-4738	Anti-IAV NP Mab	Mouse	DCABY-4738 - DCABY-4739
DCABY-4739	Anti-IAV NP Mab	Mouse	

CABT-CS239	Anti-IBV NP Mab	Mouse	CABT-CS239 - CABT-CS240
CABT-CS240	Anti-IBV NP Mab	Mouse	
DMAB3820	Anti-IBV NP Mab	Mouse	DMAB3820 - DCAB-TJ115 DMAB3819 - DCAB-TJ115
DCAB-TJ115	Anti-IBV NP Mab	Mouse	
DMAB3819	Anti-IBV NP Mab	Mouse	
Cat. No.	Product Name	Host	Application

Neutralizing antibodies

CABT-NS1230	Anti-IAV HA Mab, Clone CR9114	Human	Neut
CABT-YN1204	Anti-IAV HA Globular Head Mab, Clone Flu-5J8	Human	ELISA, FC, Neut
CABT-NS1028	Anti-IAV HA Mab, Clone D280	Rabbit	IP, Neut, ELISA
CABT-NS1029	Anti-IAV HA Mab, Clone D280	Mouse	IP, Neut, ELISA
CABT-NS1067	Anti-IAV H1N1 HA Mab, Clone 3-23D	Rabbit	HI, Neut, ELISA, IF
CABT-YN1154	Anti-IAV H1N1 HA Mab, Clone 8C3.43	Mouse	HI, Neut, IF, ELISA, WB
CABT-YN1156	Anti-IAV H1N1 M2 (A/WSN/1933) Mab, Clone 25D3	Mouse	WB, FC, ICC, IF, IP, BL, Neut
CABT-CS766	Anti-IAV H2N2 HA Mab	Mouse	ELISA, Neut, IF, IP
CABT-CS772	Anti-IAV H3N2 HA Mab	Mouse	Neut, WB, ELISA, IP, IF
CABT-CS773	Anti-IAV H3N2 HA Mab	Mouse	Neut, ELISA, IP, IF
CABT-B2102	Anti-IAV H5N1 HA Mab	Mouse	ELISA, WB, Neut
CABT-B2103	Anti-IAV H5N1 HA Mab	Human	MN, HI
CABT-YN1152	Anti-IAV H5N1 HA Mab, Clone I122	Human	Neut, HI
CABT-B2106	Anti-IAV H7N7 HA Mab	Rabbit	MN, HI
CABT-YN1161	Anti-IAV H7N9 HA Mab, Clone 113	Rabbit	FC, BL, Neut, sELISA
CABT-CS779	Anti-IAV H9N2 HA Mab	Mouse	ELISA, Neut, IF, IP
CABT-B2104	Anti-IAV H10N8 HA Mab	Mouse	MN, HI
CABT-B2105	Anti-IAV H10N8 HA Mab	Human	ELISA, HI
DPAB3965	Anti-IAV H16N3 HA Pab	Rabbit	WB, ELISA, Neut

Subtype	Cat. No.	Product Name	Host	Matched Pair
---------	----------	--------------	------	--------------

Other antibodies

H1N1	CABT-WN1081	Anti-IAV H1N1 Mab	Mouse	sELISA, WB
	CABT-WN1082	Anti-IAV H1N1 Mab	Mouse	sELISA, WB
	DMAB9764	Anti-IAV H1N1 HA Mab	Rabbit	WB, ELISA
	DMABT-Z59708	Anti-IAV H1N1 (A/USSR/90/77) HA Mab	Mouse	ELISA, IHC-Fr, ICC, IF
	CABT-CS082	Anti-IAV H1N1 (A/California/07/2009) HA Mab	Mouse	ELISA, IHC-P, FCM, ICC/IF, IP
	CABT-CS758	Anti-IAV H1N1 (A/California/06/2009) HA Mab	Mouse	WB, ELISA, IP, IF

	CABT-CS759	Anti-IAV H1N1 (A/New Caledonia/20/99) HA Mab	Mouse	WB, ELISA, IP, IF
	CABT-CS761	Anti-IAV H1N1 (A/Brisbane/59/2007) HA Mab	Mouse	WB, ELISA, IP, IF
	CABT-CS763	Anti-IAV H1N1 (A/Michigan/45/2015) HA Mab	Mouse	WB, ELISA, IP, IF
	CABT-CS784	Anti-IAV H1N1 (A/New Caledonia/20/99) NP Mab	Mouse	ELISA, IHC, WB
	DPABY-059	Anti-IAV H1N1 Pab	Goat	WB, IF, IHC-P
	CABT-CS797	Anti-IAV Pan H1N1 HA Pab	Rabbit	WB
	CABT-CS081	Anti-IAV H1N1 (A/California/07/2009) HA Pab	Rabbit	ELISA
	CABT-CS791	Anti-IAV H1N1 (A/California/07/2009) HA1 Pab	Rabbit	WB, ELISA
	CABT-CS792	Anti-IAV H1N1 (A/New Caledonia/20/99) HA1 Pab	Rabbit	WB, ELISA
	CABT-CS806	Anti-IAV H1N1 (A/New Caledonia/20/1999) NA Pab	Rabbit	WB, ELISA
	CABT-CS808	Anti-IAV H1N1 (A/New Caledonia/20/1999) NP Pab	Rabbit	WB, ELISA
	CABT-CS800	Anti-Swine Flu H1N1 (A/California/06/2009) M2 Pab	Rabbit	WB, ELISA
	CABT-CS789	Anti-Swine Flu H1N1 (A/California/06/2009) HA Pab	Rabbit	ELISA, IP
	CABT-CS804	Anti-Swine Flu H1N1 (A/California/06/2009) NA Pab	Rabbit	WB, ELISA
	CABT-CS798	Anti-Swine Flu H1N1 (A/California/06/2009) M1 Pab	Rabbit	WB, ELISA
	CABT-CS809	Anti-Swine Flu H1N1 (A/California/06/2009) NS1 Pab	Rabbit	WB, ELISA, IP
H2N2	DPAB3953	Anti-IAV H2N2 (A/CHICKEN/NY/29878/91) HA Pab	Rabbit	WB, ELISA
	CABT-CS767	Anti-IAV H3N2 (A/Hong Kong/4801/2014) HA Mab	Mouse	WB, ELISA
	CABT-CS770	Anti-IAV H3N2 (A/Shangdong/9/93) HA Mab	Mouse	WB, ELISA
	CABT-CS774	Anti-IAV H3N2 (A/Switzerland/9715293/2013) HA Mab	Mouse	ELISA, WB, IF, IP
	DPAB3970	Anti-IAV H3N2 (A/Wyoming/3/03) HA Pab	Rabbit	ELISA, IP
H3N2	CABT-CS786	Anti-IAV H3N2 (Influenza A/Wisconsin/67/X-161/05) HA Pab	Rabbit	WB, ELISA
	CABT-CS795	Anti-IAV H3N2 (Influenza A/Wisconsin/2005) HA1 Pab	Rabbit	WB, ELISA
	CABT-CS799	Anti-IAV H3N2 (A/Brisbane/10/2007) M2 Pab	Rabbit	WB, ELISA
	CABT-CS803	Anti-IAV H3N2 (A/pintail duck/ALB/86/1976) M2 Pab	Rabbit	WB, ELISA
	DPAB3968	Anti-IAV H3N2 (A/Brisbane/10/07) HA Pab	Rabbit	ELISA, IP
H4N6	DPAB3962	Anti-IAV H4N6 (A/Environment/Maryland/1101/06) HA Pab	Rabbit	WB, ELISA
	DMABT-H21824	Anti-IAV H5N1 NP Mab [Biotin]	Mouse	IF
H5N1	CABT-CS777	Anti-IAV H5N1 (A/Anhui/1/2005) HA Mab	Mouse	WB, ELISA, IP, IF
	CABT-CS737	Anti-IAV H5N1 (A/chicken/VietNam/NCVD-016/2008) HA1 Mab	Mouse	ELISA
	CABT-CS713	Anti-IAV H5N1 (A/Anhui/1/2005) HA Pab	Rabbit	ELISA

	CABT-CS745	Anti-IAV H5N1 (A/chicken/VietNam/NCVD-016/2008) HA1 Pab	Rabbit	WB, ELISA
	CABT-CS729	Anti-IAV H5N1 (A/Hong Kong/483/1997) HA Pab	Rabbit	WB, ELISA
	CABT-CS719	Anti-IAV H5N1 (A/Hong kong/213/2003) HA Pab	Rabbit	WB, ELISA
	CABT-CS727	Anti-IAV H5N1 (A/Vietnam/1194/2004) HA Pab	Rabbit	WB, ELISA
	DPAB3959	Anti-IAV H5N1 (A/Vietnam/1203/2004) HA Pab	Rabbit	WB, ELISA
	DPAB3960	Anti-IAV H5N1 (A/Vietnam/1203/2004) M1 Pab	Rabbit	WB, ELISA
	CABT-CS807	Anti-IAV H5N1 (A/Vietnam/1203/2004) NA Pab	Rabbit	WB, ELISA
	CABT-CS810	Anti-IAV H5N1 (A/Vietnam/1203/2004) NS1 Pab	Rabbit	WB, ELISA
	CABT-CS740	Anti-IAV H5N1 (A/turkey/Turkey/1/2005) HA Pab	Rabbit	WB, ELISA
	CABT-CS793	Anti-IAV H5N1 (A/Bar-headed Goose/Qinghai/12/05) HA1 Pab	Rabbit	WB, ELISA
	CABT-CS741	Anti-IAV H5N1 (A/Common magpie/Hong Kong/2256/2006) HA Pab	Rabbit	WB, ELISA
	CABT-CS718	Anti-IAV H5N1 (A/Cambodia/R0405050/2007) HA Pab	Rabbit	WB, ELISA
	CABT-CS731	Anti-IAV H5N1 (A/Egypt/NO5056/2009) HA Pab	Rabbit	WB, ELISA
	CABT-CS720	Anti-IAV H5N1 (A/Hubei/1/2010) NA Pab	Rabbit	WB, ELISA
H5N2	CABT-CS710	Anti-IAV H5N2 (A/American green-winged teal/California/HKWF609/07) HA Pab	Rabbit	WB, ELISA
H5N3	CABT-CS708	Anti-IAV H5N3 (A/duck/Hokkaido/167/2007) HA Pab	Rabbit	WB, ELISA
H5N8	CABT-CS711	Anti-IAV H5N8 (A/duck/NY/191255-59/2002) HA Pab	Rabbit	WB, ELISA
H6N2	DPAB3956	Anti-IAV H6N2 (A/duck/Hainan/6/2004) HA Pab	Rabbit	WB, ELISA
H7N1	CABT-CS764	Anti-IAV H7N1 (A/FPV/Rostock/1934) HA Mab	Mouse	WB, ELISA
H7N2	DPAB3957	Anti-IAV H7N2 (A/chicken/MD/MINHMA/2004) HA Pab	Rabbit	WB, ELISA
H7N7	CABT-CS778	Anti-IAV H7N7 (A/Chicken/Netherlands/1/03) HA Mab	Mouse	WB, ELISA, IP, IF
	DMAB28208	Anti-IAV H7N7 (A/chicken/Netherlands/1/03) NA Mab	Mouse	ELISA, IP, IF
	CABT-RM295	Anti-IAV H7N7 (A/Netherlands/219/03) HA Mab	Mouse	WB, ELISA
	DPAB3966	Anti-IAV H7N7 (A/Chicken/Netherlands/1/03) NA Pab	Rabbit	WB, ELISA
H7N9	CABT-CS179	Anti-IAV H7N9 (A/Shanghai/1/2013) HA Pab	Rabbit	WB, ELISA
	CABT-CS788	Anti-IAV H7N9 (A/Shanghai/2/2013) HA Pab	Rabbit	ELISA, IP
	CABT-CS802	Anti-IAV H7N9 (A/northern shoveler/Mississippi/11OS145/2011) M2 Pab	Rabbit	WB, ELISA
H9N2	CABT-B8413	Anti-IAV H9N2 (A/Hong Kong/1073/99) NA Mab	Mouse	ELISA
	CABT-CS781	Anti-IAV H9N2 (A/Hong Kong/33982/2009) HA Mab	Mouse	ELISA, WB, IF, IP
	CABT-CS210	Anti-IAV H9N2 (T/W/66) Pab	Chicken	ID, HI, IB

	CABT-B8414	Anti-IAV H9N2 (A/Hong Kong/1073/99) NA Pab	Rabbit	ELISA
	DPAB3958	Anti-IAV H9N2 (A/chicken/HongKong/NT366/03) HA Pab	Rabbit	WB, ELISA
	CABT-CS805	Anti-IAV H9N2 (A/Chicken/HongKong/NT366/03) NA Pab	Rabbit	WB, ELISA
	CABT-CS801	Anti-IAV H9N2 (A/chicken/Korea/GH2/2007) M2 Pab	Rabbit	WB, ELISA
H10N3	CABT-CS682	Anti-IAV H10N3 (A/duck/Hong Kong/786/1979) HA Pab	Rabbit	WB, ELISA, HI
H14N5	DPAB3963	Anti-IAV H14N5 (A/mallard/Gurjev/263/1982) HA Pab	Rabbit	WB
H15N8	DPAB3964	Anti-IAV H15N8(A/Australia/83/2000) HA Pab	Rabbit	WB
H12N5	DPAB3961	Anti-IAV H12N5 (A/pintail/Alaska/102/05) HA Pab	Rabbit	WB, ELISA
IBV	DMAB3814	Anti-IBV HA2 Mab	Mouse	ELISA, WB
	DMAB3815	Anti-IBV HA2 Mab	Mouse	ELISA, WB
	CABT-RM296	Anti-IBV M1 Mab	Mouse	ELISA, WB
	DPBT-66890GI	Anti-IBV Pab	Goat	IHC, ELISA, IF, WB
	DPBT-66889GI	Anti-IBV Pab [HRP]	Goat	IHC, ELISA, IF, WB
	DPAB0197	Anti-IBV Pab [Biotin]	Goat	ELISA, IF, WB
	DPAB0198	Anti-IBV Pab [FITC]	Goat	ELISA, IF, WB
	DPAB4264	Anti-IBV HA Pab	Rabbit	ELISA, WB
	CABT-CS790	Anti-IBV (B/Malaysia/2506/2004) HA Pab	Rabbit	WB, ELISA
	DPAB3967	Anti-IBV (B/Malaysia/2506/2004) NP Pab	Rabbit	ELISA, WB
	CABT-CS796	Anti-IBV (B/Brisbane/60/2008) HA2 Pab	Rabbit	WB, ELISA
	DPATB-H83571	Anti-IBV Glycoprotein NB Pab	Rabbit	IHC-P, WB, ELISA

Subtype	Cat. No.	Strain	Target	Expression System
---------	----------	--------	--------	-------------------

Recombinant antigens

H1N1	DAG2243	A/Albany/12/1951	HA1	HEK293 Cells
	DAG2179	A/Beijing/01/2009	HA	HEK293 Cells
	DAG-H10111	A/Beijing/22808/2009	HA1	HEK293 Cells
	DAG2180	A/Beijing/22808/2009	HA	HEK293 Cells
	DAG2244	A/Bel/1942	HA1	HEK293 Cells
	DAG-H10080	A/Brevig Mission/1/1918	HA	HEK293 Cells
	DAG-H10086	A/Brevig Mission/1/1918	HA1	HEK293 Cells
	DAG-H10119	A/Brevig Mission/1/1918	NP	Insect Cells
	DAG-H10114	A/Brevig Mission/1/1918	M1	E. coli
	DAGC632	A/Brisbane/02/2018	HA	HEK293 Cells
	DAGC275	A/Brisbane/02/2018	HA1	HEK293 Cells
	DAGC633	A/Brisbane/02/2018	NA	Insect Cells

DAGC634	A/Brisbane/02/2018	NP	Insect Cells
DAG2328	A/Brisbane/10/2007	NP	E. coli
DAG2202	A/Brisbane/59/2007	HA1	HEK293 Cells
DAG1688	A/Brisbane/59/2007	HA	HEK293 Cells
DAG-H10082	A/California/04/2009	HA1	HEK293 Cells
DAG-H10083	A/California/04/2009	HA ECD	Insect Cells
DAG-H10078	A/California/04/2009	HA ECD	HEK293 Cells
DAG-H10081	A/California/04/2009	HA (mutated)	HEK293 Cells
DAG-H10088	A/California/04/2009	NA	HEK293 Cells
DAG-H10113	A/California/04/2009	NA	HEK293 Cells
DAG-H10106	A/California/04/2009	NA	HEK293 Cells
DAG-H10079	A/California/04/2009	NA	HEK293 Cells
DAG-H10110	A/California/04/2009	NA	Insect Cells
DAG2336	A/California/04/2009	NS1	E. coli
DAG2337	A/California/04/2009	NS1	HEK293 Cells
DAG2306	A/California/04/2009	M1	E. coli
DAG2324	A/California/06/2009	NP	E. coli
DAG2207	A/California/06/2009	HA	HEK293 Cells
DAG2247	A/California/06/2009	HA1	HEK293 Cells
DAG2181	A/California/07/2009	HA	HEK293 Cells
DAG4439	A/California/07/2009	HA	Insect Cells
DAGC646	A/California/07/2009	NP	Insect Cells
DAG-H10100	A/England/195/2009	HA	HEK293 Cells
DAG-H10101	A/England/195/2009	HA1	HEK293 Cells
DAGC621	A/Guangdong-Maonan/SWL11536/2019	HA	HEK293 Cells
DAGC622	A/Guangdong-Maonan/SWL11536/2019	NP	Insect Cells
DAG2184	A/Hawaii/19/2007	HA	HEK293 Cells
DAGC630	A/Hawaii/70/2019	NP	Insect Cells
DAG2256	A/Memphis/1/1987	HA1	HEK293 Cells
DAG2203	A/Mexico/InDRE4114/2009	HA	HEK293 Cells
DAGA-3986	A/Michigan/45/2015	HA	HEK293 Cells
DAGA-3987	A/Michigan/45/2015	HA1	HEK293 Cells
DAGC638	A/Michigan/45/2015	NA	Insect Cells
DAGC639	A/Michigan/45/2015	NP	Insect Cells
DAG1604	A/New Caledonia/20/1999	HA	Insect Cells

	DAG2221	A/New Caledonia/20/1999	HA	HEK293 Cells
	DAG2280	A/New Caledonia/20/1999	HA1	HEK293 Cells
	DAG2187	A/New York/06/2009	HA	HEK293 Cells
	DAG-H10104	A/New York/18/2009	HA	HEK293 Cells
	DAG-H10105	A/New York/18/2009	HA1	HEK293 Cells
	DAG2188	A/New York/6868/2009	HA	HEK293 Cells
	DAG2212	A/Ohio/01/2007	HA	HEK293 Cells
	DAG-H10099	A/Ohio/07/2009	HA	HEK293 Cells
	DAG-H10115	A/Ohio/07/2009	HA1	HEK293 Cells
	DAG-H10091	A/Ohio/UR06-0091/2007	HA1	HEK293 Cells
	DAG-H10096	A/Ohio/UR06-0091/2007	HA	HEK293 Cells
	DAG2260	A/Phila/1935	HA1	HEK293 Cells
	DAG-H10090	A/Puerto Rico/8/1934	HA1	HEK293 Cells
	DAG-H10094	A/Puerto Rico/8/1934	HA	HEK293 Cells
	DAG-H10087	A/Puerto Rico/8/1934/Mount Sinai	NP	Insect Cells
	DAG-H10108	A/Puerto Rico/8/1934/Mount Sinai	NS2	E. coli
	DAG-H10107	A/Puerto Rico/8/1934/Mount Sinai	NS1	E. coli
	DAG-H10109	A/Puerto Rico/8/1934/Mount Sinai	M1	E. coli
	DAG1605	A/Solomon Islands/3/2006	HA	Insect Cells
	DAG1687	A/Solomon Islands/3/2006	HA	HEK293 Cells
	DAG1774	A/Solomon Islands/3/2006	HA1	HEK293 Cells
	DAG1689	A/South Carolina/1/2018	HA1	HEK293 Cells
	DAG2213	A/South Carolina/1/2018	HA	HEK293 Cells
	DAG2189	A/Texas/05/2009	HA	HEK293 Cells
	DAG-H10103	A/Texas/05/2009	HA1	HEK293 Cells
	DAG-H10118	A/USSR/90/1977	HA	Insect Cells
	DAG-H10116	A/USSR/90/1977	NA	HEK293 Cells
	DAG2265	A/USSR/92/1977	HA	HEK293 Cells
	DAG-WT1001	A/Victoria/2570/2019 pdm09-like virus	HA	HEK293 Cells
	DAGC609	A/Wisconsin/588/2019	NA	Insect Cells
	DAGC610	A/Wisconsin/588/2019	NP	Insect Cells
	DAG-WT829	A/Wisconsin/588/2019	HA	HEK293 Cells
	DAG-H10092	A/WSN/1933	HA1	HEK293 Cells
	DAG-H10093	A/WSN/1933	HA	HEK293 Cells
H2N2	DAG-H10127	A/Ann Arbor/6/1960	NP	Insect Cells

	DAG2238	A/Canada/720/2005	HA1	HEK293 Cells
	DAG2223	A/Canada/720/2005	HA	HEK293 Cells
	DAG-H10129	A/Guiyang/1/1957	HA1	HEK293 Cells
	DAG-H10130	A/Guiyang/1/1957	HA	HEK293 Cells
	DAG-H10128	A/Japan/305/1957	HA1	HEK293 Cells
	DAG2211	A/Japan/305/1957	HA	HEK293 Cells
H3N2	DAG-H10134	A/Aichi/2/1968	HA1	HEK293 Cells
	DAG2205	A/Aichi/2/1968	HA	HEK293 Cells
	DAG-H10148	A/Aichi/2/1968	M1	E. coli
	DAG-H10150	A/Aichi/2/1968	NA	HEK293 Cells
	DAG-H10149	A/Aichi/2/1968	NP	Insect Cells
	DAG-H10144	A/Babol/36/2005	NA	HEK293 Cells
	DAG-H10140	A/Babol/36/2005 (E119V)	NA	HEK293 Cells
	DAG-H10143	A/Babol/36/2005 (H274Y)	NA	HEK293 Cells
	DAG-H10141	A/Babol/36/2005 (N294S)	NA	HEK293 Cells
	DAG-H10142	A/Babol/36/2005 (R292K)	NA	HEK293 Cells
	DAG-WT828	A/Bangkok/1/1979	HA	HEK293 Cells
	DAG2154	A/Beijing/32/1992	HA	HEK293 Cells
	DAG2282	A/Brisbane/10/2007	HA1	HEK293 Cells
	DAG2224	A/Brisbane/10/2007	HA	HEK293 Cells
	DAG4441	A/Brisbane/10/2007	NA	Insect Cells
	DAG2335	A/Brisbane/10/2007	NS1	E. coli
	DAG2329	A/Brisbane/10/2007	NP	E. coli
	DAG2246	A/Brisbane/299/2011	HA1	HEK293 Cells
	DAG-H10153	A/California/07/2004	HA	Insect Cells
	DAGC617	A/Cambodia/E0826360/2020	HA	HEK293 Cells
	DAGC619	A/Cambodia/E0826360/2020	NA	Insect Cells
	DAGC620	A/Cambodia/E0826360/2020	NP	Insect Cells
	DAG2249	A/Chiang Rai/277/2011	HA1	HEK293 Cells
	DAG2155	A/Christchurch/4/1985	HA	HEK293 Cells
	DAG-WT1000	A/Darwin/9/2021-like virus	HA	HEK293 Cells
	DAG2156	A/England/42/1972	HA	HEK293 Cells
	DAG2157	A/Fujian/411/2002	HA	HEK293 Cells
	DAG2158	A/Guizhou/54/1989	HA	HEK293 Cells
	DAG-H10152	A/Hong Kong/1/1968	HA	Insect Cells

DAG2639	A/Hong Kong/1/1968	NA	Insect Cells
DAG-H10151	A/Hong Kong/1/1968	NP	Insect Cells
DAGC623	A/Hong Kong/2671/2019	HA	HEK293 Cells
DAGC624	A/Hong Kong/2671/2019	NP	Insect Cells
DAGC631	A/Hong Kong/45/2019	NP	Insect Cells
DAGC640	A/Hong Kong/4801/2014	HA	Insect Cells
DAGC641	A/Hong Kong/4801/2014	NA	Insect Cells
DAGC642	A/Hong Kong/4801/2014	NP	Insect Cells
DAG2159	A/Hong Kong/8/1968	HA	HEK293 Cells
DAG2253	A/Iowa/08/2011	HA1	HEK293 Cells
DAG2160	A/Johannesburg/33/1994	HA	HEK293 Cells
DAG2254	A/Kansas/13/2009	HA1	HEK293 Cells
DAGC637	A/Kansas/14/2017	NP	Insect Cells
DAGC635	A/Kansas/14/2017	HA	HEK293 Cells
DAGC636	A/Kansas/14/2017	NA	Insect Cells
DAG2255	A/Kentucky/05/2011	HA1	HEK293 Cells
DAG2257	A/Minnesota/09/2010	HA1	HEK293 Cells
DAG2161	A/Mississippi/1/1985	HA	HEK293 Cells
DAG1610	A/New York/55/2004	HA	Insect Cells
DAG2258	A/Ontario/RV1273/2005	HA1	HEK293 Cells
DAG2162	A/Panama/07/1999	HA	HEK293 Cells
DAG2259	A/Pennsylvania/14/2010	HA1	HEK293 Cells
DAG-H10146	A/Perth/16/2009	HA1	HEK293 Cells
DAG-H10145	A/Perth/16/2009	HA	HEK293 Cells
DAG2569	A/Perth/16/2009	HA1	Insect Cells
DAG2163	A/Philippines/2/1982	HA	HEK293 Cells
DAGA-3990	A/Singapore/INFIMH-16-0019/2016	HA1	HEK293 Cells
DAGA-3989	A/Singapore/INFIMH-16-0019/2016	HA	HEK293 Cells
DAGA-3988	A/Switzerland/8060/2017	HA	HEK293 Cells
DAGC647	A/Switzerland/9715293/2013	HA	Insect Cells
DAGC648	A/Switzerland/9715293/2013	NP	Insect Cells
DAG2164	A/Sydney/5/1997	HA	HEK293 Cells
DAG2165	A/Texas/1/1977	HA	HEK293 Cells
DAG2195	A/Victoria/208/2009	HA	HEK293 Cells
DAG2283	A/Victoria/210/2009	HA1	HEK293 Cells

	DAG2166	A/Victoria/3/1975	HA	HEK293 Cells
	DAG2266	A/Victoria/361/2011	HA1	HEK293 Cells
	DAG2190	A/Victoria/361/2011	HA	HEK293 Cells
	DAG2197	A/Wisconsin/15/2009	HA	HEK293 Cells
	DAG1612	A/Wisconsin/67/2005	HA	Insect Cells
	DAG-H10137	A/Wisconsin/67/X-161/2005	HA	Insect Cells
	DAG2239	A/Wisconsin/67/X-161/2005	HA1	HEK293 Cells
	DAG2167	A/Wuhan/359/1995	HA	HEK293 Cells
	DAG2240	A/Wyoming/3/2003	HA1	HEK293 Cells
	DAG2226	A/Wyoming/3/2003	HA	HEK293 Cells
	DAG1611	A/Wyoming/3/2003	HA	Insect Cells
	DAG2308	A/Wyoming/3/2003	M1	E. coli
	DAG-H10154	A/X-31	HA	HEK293 Cells
H5N1	DAG-H10167	A/Anhui/1/2005	HA1	HEK293 Cells
	DAG-H10215	A/Anhui/1/2005	HA	Insect Cells
	DAG2168	A/Anhui/1/2005	HA (mutated)	HEK293 Cells
	DAG-H10208	A/Anhui/1/2005	NP	HEK293 Cells
	DAG-H10179	A/Anhui/1/2005	NA	HEK293 Cells
	DAG-H10194	A/Cambodia/R0405050/2007	HA1	HEK293 Cells
	DAG-H10193	A/Cambodia/R0405050/2007	HA	HEK293 Cells
	DAG-H10213	A/Cambodia/S1211394/2008	HA1	HEK293 Cells
	DAG-H10214	A/Cambodia/S1211394/2008	HA	HEK293 Cells
	DAG2248	A/Cambodia/V0401301/2011	HA1	HEK293 Cells
	DAG-H10185	A/Egypt/2321-NAMRU3/2007	HA1	HEK293 Cells
	DAG2174	A/Egypt/2321-NAMRU3/2007	HA	HEK293 Cells
	DAG-H10217	A/Egypt/3300-NAMRU3/2008	HA1	HEK293 Cells
	DAG2183	A/Egypt/3300-NAMRU3/2008	HA	HEK293 Cells
	DAG2285	A/Egypt/N03072/2010	HA1	HEK293 Cells
	DAG2198	A/Egypt/N03072/2010	HA	HEK293 Cells
	DAG-H10191	A/Egypt/N05056/2009	HA1	HEK293 Cells
	DAG-H10190	A/Egypt/N05056/2009	HA	HEK293 Cells
	DAG2286	A/Hong Kong/156/1997	HA1	HEK293 Cells
	DAG-H10195	A/Hong Kong/483/1997	HA	HEK293 Cells
DAG2287	A/Hong Kong/483/1997	HA1	HEK293 Cells	
DAG-H10200	A/Hongkong/213/2003	HA1	HEK293 Cells	

	DAG-H10202	A/Hongkong/213/2003	HA	HEK293 Cells
	DAG2288	A/Hubei/1/2010	HA1	HEK293 Cells
	DAG2199	A/Hubei/1/2010	HA	HEK293 Cells
	DAG-H10212	A/Hubei/1/2010	NA	HEK293 Cells
	DAG2210	A/Indonesia/5/2005	HA	HEK293 Cells
	DAG2736	A/Indonesia/5/2005	HA	Insect Cells
	DAG2169	A/Indonesia/5/2005	HA (mutated)	HEK293 Cells
	DAG2320	A/Indonesia/5/2005	NP	HEK293 Cells
	DAG2252	A/Indonesia/NIHRD11771/2011	HA1	HEK293 Cells
	DAG-H10218	A/Thailand/1 (KAN-1)/2004	NA	HEK293 Cells
	DAG2327	A/Thailand/1 (KAN-1)/2004	NP	E. coli
	DAG2307	A/Thailand/1 (KAN-1)/2004	M1	E. coli
	DAG2289	A/Vietnam/1194/2004	HA1	HEK293 Cells
	DAG-H10176	A/Vietnam/1194/2004	HA	HEK293 Cells
	DAG1765	A/Vietnam/1203/2004	HA1	HEK293 Cells
	DAG2170	A/Vietnam/1203/2004	HA	HEK293 Cells
	DAG2292	A/Vietnam/1203/2004	HA2	HEK293 Cells
	DAG1608	A/Vietnam/1203/2004	HA	Insect Cells
	DAG2574	A/Vietnam/HN31242/2007	HA1	Insect Cells
	DAG-H10216	A/Vietnam/UT31413II/2008	HA1	HEK293 Cells
	DAG-H10203	A/Xinjiang/1/2006	HA1	HEK293 Cells
	DAG-H10204	A/Xinjiang/1/2006	HA	HEK293 Cells
H7N7	DAG-H10246	A/Netherlands/219/2003	HA	Insect Cells
	DAG-H10249	A/Netherlands/219/2003	HA1	HEK293 Cells
	DAG2186	A/Netherlands/219/2003	HA	HEK293 Cells
	DAG2232	A/England/268/1996	HA	HEK293 Cells
	DAG-H10250	A/Netherlands/219/2003	NA	HEK293 Cells
	DAG2326	A/Netherlands/219/2003	NP	HEK293 Cells
H7N9	DAG-H10255	A/Anhui/1/2013	HA1	HEK293 Cells
	DAG-H10253	A/Anhui/1/2013	HA	HEK293 Cells
	DAG-H10266	A/Anhui/1/2013	HA	Insect Cells
	DAG-H10271	A/Anhui/1/2013	HA (cleavage)	HEK293 Cells
	DAG-H10263	A/Anhui/1/2013	M1	E. coli
	DAG-H10264	A/Anhui/1/2013	NA	HEK293 Cells
	DAG-H10275	A/Anhui/1-BALF_RG6/2013	NP	Insect Cells

	DAG-H10258	A/Hangzhou/1/2013	HA1	HEK293 Cells
	DAG-H10257	A/Hangzhou/1/2013	HA	HEK293 Cells
	DAG-H10268	A/Hangzhou/1/2013	HA	Insect Cells
	DAG-H10278	A/Hangzhou/3/2013	HA	Insect Cells
	DAG-H10256	A/Shanghai/1/2013	HA1	HEK293 Cells
	DAG-H10273	A/Shanghai/1/2013	HA1	Insect Cells
	DAG-H10267	A/Shanghai/1/2013	HA	Insect Cells
	DAG-H10254	A/Shanghai/1/2013	HA	HEK293 Cells
	DAG-H10272	A/Shanghai/1/2013	HA (cleavage)	HEK293 Cells
	DAG-H10265	A/Shanghai/1/2013	NA	HEK293 Cells
	DAG-H10276	A/Shanghai/2/2013	HA	HEK293 Cells
	DAG-H10277	A/Shanghai/2/2013	HA	Insect Cells
	DAG-H10270	A/Shanghai/2/2013	NP	Insect Cells
	DAG-H10280	A/Shanghai/4664T/2013	HA	Insect Cells
	DAG-H10281	A/Zhejiang/ DTID-ZJU10/2013	HA	HEK293 Cells
	DAG-H10279	A/Zhejiang/1/2013	HA	Insect Cells
H9N2	DAG-H10292	A/Hong Kong/1073/1999	HA1	HEK293 Cells
	DAG2209	A/Hong Kong/1073/1999	HA	HEK293 Cells
	DAG1613	A/Hong Kong/1073/1999	HA	Insect Cells
	DAG-H10291	A/Hong Kong/1073/1999	NA	HEK293 Cells
	DAG2185	A/Hong Kong/2108/2003	HA	HEK293 Cells
	DAG2325	A/Hong Kong/2108/2003	NP	E. coli
	DAG2291	A/Hong Kong/33982/2009	HA1	HEK293 Cells
	DAG2200	A/Hong Kong/33982/2009	HA	HEK293 Cells
	DAG-H10290	A/Hong Kong/35820/2009	HA	Insect Cells
IBV	DAG2267	B/Athens/97/2012	HA1	HEK293 Cells
	DAG-WT1028	B/Austria/1359417/2021 (B/Victoria lineage)-like virus	HA	HEK293 Cells
	DAG-H10320	B/Brisbane/60/2008	HA1	HEK293 Cells
	DAG2215	B/Brisbane/60/2008	HA	HEK293 Cells
	DAG2305	B/Brisbane/60/2008	M1	E. coli
	DAGC644	B/Brisbane/60/2008	NA	HEK293 Cells
	DAG2319	B/Brisbane/60/2008	NP	E. coli
	DAGA-3992	B/Colorado/06/2017	HA1	HEK293 Cells
	DAGA-3991	B/Colorado/06/2017	HA	HEK293 Cells
	DAG-H10315	B/Florida/4/2006	HA1	HEK293 Cells

	DAG2216	B/Florida/4/2006	HA	HEK293 Cells
	DAG-H10319	B/Florida/4/2006	HA2	HEK293 Cells
	DAG2191	B/Harbin/7/1994	HA	HEK293 Cells
	DAG1615	B/Jilin 20/2003	HA	Insect Cells
	DAG1616	B/Malaysia/2506/2004	HA	Insect Cells
	DAG2178	B/Malaysia/2506/2004	HA	HEK293 Cells
	DAG-H10316	B/Malaysia/2506/2004	HA1	HEK293 Cells
	DAG1614	B/Ohio 01/05	HA	Insect Cells
	DAGC614	B/Phuket/3073/2013	HA	Insect Cells
	DAGA-3994	B/Phuket/3073/2013	HA1	HEK293 Cells
	DAGA-3993	B/Phuket/3073/2013	HA	HEK293 Cells
	DAGC615	B/Phuket/3073/2013	NA	Insect Cells
	DAGC616	B/Phuket/3073/2013	NP	Insect Cells
	DAG2268	B/Texas/6/2011	HA1	HEK293 Cells
	DAG2269	B/Utah/02/2012	HA1	HEK293 Cells
	DAG2192	B/Victoria/2/87	HA	HEK293 Cells
	DAGC611	B/Washington/02/2019	HA	HEK293 Cells
	DAGC612	B/Washington/02/2019	NA	Insect Cells
	DAGC613	B/Washington/02/2019	NP	Insect Cells
	DAG2193	B/Wisconsin/01/2010	HA	HEK293 Cells
	DAG2271	B/Wisconsin/01/2012	HA1	HEK293 Cells
	DAG2194	B/Yamagata/16/1988	HA	HEK293 Cells
	DAG2272	B/Yamagata/4/2012	HA1	HEK293 Cells

Inactivated antigens

H1N1	DAG1623	A/Beijing/262/1995	Whole Virus	Egg-derived
	DAG-WT767	A/Brisbane/02/2018, IVR-190	Whole Virus	Egg-derived
	DAG3690	A/New Caledonia/20/1999 IVR	Whole Virus	Egg-derived
	DAG-P2178	A/New Caledonia/20/1999 IVR 116	Whole Virus	Egg-derived
	DAG-WT1026	A/PR/8/1934	Whole Virus	Egg-derived
	DAG2778	A/Solomon Islands/03/2006	Whole Virus	Egg-derived
	DAG1625	A/Taiwan/1/1986	Whole Virus	Egg-derived
H3N2	DAG-WT1027	A X-31, A/Aichi/1968	Whole Virus	Egg-derived
	DAG2710	A/Brisbane/10/2007	Whole Virus	Egg-derived

	DAG-WT768	A/Kansas/14/2017, NYMC X-327	Whole Virus	Egg-derived
	DAG3344	A/Kiev/301/1994	Whole Virus	Egg-derived
	DAGC079	A/NY/55/2004 X PR8 X-157 R-H3	Whole Virus	Egg-derived
	DAG2708	A/Panama/2007/1999	Whole Virus	Egg-derived
	DAG2706	A/Shangdong/9/1993	Whole Virus	Egg-derived
	DAG2780	A/Wisconsin/67/2005	Whole Virus	Egg-derived
	DAGC080	A/Wyoming/03/2003	Whole Virus	Egg-derived
IBV	DAGC482	B/Brisbane/33/2008	Whole Virus	Egg-derived
	DAG1622	B/Florida 04/2006	Whole Virus	Egg-derived
	DAG1621	B/Florida 07/2004	Whole Virus	Egg-derived
	DAG197	B/Hong Kong 5/1972	Whole Virus	Egg-derived
	DAGC081	B/Jiangsu/10/2003	Whole Virus	Egg-derived
	DAG1620	B/Malaysia 2506/2004	Whole Virus	Egg-derived
	DAG-WT769	B/Maryland/15/2016, NYMC BX-69A	Whole Virus	Egg-derived
	DAG1617	B/Qingdao/102/1991	Whole Virus	Egg-derived
	DAG1618	B/Tokio/53/1999	Whole Virus	Egg-derived
	DAG1619	B/Victoria 504/2000	Whole Virus	Egg-derived

Parainfluenza Virus

Human parainfluenza viruses (HPIVs) commonly cause upper and lower respiratory illness. Symptoms of HPIV are not severe enough to cause concern in healthy adults. However, they can be life-threatening to an infant, the elderly, or anyone with a compromised or weakened immune system. Parainfluenza viruses belong to the family *Paramyxoviridae* and are genetically and antigenically divided into four major serotypes, PIV1 to PIV4. Of the PIVs, PIV3 is the most virulent and is associated with significant morbidity and mortality.

Laboratory diagnosis of parainfluenza viruses can be performed by isolation and detection of the virus in cell culture or by detection of viral antigens directly within respiratory tract secretions using immunofluorescence (IFA), enzyme immunoassays (EIA), four-immunoassay or polymerase chain reaction (PCR). Also, analysis of specific IgG antibodies showing a subsequent rise in titer after infection (using paired serum specimens) can demonstrate acute infection. However, individual parainfluenza virus types are known to cross-react, making subtyping difficult. Hemagglutination inhibition tests (HIT), complement fixation (CF) and neutralization tests (NT) can be performed to differentiate the HPIV types by evaluating the specific IgM, IgG and IgA antibody titers. New EIA assays rely on purified viral envelope glycoprotein and nucleocapsid preparations. In differential diagnosis, tests for other paramyxoviruses like mumps, pneumonia, and simian virus type 5 must be performed because of possible cross-reactions.

Ordering Information

Cat. No.	Product Name	Host	Matched Pair
Antibody pairs			
DMAB-CS23145	Anti-PIV1/3 F Protein Mab, Clone PA03	Mouse	DMAB-CS23145-DMAB-CS23146
DMAB-CS23146	Anti-PIV1/3 F Protein Mab, Clone PA04	Mouse	
CABT-CS194	Anti-PIV3 Mab, Clone IN292	Mouse	CABT-CS194 - CABT-CS195
CABT-CS195	Anti-PIV3 Mab, Clone IN293	Mouse	

Cat. No.	Product Name	Host	Application
Other antibodies			
CABT-NS1520	Anti-PIV1 Mab, Clone MN337	Mouse	ELISA, IF
DMABT-51482MP	Anti-PIV3 Mab, Clone 2367 (C276)	Mouse	ELISA, IF, IHC
DMABT-51483MP	Anti-PIV3 Mab, Clone 2369 (32G8)	Mouse	ELISA
CABT-BL8951	Anti-PIV3 p69 Mab, Clone 58j3	Mouse	Neut, IFA, HI
CABT-BL8952	Anti-PIV3 p69 Mab, Clone 58j4	Mouse	Neut, IFA, HI
CABT-CS036	Anti-PIV3 F Protein Mab, Clone 10-5-4	Mouse	IF
DPAB31509	Anti-PIV1 Pab	Goat	ELISA, WB, IF
DPAB0162	Anti-PIV2/3 Pab	Goat	ICC, ELISA
CABT-BL8953	Anti-PIV3 p69 Pab	Goat	IF
DPAB-CS24038A	Anti-PIV IgA Control Serum	Human	Immunoassay
DPAB-CS24038G	Anti-PIV IgG Control Serum	Human	Immunoassay

Antigens

DAGA-564	Native Parainfluenza Virus Type 1 (Strain Sendai)	MDCK Cells	ELISA
DAGA-510	Native Parainfluenza Virus Type 2 (Strain Greer)	Vero Cells	ELISA
DAGA-508	Native Parainfluenza Virus Type 3 (Strain C243)	Vero Cells	ELISA

Metapneumovirus

Human metapneumovirus (HMPV), a paramyxovirus identified in 2001, is a leading cause of respiratory tract infections in both children and adults. Clinical signs of infection range from mild upper respiratory illness to more severe lower respiratory illness, including bronchiolitis and pneumonia. Human Metapneumovirus (HMPV) is an enveloped, negative single-stranded RNA virus of the genus *Metapneumovirus*, in the family *Pneumoviridae*. Genomic analysis has shown that HMPV exists as two genotypes, A and B, which are further divided into subgroups A1, A2 and B1, B2. Each of these subgroups has a distinct geographical distribution but may circulate separately or simultaneously.

Diagnosis of HMPV infection is commonly performed using molecular and serological techniques. Rapid immunological diagnosis of conventional respiratory virus infections is currently performed in many centers by direct fluorescent antibody (DFA) staining of respiratory cells present in nasopharyngeal aspirate (NPA) samples using virus-specific monoclonal antibodies (MAbs).

Ordering Information

Cat. No.	Product Name	Host	Matched Pair
Antibody pairs			
DMAB-CS23171	Anti-hMPV Mab, Clone B6203	Mouse	DMAB-CS23171 - DMAB-CS23172
DMAB-CS23172	Anti-hMPV Mab, Clone B6202	Mouse	
CABT-L43MM	Anti-hMPV M Protein Mab, Clone IN154	Mouse	CABT-L43MM - CABT-L44MM
CABT-L44MM	Anti-hMPV M Protein Mab, Clone IN155	Mouse	

Cat. No.	Product Name	Host	Application
Other antibodies			
DCABY-524	Anti-hMPV Mab, Clone INQW68	Mouse	IF
CABT-B8771	Anti-hMPV F Protein Mab	Mouse	IF
DMAB8919	Anti-hMPV F Protein Mab, Clone Dpw6F6	Mouse	ELISA, ICC
CABT-B241	Anti-hMPV Glycoprotein Mab, Clone 26F519	Mouse	WB, IF
DCABY-523	Anti-hMPV Nucleoprotein Mab, Clone INQW234	Mouse	IF
DCABY-525	Anti-hMPV Phosphoprotein Mab, Clone INQW44	Mouse	IF

Antigens

DAG-WT616	Recombinant hMPV Fusion Protein	Mammalian Cells	WB, ELISA
DAG-WT617	Recombinant hMPV Nucleoprotein	E. coli	WB, ELISA
DAG-WT646	Recombinant hMPV Matrix Protein	E. coli	WB, ELISA

Human Coronavirus

Coronaviruses are positive-sense, single-stranded RNA viruses. Seven types of coronaviruses are known to infect humans. Patients infected with these viruses develop respiratory symptoms of various severity. HCoV-229E and HCoV-OC43, the two coronaviruses discovered in early years, cause common cold. The other five coronaviruses: HCoV-NL63, HCoV-HKU1, SARS-CoV, MERS, and SARS-CoV-2, lead to more severe respiratory tract infections that can be fatal.

All coronaviruses have very similar structures. The viral genome encodes several proteins with unique functions, including spike protein, N protein, HE protein, papain-like proteases, and M protein. The two antigens of main pharmaceutical interest are the S (spike) protein and the N protein. The N (nucleocapsid) protein is often conserved and can be used as a diagnostic marker. The spike protein is mainly responsible for receptor binding and is a common target for vaccines and antibodies. Different viruses may utilize different surface receptors for binding.

Ordering Information

Cat. No.	Product Name	Host	Application
229E antibody			
CABT-Z820R	Anti-HCoV-229E S1 Pab	Rabbit	WB, ELISA
229E antigens			
DAGC134	Recombinant HCoV-229E S Protein [His]	Insect Cells	SDS-PAGE

DAGC136	Recombinant HCoV-229E N Protein [His]	E. coli	SDS-PAGE
DAGC487	Inactivated HCoV-229E Lysate	MRC-5 Cells	WB, Dot, Immunoassay
NL63 antibodies			
CABT-CS747	Anti-HCoV-NL63 S Mab, Clone 34	Mouse	WB, ELISA
CABT-CS748	Anti-HCoV-NL63 S Mab, Clone 721	Rabbit	ELISA
CABT-Z962R	Anti-HCoV-NL63 S1 Pab	Rabbit	ELISA
CABT-CS749	Anti-HCoV-NL63 NP Pab	Rabbit	WB, ELISA
NL63 antigens			
DAGC250	Recombinant HCoV-NL63 S (S1+S2) [His]	HEK293 Cells	SDS-PAGE, ELISA
DAGC133	Recombinant HCoV-NL63 S Protein [His]	Insect Cells	SDS-PAGE
DAGC485	Inactivated HCoV-NL63 Lysate	Vero Cells	WB, Dot, Immunoassay
OC43 antibodies			
CABT-B342	Anti-HCoV-OC43 Mab, Clone 4615	Mouse	ELISA
CABT-B343	Anti-HCoV OC43 Mab, Clone 4616	Mouse	ELISA
CABT-CS025	Anti-HCoV-OC43 NP Mab, Clone 6538E	Mouse	IF
CABT-CS063	Anti-HCoV-OC43 S Pab	Rabbit	WB, ELISA
CABT-CS882	Anti-HCoV-OC43 NP Pab	Rabbit	WB, ELISA
OC43 antigen			
DAGC131	Recombinant HCoV-OC43 S Protein [His]	Insect Cells	SDS-PAGE
HKU1 antibodies			
CABT-CS868	Anti-HCoV-HKU1 S RBD Mab, Clone 2156	Mouse	ICC
CABT-RM315	Anti-HCoV-HKU1 S Mab, Clone 18	Mouse	ELISA, IHC-P, FC, IF, IP
CABT-RM316	Anti-HCoV-HKU1 S Mab, Clone 139	Rabbit	ELISA
CABT-RM317	Anti-HCoV-HKU1 S Pab	Rabbit	WB, ELISA
HKU1 antigen			
DAGC132	Recombinant HCoV-HKU1 S Protein [His]	HEK293 Cells	SDS-PAGE
MERS-CoV antibodies			
CABT-RM313	Anti-MERS-CoV S1 Mab, Clone MN2163	Mouse	ELISA, IFA
CABT-B1958	Anti-MERS-CoV S (a.a. 726-1296) Mab, Clone 13	Mouse	ELISA
CABT-B1959	Anti-MERS-CoV S (a.a. 1-1297) Mab, Clone 834	Rabbit	Neut
CABT-B1961	Anti-MERS-CoV NP Mab, Clone 21	Mouse	WB, ELISA
CABT-RM311	Anti-MERS & SARS-CoV & SARS-CoV-2 NP Mab, Clone MN2167	Mouse	ELISA, IFA
CABT-RM312	Anti-MERS & SARS-CoV & SARS-CoV-2 NP Mab, Clone MN2168	Mouse	ELISA, IFA
CABT-B1951	Anti-MERS-CoV S (a.a. 1-1297) Pab	Rabbit	ELISA

CABT-B1953	Anti-MERS-CoV S1 (Center region) Pab	Rabbit	WB
CABT-B1954	Anti-MERS-CoV S1 (N-terminal) Pab	Rabbit	WB
CABT-B1952	Anti-MERS-CoV S2 Pab	Rabbit	WB, ELISA
CABT-B1960	Anti-MERS-CoV S1 (a.a. 1-725) Pab	Rabbit	WB, ELISA
CABT-B1965	Anti-MERS-CoV NP Pab	Rabbit	WB, ELISA
CABT-B1964	Anti-MERS-CoV NP (Center region) Pab	Rabbit	WB

MERS-CoV antigens

DAG-H10300	Recombinant MERS-CoV S Protein (a.a. 1-1297) [His]	Insect Cells	ELISA
DAGB201	Recombinant MERS-CoV S Protein (a.a. 367-606) [His]	Insect Cells	ELISA
DAG-H10297	Recombinant MERS-CoV S Protein (a.a. 383-502) [Fc]	Insect Cells	ELISA
DAGA-3103	Recombinant MERS-CoV S Protein (a.a.18-725) [His]	HEK293 Cells	ELISA
DAG-H10298	Recombinant MERS-CoV S1 (a.a. 1-725) [His]	Human Cells	ELISA
DAG-H10296	Recombinant MERS-CoV S2 (a.a. 726-1296) [His]	Insect Cells	N/A
DAG-H10295	Recombinant MERS-CoV N Protein (a.a. 1-413) [His]	Insect Cells	N/A

SARS-CoV antibodies

DMAB8869	Anti-SARS-CoV NP Mab, Clone W152K152	Mouse	WB
CABT-B8748	Anti-SARS-CoV NP Mab, Clone CEJ297	Mouse	ELISA
CABT-B8749	Anti-SARS-CoV NP Mab, Clone CEJ610	Mouse	ELISA
CABT-RM319	Anti-SARS-CoV S1 Pab	Rabbit	WB, ELISA
DPAB1469	Anti-SARS-CoV S (C-Terminal) Pab	Rabbit	ELISA
DPAB1462	Anti-SARS-CoV S (N-terminal) Pab	Rabbit	ELISA
DPAB22549	Anti-SARS-CoV NP Pab	Rabbit	IF, WB, ELISA

SARS-CoV antigens

DAG2408	Recombinant SARS S Protein (a.a. 1 - 1190) [His]	HEK293 Cells	WB, ELISA
DAGA-609	Recombinant SARS S Protein (C-terminal)	E. coli	WB, ELISA
DAGA-610	Recombinant SARS S Protein (N-terminal)	E. coli	WB, ELISA
DAG534	Recombinant SARS S Protein (Middle) [GST]	E. coli	WB, ELISA
DAG-H10342	Recombinant SARS S1 Protein [His]	Insect Cells	WB, ELISA
DAG-H10344	Recombinant SARS RBD Protein [Fc]	Insect Cells	WB, ELISA
DAG517	Recombinant SARS N Protein (a.a. 1 - 49) [GST]	E. coli	WB, ELISA
DAG522	Recombinant SARS N Protein (a.a. 340 - 390) [GST]	E. coli	WB, ELISA
DAG1351	Recombinant SARS N Protein (a.a. 1 - 422) [His]	E. coli	WB
DAGA-606	Recombinant SARS N Protein (a.a. 1-49, 192-220)	E. coli	WB, ELISA
DAGA-607	Recombinant SARS E Protein	E. coli	WB, ELISA
DAGA-608	Recombinant SARS M Protein	E. coli	WB, ELISA

Cat. No.	Product Name	Host	Matched Pair
SARS-CoV-2 antibody pairs			
CABT-CS031	Anti-SARS-CoV-2 S1 Mab, Clone BIB112	Humanized	CABT-CS031 - CABT-CS033
CABT-CS033	Anti-SARS-CoV-2 S1 Mab, Clone BIB114	Humanized	
CABT-CS049	Anti-SARS-CoV-2 S Chimeric Mab, Clone E113	Chimeric	CABT-CS049 - CABT-CS050
CABT-CS050	Anti-SARS-CoV-2 S Chimeric Mab, Clone E114	Chimeric	
CABT-CS141	Anti-SARS-CoV-2 Trimeric S1 Mab, Clone C4587N	Mouse	CABT-CS141 - CABT-CS142
CABT-CS142	Anti-SARS-CoV-2 Trimeric S1 Mab, Clone C4589N	Mouse	
CABT-CS037	Anti-SARS-CoV-2 NP Mab, Clone CO10	Humanized	CABT-CS037 - CABT-RM320
CABT-RM320	Anti-SARS-CoV-2 NP Mab, Clone 120	Rabbit	
CABT-CS075	Anti-SARS-CoV-2 NP Mab, Clone 0659	Mouse	CABT-CS075 - CABT-CS076
CABT-CS076	Anti-SARS-CoV-2 NP Mab, Clone 0658	Mouse	
CABT-RMJ1	Anti-SARS-CoV-2 NP Mab, Clone NJ1	Rabbit	CABT-MMB1 - CABT-RMJ1 CABT-MMB2 - CABT-RMJ1
CABT-MMB1	Anti-SARS-CoV-2 NP Mab, Clone NB1	Mouse	
CABT-MMB2	Anti-SARS-CoV-2 NP Mab, Clone NB2	Mouse	
Cat. No.	Product Name	Host	Application
SARS-CoV-2 neutralizing antibodies			
CABT-CS064	Anti-SARS-CoV-2 Spike Neutralizing Mab, Clone NN54	Mouse	ELISA, Neut
CABT-CS065	Anti-SARS-CoV-2 Spike Neutralizing Mab, Clone NN68	Mouse	ELISA, Neut
CABT-CS079	Anti-SARS-CoV-2 Spike RBD Neutralizing Mab, Clone 112	Rabbit	ELISA, WB, Neut
CABT-CS033	Anti-SARS-CoV-2 S1 Mab, Clone BIB114	Humanized	ELISA, Neut
CABT-CS056	Anti-SARS-CoV-2 S1 Pab	Rabbit	ELISA, Neut
CABT-CS057	Anti-SARS-CoV-2 S1 Pab	Monkey	ELISA, Neut
Other SARS-CoV-2 antibodies			
CABT-CS044	Anti-SARS-CoV-2 RBD Mab (purified), Clone BIB116	Humanized	ELISA
CABT-CS062	Anti-SARS-CoV-2 RBD Mab (unpurified), Clone CTN12	Humanized	ELISA
CABT-CS088	Anti-SARS-CoV-2 RBD Mab, Clone 31Z51	Humanized	ELISA, LFIA
CABT-CS052	Anti-SARS-CoV-2 S1 MAb, Clone CT13	Humanized	ELISA
CABT-CS053	Anti-SARS-CoV-2 S1 MAb, Clone CT14	Humanized	ELISA
CABT-CS032	Anti-SARS-CoV-2 Spike RBD MAb, Clone BIB113	Humanized	WB, ELISA
CABT-CS034	Anti-SARS-CoV-2 Spike RBD MAb, Clone BIB115	Humanized	WB, ELISA
CABT-CS060	Anti-SARS-CoV-2 S-RBD MAb (purified), Clone CTN12	Humanized	ELISA, LFIA
CABT-CS035	Anti-SARS-CoV-2 Spike RBD MAb, Clone 211184	Mouse	WB, ELISA
CABT-RM321	Anti-SARS-CoV-2 Spike Glycoprotein MAb, Clone 118	Rabbit	ELISA

CABT-CS054	Anti-SARS-CoV-2 S2 MAb, Clone HM3128	Humanized	WB, ELISA
CABT-CS080	Anti-SARS-CoV-2 S2 MAb, Clone 2B0	Mouse	WB, ELISA, IHC-P, ICC/IF, IP, FACS
CABT-CS084	Anti-SARS-CoV-2 Spike NTD MAb, Clone 3257	Humanized	ELISA, IHC
CABT-CS061	Anti-SARS-CoV-2 NP Mab (purified), Clone CON12	Humanized	ELISA
CABT-CS055	Anti-SARS-CoV-2 NP Mab (unpurified), Clone CON12	Humanized	ELISA
CABT-CS051	Anti-SARS-CoV-2 NP MAb, Clone TMOPO	Humanized	ELISA
CABT-CS026	Anti-SARS-CoV-2 NP MAb, Clone 7G21	Mouse	WB, ELISA, IHC
CABT-CS027	Anti-SARS-CoV-2 NP MAb, Clone 4B21	Mouse	ELISA
CABT-CS067	Anti-SARS-CoV-2 N+S-RBD Mab (cocktail), Clone COTHN12	Humanized	ELISA
CABT-CS066	Anti-SARS-CoV-2 Spike PAb	Rabbit	WB, ELISA
CABT-CS048	Anti-SARS-CoV-2 S2 PAb	Rabbit	WB, ELISA
CABT-CS024	Anti-SARS-CoV-2 NP PAb	Rabbit	WB, ELISA
CABT-CS068	Anti-SARS-CoV-2 ORF8 PAb	Rabbit	ELISA
CABT-CS069	Anti-SARS-CoV-2 ORF3a PAb	Rabbit	ELISA
CABT-CS070	Anti-SARS-CoV-2 ORF7a PAb	Rabbit	ELISA
CABT-CS071	Anti-SARS-CoV-2 ORF6 PAb	Rabbit	ELISA
CABT-CS072	Anti-SARS-CoV-2 ORF10 PAb	Rabbit	ELISA
CABT-CS073	Anti-SARS-CoV-2 pplab PAb	Rabbit	ELISA

SARS-CoV-2 mutant antigens

DAGC212	Recombinant SARS-CoV-2 S (R683A, R685A) Active Trimer (MALS verified) [His]	HEK293 Cells	SDS-PAGE, ELISA
DAGC213	Recombinant SARS-CoV-2 S (R683A, R685A) [His]	HEK293 Cells	SDS-PAGE, ELISA
DAGC358	Recombinant SARS-CoV-2 S (S1+S2 ECD) Protein (S577A) [His]	HEK293 Cells	SDS-PAGE, ELISA
DAGC360	Recombinant SARS-CoV-2 S (S1+S2 ECD) (R683A, R685A, F817P, A892P, A899P, A942P, K986P, V987P) [His]	HEK293 Cells	SDS-PAGE, ELISA
DAGC359	Recombinant SARS-CoV-2 S1(D614G) [hFc]	HEK293 Cells	SDS-PAGE, ELISA
DAGC210	Recombinant SARS-CoV-2 S1(D614G) Protein [His]	HEK293 Cells	SDS-PAGE, ELISA
DAGC238	Recombinant SARS-CoV-2 RBD Protein (V367F) [mFc]	HEK293 Cells	SDS-PAGE, ELISA
DAGC239	Recombinant SARS-CoV-2 RBD Protein (G476S) [His]	HEK293 Cells	SDS-PAGE, ELISA
DAGC186	Recombinant SARS-CoV-2 RBD (V367F) [His]	HEK293 Cells	SDS-PAGE, ELISA
DAGC187	Recombinant SARS-CoV-2 RBD (K458R) [His]	HEK293 Cells	SDS-PAGE, ELISA
DAGC188	Recombinant SARS-CoV-2 RBD (F342L) [His]	HEK293 Cells	SDS-PAGE, ELISA
DAGC189	Recombinant SARS-CoV-2 RBD (V483A) [His]	HEK293 Cells	SDS-PAGE, ELISA
DAGC190	Recombinant SARS-CoV-2 RBD (A435S) [His]	HEK293 Cells	SDS-PAGE, ELISA
DAGC191	Recombinant SARS-CoV-2 RBD (N354D) [His]	HEK293 Cells	SDS-PAGE, ELISA

DAGC217	Recombinant SARS-CoV-2 RBD (N354D, D364Y) [His]	HEK293 Cells	SDS-PAGE, ELISA
DAGC218	Recombinant SARS-CoV-2 RBD (R408I) [His]	HEK293 Cells	SDS-PAGE, ELISA
DAGC219	Recombinant SARS-CoV-2 RBD (W436R) [His]	HEK293 Cells	SDS-PAGE, ELISA
DAGC361	Recombinant SARS-CoV-2 RBD (V341I) [His]	HEK293 Cells	SDS-PAGE, ELISA
DAGC362	Recombinant SARS-CoV-2 RBD (Y508H) [His]	HEK293 Cells	SDS-PAGE, ELISA
DAGC363	Recombinant SARS-CoV-2 RBD (N439K) [His]	HEK293 Cells	SDS-PAGE, ELISA
DAGC364	Recombinant SARS-CoV-2 RBD (V503F) [His]	HEK293 Cells	SDS-PAGE, ELISA
DAGC365	Recombinant SARS-CoV-2 RBD (A522V) [His]	HEK293 Cells	SDS-PAGE, ELISA
DAGC366	Recombinant SARS-CoV-2 RBD (S494P) [His]	HEK293 Cells	SDS-PAGE, ELISA
DAGC367	Recombinant SARS-CoV-2 RBD (A372S) [His]	HEK293 Cells	SDS-PAGE, ELISA
DAGC368	Recombinant SARS-CoV-2 RBD (A520S) [His]	HEK293 Cells	SDS-PAGE, ELISA
DAGC369	Recombinant SARS-CoV-2 RBD (A522S) [His]	HEK293 Cells	SDS-PAGE, ELISA
DAGC370	Recombinant SARS-CoV-2 RBD (D405V, Q414A) [His]	HEK293 Cells	SDS-PAGE, ELISA
DAGC371	Recombinant SARS-CoV-2 RBD (Q414E) [His]	HEK293 Cells	SDS-PAGE, ELISA
DAGC372	Recombinant SARS-CoV-2 RBD (P384L) [His]	HEK293 Cells	SDS-PAGE, ELISA
DAGC373	Recombinant SARS-CoV-2 RBD (A348S) [His]	HEK293 Cells	SDS-PAGE, ELISA
DAGC374	Recombinant SARS-CoV-2 RBD (F338L) [His]	HEK293 Cells	SDS-PAGE, ELISA
DAGC375	Recombinant SARS-CoV-2 RBD (F377L) [His]	HEK293 Cells	SDS-PAGE, ELISA
DAGC376	Recombinant SARS-CoV-2 RBD (L452R) [His]	HEK293 Cells	SDS-PAGE, ELISA
DAGC377	Recombinant SARS-CoV-2 RBD (P521S) [His]	HEK293 Cells	SDS-PAGE, ELISA
DAGC378	Recombinant SARS-CoV-2 RBD (T478I) [His]	HEK293 Cells	SDS-PAGE, ELISA
DAGC379	Recombinant SARS-CoV-2 RBD (V483I) [His]	HEK293 Cells	SDS-PAGE, ELISA
DAGC380	Recombinant SARS-CoV-2 RBD (S359N) [His]	HEK293 Cells	SDS-PAGE, ELISA
DAGC381	Recombinant SARS-CoV-2 RBD (K378R) [His]	HEK293 Cells	SDS-PAGE, ELISA
DAGC382	Recombinant SARS-CoV-2 RBD (Q409E) [His]	HEK293 Cells	SDS-PAGE, ELISA
DAGC383	Recombinant SARS-CoV-2 RBD (I472V) [His]	HEK293 Cells	SDS-PAGE, ELISA
DAGC384	Recombinant SARS-CoV-2 RBD (A372T) [His]	HEK293 Cells	SDS-PAGE, ELISA
DAGC385	Recombinant SARS-CoV-2 RBD (A344S) [His]	HEK293 Cells	SDS-PAGE, ELISA
DAGC386	Recombinant SARS-CoV-2 RBD (A520V) [His]	HEK293 Cells	SDS-PAGE, ELISA
DAGC387	Recombinant SARS-CoV-2 RBD (E406Q) [His]	HEK293 Cells	SDS-PAGE, ELISA
DAGC388	Recombinant SARS-CoV-2 RBD (F490S) [His]	HEK293 Cells	SDS-PAGE, ELISA
DAGC389	Recombinant SARS-CoV-2 RBD (K378N) [His]	HEK293 Cells	SDS-PAGE, ELISA
DAGC390	Recombinant SARS-CoV-2 RBD (N370S) [His]	HEK293 Cells	SDS-PAGE, ELISA
DAGC391	Recombinant SARS-CoV-2 RBD (Q414R) [His]	HEK293 Cells	SDS-PAGE, ELISA
DAGC392	Recombinant SARS-CoV-2 RBD (S477I) [His]	HEK293 Cells	SDS-PAGE, ELISA

DAGC393	Recombinant SARS-CoV-2 RBD (S477N) [His]	HEK293 Cells	SDS-PAGE, ELISA
DAGC394	Recombinant SARS-CoV-2 RBD (T385A) [His]	HEK293 Cells	SDS-PAGE, ELISA
DAGC395	Recombinant SARS-CoV-2 RBD (T393P) [His]	HEK293 Cells	SDS-PAGE, ELISA
DAGC396	Recombinant SARS-CoV-2 RBD (V395I) [His]	HEK293 Cells	SDS-PAGE, ELISA
DAGC397	Recombinant SARS-CoV-2 RBD (G485S) [His]	HEK293 Cells	SDS-PAGE, ELISA
DAGC398	Recombinant SARS-CoV-2 RBD (G482S) [His]	HEK293 Cells	SDS-PAGE, ELISA
DAGC399	Recombinant SARS-CoV-2 RBD (K444R) [His]	HEK293 Cells	SDS-PAGE, ELISA
DAGC400	Recombinant SARS-CoV-2 RBD (N440K) [His]	HEK293 Cells	SDS-PAGE, ELISA
DAGC401	Recombinant SARS-CoV-2 RBD (E471Q) [His]	HEK293 Cells	SDS-PAGE, ELISA
DAGC402	Recombinant SARS-CoV-2 RBD (P479S) [His]	HEK293 Cells	SDS-PAGE, ELISA
DAGC403	Recombinant SARS-CoV-2 RBD (A352S) [His]	HEK293 Cells	SDS-PAGE, ELISA
DAGC404	Recombinant SARS-CoV-2 RBD (K417N) [His]	HEK293 Cells	SDS-PAGE, ELISA
DAGC405	Recombinant SARS-CoV-2 RBD (P337S) [His]	HEK293 Cells	SDS-PAGE, ELISA
DAGC406	Recombinant SARS-CoV-2 RBD (P521R) [His]	HEK293 Cells	SDS-PAGE, ELISA
DAGC407	Recombinant SARS-CoV-2 RBD (S477R) [His]	HEK293 Cells	SDS-PAGE, ELISA
DAGC413	Recombinant SARS-CoV-2 RBD (Y453F) [His]	HEK293 Cells	SDS-PAGE, ELISA

SARS-CoV-2 biotinylated antigens

DAGC215	Biotinylated Recombinant SARS-CoV-2 S1 Protein [His, Avi]	HEK293 Cells	SDS-PAGE, ELISA
DAGC233	Biotinylated Recombinant SARS-CoV-2 S1 Protein [His]	HEK293 Cells	SDS-PAGE, ELISA
DAGC221	Biotinylated Recombinant SARS-CoV-2 RBD Protein [His, Avi]	HEK293 Cells	SDS-PAGE, ELISA
DAGC236	Biotinylated Recombinant SARS-CoV-2 RBD Protein [His, Avi]	Insect Cells	SDS-PAGE, ELISA
DAGC234	Biotinylated Recombinant SARS-CoV-2 RBD Protein [His]	HEK293 Cells	SDS-PAGE, ELISA
DAGC235	Biotinylated Recombinant SARS-CoV-2 RBD Protein [His]	Insect Cells	SDS-PAGE, ELISA
DAGC237	Biotinylated Recombinant SARS-CoV-2 N Protein [His]	Insect Cells	SDS-PAGE, ELISA
DAGC223	Biotinylated Recombinant SARS-CoV-2 N Protein [His, Avi]	E. coli	SDS-PAGE, ELISA

Other SARS-CoV-2 antigens

DAGC109	Recombinant SARS-CoV-2 S Protein [His]	HEK293 Cells	SDS-PAGE
DAGC158	Recombinant SARS-CoV-2 S (S1+S2 ECD) Protein [His]	Insect Cells	SDS-PAGE
DAGC091	Recombinant SARS-CoV-2 S1 Protein [His]	HEK293 Cells	SDS-PAGE
DAGC092	Recombinant SARS-CoV-2 S1 Protein [human Fc]	HEK293 Cells	SDS-PAGE
DAGC093	Recombinant SARS-CoV-2 S1 Protein [mouse Fc]	HEK293 Cells	SDS-PAGE
DAGC138	Recombinant SARS-CoV-2 S1 Protein	HEK293 Cells	SDS-PAGE
DAGC157	Recombinant SARS-CoV-2 S1 Protein (truncated) [His]	E. coli	SDS-PAGE

DAGC194	Recombinant SARS-CoV-2 S1 Protein [His]	Insect Cells	SDS-PAGE
DAGC195	Recombinant SARS-CoV-2 S1 NTD [His]	Insect Cells	SDS-PAGE
DAGC209	Recombinant SARS-CoV-2 RBD Protein (a.a. 319-541) [His]	E. coli	SDS-PAGE
DAGC089	Recombinant SARS-CoV-2 RBD Protein [Fc]	HEK293 Cells	SDS-PAGE
DAGC149	Recombinant SARS-CoV-2 RBD Protein [His]	HEK293 Cells	SDS-PAGE
DAGC173	Recombinant SARS-CoV-2 RBD Protein [hFc]	HEK293 Cells	SDS-PAGE
DAGC174	Recombinant SARS-CoV-2 RBD Protein [mFc]	HEK293 Cells	SDS-PAGE
DAGC183	Recombinant SARS-CoV-2 RBD + SD1 + SD2 [His]	HEK293 Cells	SDS-PAGE
DAGC184	Recombinant SARS-CoV-2 RBD + SD1 [His]	HEK293 Cells	SDS-PAGE
DAGC193	Recombinant SARS-CoV-2 RBD Protein [His]	Insect Cells	SDS-PAGE
DAGC249	Recombinant SARS-CoV-2 RBD Protein [His]	CHO Cells	SDS-PAGE
DAGC153	Recombinant SARS-CoV-2 S2 Protein (S2 ECD) [His]	Insect Cells	SDS-PAGE
DAGC260	Recombinant SARS-CoV-2 S2 Protein [His]	HEK293 Cells	SDS-PAGE
DAGC270	Recombinant SARS-CoV-2 S2 Protein (S2 ECD) [mFc]	HEK293 Cells	SDS-PAGE
DAGC300	Recombinant SARS-CoV-2 S2 Protein [His]	E. coli	SDS-PAGE
DAGC094	Recombinant SARS-CoV-2 N Protein (E. coli) [His]	E. coli	SDS-PAGE
DAGC140	Recombinant SARS-CoV-2 N Protein (N3 fragment) [His]	E. coli	SDS-PAGE
DAGC141	Recombinant SARS-CoV-2 N Protein (N5 fragment) [His]	E. coli	SDS-PAGE
DAGC155	Recombinant SARS-CoV-2 N Protein (truncated, N3) [His]	E. coli	SDS-PAGE
DAGC156	Recombinant SARS-CoV-2 N Protein (truncated) [His]	E. coli	SDS-PAGE
DAGC161	Recombinant SARS-CoV-2 N Protein (a.a.1-419) [His]	Insect Cells	SDS-PAGE
DAGC192	Recombinant SARS-CoV-2 N Protein [FLAG]	HEK293 Cells	SDS-PAGE
DAGC196	Recombinant SARS-CoV-2 N Protein [His]	HEK293 Cells	SDS-PAGE
DAGC311	Recombinant SARS-CoV-2 N Protein	Mammalian Cells	SDS-PAGE
DAGC165	Recombinant SARS-CoV-2 E Protein [His]	E. coli	SDS-PAGE
DAGC197	Recombinant SARS-CoV-2 S + M + E Protein [His]	E. coli	SDS-PAGE
DAGC154	Recombinant SARS-CoV-2 Papain-like Protease [His]	E. coli	SDS-PAGE
DAGC166	Recombinant SARS-CoV-2 3C-like Proteinase [His]	E. coli	SDS-PAGE
DAGC167	Recombinant SARS-CoV-2 NSP1 [His]	E. coli	SDS-PAGE
DAGC171	Recombinant SARS-CoV-2 NSP2 [His]	E. coli	SDS-PAGE
DAGC200	Recombinant SARS-CoV-2 NSP3 [His]	E. coli	SDS-PAGE
DAGC168	Recombinant SARS-CoV-2 NSP7 [His]	E. coli	SDS-PAGE
DAGC169	Recombinant SARS-CoV-2 NSP8 [His]	E. coli	SDS-PAGE
DAGC203	Recombinant SARS-CoV-2 NSP9 [His]	E. coli	SDS-PAGE

DAGC170	Recombinant SARS-CoV-2 NSP10 [His]	E. coli	SDS-PAGE
DAGC202	Recombinant SARS-CoV-2 NSP12 [GST]	E. coli	SDS-PAGE
DAGC205	Recombinant SARS-CoV-2 NSP13 [His]	E. coli	SDS-PAGE
DAGC204	Recombinant SARS-CoV-2 NSP15 [His]	E. coli	SDS-PAGE
DAGC199	Recombinant SARS-CoV-2 NSP16 [GST]	E. coli	SDS-PAGE
DAGC201	Recombinant SARS-CoV-2 NSP16 [His]	E. coli	SDS-PAGE
DAGC172	Recombinant SARS-CoV-2 Guanine-N7_meth [His]	E. coli	SDS-PAGE
DAGC224	Recombinant SARS-CoV-2 NSP7 + NSP8 Protein [His]	E. coli	SDS-PAGE
DAGC225	Recombinant SARS-CoV-2 NSP16 + NSP10 Heterodimer Protein [His, Strep]	E. coli	SDS-PAGE
DAGC207	Recombinant SARS-CoV-2 ORF3a Protein (a.a. 126-275) [His]	E. coli	SDS-PAGE
DAGC206	Recombinant SARS-CoV-2 ORF8 Protein (a.a. 16-121) [His]	E. coli	SDS-PAGE
DAGC271	Recombinant SARS-CoV-2 3C-like Proteinase	E. coli	SDS-PAGE
DAGC355	Recombinant SARS-CoV-2 NSP8 [Avi]	E. coli	SDS-PAGE
DAGC356	Recombinant SARS-CoV-2 NSP9 [His, Avi]	E. coli	SDS-PAGE
DAGC357	Recombinant SARS-CoV-2 3C-like Proteinase [His, Avi]	E. coli	SDS-PAGE

Rhinovirus

Rhinovirus is the most common viral infectious agent in humans and is the predominant cause of the common cold. It is highly contagious and spreads easily from person to person through respiratory droplets. Symptoms of rhinovirus infection typically include runny or stuffy nose, sneezing, cough, and sore throat. Rhinoviruses are positive-sense, single-stranded RNA viruses of the family *Picornaviridae*, genus *Enteroviridae*, and are classified into three species (A, B, and C). To date, more than 160 types of Rhinovirus have been identified. There are no vaccines against these viruses as there is a lack of cross-protection between serotypes. Most people recover within one week and infections are rarely serious.

Historically, the detection of rhinovirus has been performed by virus culture or immunofluorescence microscopy (IFA), but more recently PCR assays have become more widely used.

Ordering Information

Cat. No.	Product Name	Host	Application
Antibodies			
DMAB-CS24030	Anti-Rhinovirus 14 VP1 Mab, Clone 28JB	Rabbit	Neut
DMAB-CS24031	Anti-Rhinovirus 14 VP1 Mab, Clone 28JB	Mouse	Neut
DMAB-CS24034	Anti-Rhinovirus A29 VP1 Mab, Clone 646	Mouse	ELISA, IFA, FACS, WB, ICA
DMAB-CS24028	Anti-Rhinovirus VP2 Mab, Clone S27	Mouse	WB, IHC
DMAB-CS24032	Anti-Rhinovirus 2 VP2 Mab, Clone 9G6	Rabbit	Neut, WB, IP, IHC
DMAB-CS24033	Anti-Rhinovirus 2 VP2 Mab, Clone 9G6	Mouse	Neut, WB, IP, IHC
CABT-RM302	Anti-Rhinovirus VP3 Mab, Clone C2687N	Mouse	ELISA, IF

DMAB-CS24029	Anti-Rhinovirus VP3 Mab, Clone C1209N	Mouse	ELISA, IF
Antigens			
DAG-WT1958	Inactivated Human Rhinovirus A Culture Fluid	N/A	Control
DAG-WT1959	Inactivated Human Rhinovirus C Culture Fluid	N/A	Control
DAGC785	Native Rhinovirus Type 1A Antigen	E. coli	Immunoassay, WB
DAGC252	Recombinant Human Rhinovirus 16 VP0 (a.a. 70-330) [His]	E. coli	Immunoassay, WB
DAGC253	Recombinant Human Rhinovirus 16 VP1 (a.a. 565-853) [His]	E. coli	Immunoassay, WB
DAGC254	Recombinant Human Rhinovirus 16 VP2 (a.a. 70-330) [His]	E. coli	Immunoassay, WB
DAG-WT1151	Recombinant Human Rhinovirus 16 VP3 (a.a. 331-562) [His]	E. coli	Immunoassay, WB
DAG-WT1152	Recombinant Human Rhinovirus 16 VP4 (a.a. 2-69) [His]	E. coli	Immunoassay, WB
DAG1877	Recombinant Human rhinovirus 3C protease [His, GST]	E. coli	Enzyme
DAGC783	Recombinant Rhinovirus PreScission Protease [GST]	E. coli	Func, SDS-PAGE
DAGC784	Recombinant Rhinovirus PreScission Protease (a.a. 1-217) [His]	E. coli	Func, SDS-PAGE

Adenovirus

Adenoviruses are a family of DNA viruses that are an important cause of febrile illnesses in young children. They are most frequently associated with upper respiratory tract syndromes such as pharyngitis, but can also cause pneumonia and less commonly gastrointestinal, ophthalmologic, genitourinary, neurologic, and disseminated disease. Adenovirus derives its name from its initial isolation from human adenoids in 1953. Adenoviruses have a broad range of vertebrate hosts. In humans, 88 human adenoviruses in seven species groups (A to G) have been identified, and more than 50 different adenovirus serotypes have been found.

Since adenoviruses are associated with a variety of clinical symptoms and non-specific manifestations, identification of an infection based upon clinical criteria alone is challenging. Laboratory diagnosis can be made using antigen detection, PCR, virus isolation, and serology. Adenovirus typing is usually performed by hemagglutination inhibition and/or neutralization with type-specific antisera or by molecular methods. Mammalian adenoviruses share group-specific antigen epitopes (on the inside of hexons), which are the main antigens involved in the host immune response. By detecting the common hexon antigens, most commercial immunoassays are capable of recognizing the majority of Adenovirus serotypes in nasopharyngeal secretions or stool specimens.

Ordering Information

Cat. No.	Product Name	Matched Pair	Reactivity
Antibody pairs			
DMAB2931	Anti-ADV Mab, Clone C112M	DMAB2924 - DMAB2931 DMAB2924 - DMAB2933 DMAB2924 - DMAB2938	React with 16 serotypes including types 40 & 41.
DMAB2933	Anti-ADV Mab, Clone C935M		
DMAB2938	Anti-ADV Mab, Clone C10D605		
DMAB2924	Anti-ADV Mab, Clone A144		
DMAB2939	Anti-ADV Mab, Clone 2F12	DMAB2940 - DMAB2939	React with type 1, 5, 8 & 27.
DMAB2940	Anti-ADV Mab, Clone 8D12		
CABT-RM074	Anti-ADV Mab, Clone 2F463		

CABT-RM075	Anti-ADV Mab, Clone 2F464	CABT-RM075 - CABT-RM074	React with at least 30 serotypes including types 40 & 41.
CABT-CS014	Anti-ADV Type 1 & 2 Mab, Clone 90UT7	CABT-CS015 - CABT-CS014	React with type 1 & 2.
CABT-CS015	Anti-ADV Type 1 & 2 Mab, Clone 90UT8		
DMAB-CS23034	Anti-ADV Type 55 Mab, Clone M2188	DMAB-CS23035 - DMAB-CS23034	React with type 55.
DMAB-CS23035	Anti-ADV Type 55 Mab, Clone M2189		

Cat. No.	Product Name	Host	Application
----------	--------------	------	-------------

Other antibodies

DMABT-51066MA	Anti-ADV Mab, Clone C036 (BE62)	Mouse	ELISA, IHC
DMABT-51068MA	Anti-ADV Mab, Clone 8D22, IgM	Mouse	ELISA, IF, ID, IHC
DMABT-51069MA	Anti-ADV Mab, Clone 2542 (3D5)	Mouse	ELISA, IF
DMABT-51070MA	Anti-ADV Mab, Clone 4H0	Mouse	ELISA, IF
DMABT-51072MA	Anti-ADV Mab, Clone 9D5	Mouse	ELISA, ID, IHC
DMAB2936	Anti-ADV Mab, Clone C1283M	Mouse	ELISA, IHC, WB
DMAB2927	Anti-ADV Type 41 Mab, Clone 5G3	Mouse	ELISA
DMAB2928	Anti-ADV Type 40 Mab, Clone 5G9.A9	Mouse	ELISA
DMAB2929	Anti-ADV Type 40 & 41 Mab, Clone IX10.B9	Mouse	ELISA
DMAB2925	Anti-ADV Mab, Clone A144 [FITC]	Mouse	ELISA, IF
DMABT-Z59148	Anti-ADV Mab, Clone DKQF706 [FITC]	Mouse	ELISA, ICC, IF
DMABT-Z59158	Anti-ADV Type 7 Mab, Clone 3-P-26	Mouse	ELISA, IP, WB
DMABT-Z59142	Anti-ADV Type 5 E1A Mab, Clone O60	Mouse	WB, IP, IHC-P, ICC, IF
DMABT-Z59162	Anti-ADV Type 2 & 5 E1A Mab, Clone 2.P.9	Mouse	IP, WB, ICC
CABT-ZS1022	Anti-ADV Fiber Mab, Clone 4D2-5	Mouse	IF, IB
DPATB-H81051	Anti-ADV Pab	Rabbit	WB
DPBT-66803GA	Anti-ADV Pab	Goat	ELISA, IF, IHC, WB
DPBT-66802GA	Anti-ADV Pab [Biotin]	Goat	ELISA, IF, WB
DPAB0136	Anti-ADV Pab [FITC]	Goat	ELISA, IF, WB
DPATB-H81048	Anti-ADV Type 2 Pab	Goat	ELISA, ICC, IF
CABT-CS204	Anti-Avian ADV Group 1 Type 1 Pab	Chicken	ID, HI, IB
CABT-CS205	Anti-Avian ADV Group 1 Type 3 Pab	Chicken	ID, HI, IB
CABT-CS206	Anti-Avian ADV Group 1 Type 5 Pab	Chicken	ID, HI, IB
CABT-CS207	Anti-Avian ADV Group II (HEV) Pab	Chicken	ID, HI, IB
CABT-CS208	Anti-Avian ADV Group III (EDS) Pab	Chicken	ID, HI, IB
DPAB3420	Anti-ADV E1A Pab	Sheep	WB

Antigens

DAGA-458	Native Mouse ADV (Strain FL) Antigen	NIH 3T3 Cells	ELISA
DAGA-456	Native Canine ADV Type 1 Antigen	A-72 Cells	ELISA
DAGA-457	Native Canine ADV Type 2 Antigen	A-72 Cells	ELISA
DAGC077	Native ADV Type 2 (Strain Adenoid 6) Antigen	N/A	ELISA, Immunoassays, WB
DAGC415	Native ADV Type 3 Antigen	N/A	Immunoassays
DAGC417	Native ADV Type 4 Antigen	N/A	Immunoassays
DAGA-257	Native ADV Type 5 Antigen	N/A	ELISA, Positive control
DAGA-451	Native ADV Type 6 Antigen	MRC-5 Cells	Immunoassays
DAGC416	Native ADV Type 31 Antigen	N/A	Immunoassays
DAGA-452	Native ADV Type 40 Antigen	N/A	Immunoassays
DAGC419	Native ADV Type 41 Antigen	N/A	Immunoassays
DAGC522	Native Avian ADV Group I (Serotypes 1-12) Antigen	N/A	Immunoassays
DAGC524	Native Avian ADV Group I Type 1 (CELO-Phelps) Antigen	N/A	Immunoassays
DAGC525	Native Avian ADV Group II (Domermuth) Antigen	N/A	Immunoassays
DAGC526	Native Avian ADV Group III (CLKK115D) Antigen	N/A	Immunoassays
DAG-WT386	Recombinant ADV Hexon Antigen	Mammalian Cell	ELISA, LFIA

Contact Us

CREATIVE DIAGNOSTICS

45-1 Ramsey Road, Shirley, NY 11967, USA

Tel: 1-631-624-4882 (USA) 44-161-818-6441 (Europe)

Fax: 1-631-938-8221 | Email: info@creative-diagnostics.com

www.creative-diagnostics.com

