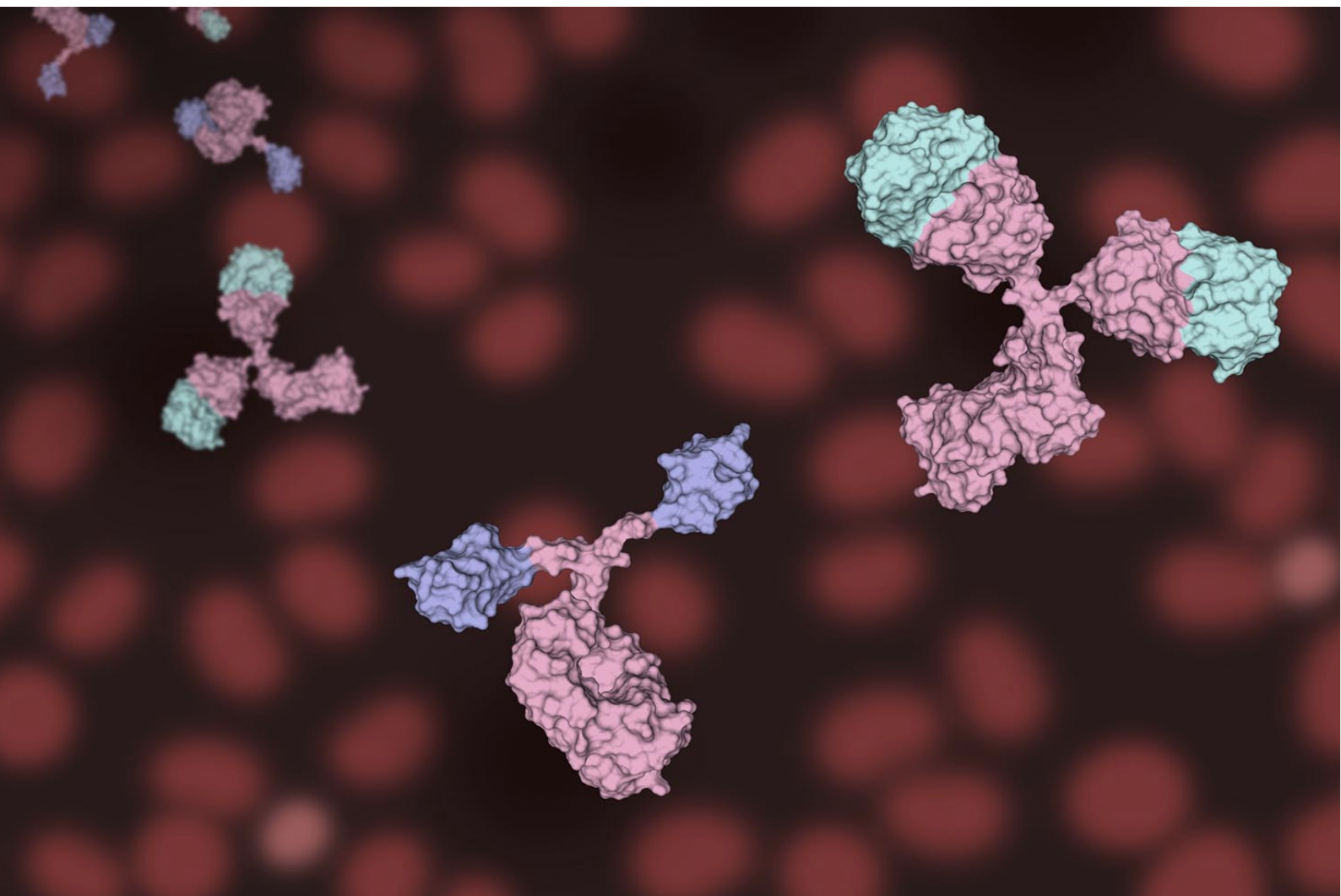


# HiResNb™ Secondary VHH Antibodies



## HiResNb™ Secondary VHH Antibody Performance

Creative Diagnostics offers HiResNb™ Secondary VHH Antibodies, which have excellent stability, specificity and sensitivity, and have been verified in a variety of applications.

# Content

<b>Introduction</b> .....	3
<b>HiResNb™ Secondary VHH Antibody Performance</b> .....	3
HiResNb™ Anti-Mouse IgG / IgM VHH Antibody .....	4
HiResNb™ Anti-Rabbit IgG VHH Antibody.....	7
HiResNb™ Anti-Human IgG / IgM / IgE / IgD / IgA VHH Antibody .....	8
HiResNb™ Anti-Chicken IgY VHH Antibody .....	10
HiResNb™ Anti-Goat IgG VHH Antibody .....	11
HiResNb™ Anti-Rat IgG VHH Antibody .....	12
<b>References</b> .....	12
<b>Contact Us</b> .....	12

## Introduction

VHH is the variable domain of camelid heavy chain antibodies, and it is also called single-domain antibody (sdAb) or nanobody. Due to the large size, traditional secondary antibodies hinder tissue penetration and reduce image resolution in super-resolution fluorescence microscopy which made VHHs/SdAbs an ideal candidate to replace such reagents. Additionally, site-specifically labeled SdAbs can place fluorophores closer than 2 nm to the antigen or even tolerate up to three dyes. Combining excellent antigen specificity, minimal lot-to-lot variation, and sustainable supplement, VHHs/SdAbs are considered to be a promising tool for super-resolution imaging.

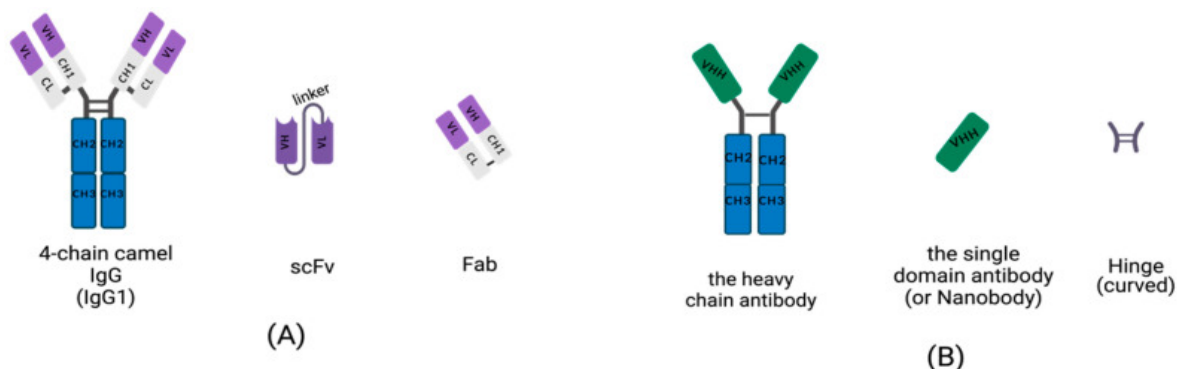


Fig. 1 Schematic diagram for the primary structure of a conventional antibody, heavy-chain antibody (HCAb), nanobody, and small, recombinant antibody.

## HiResNb™ Secondary VHH Antibody Performance

Creative Diagnostics offers HiResNb™ secondary VHH antibodies with multiple conjugations, which have excellent stability, specificity, and sensitivity, and have been verified in a variety of applications.

### Highlight Features

- Animal-free manufactured: Stable recombinant expression cell lines with minimal batch-to-batch variation.
- High sensitivity and specificity: Site-specific and isotype-specific VHH with a very low background.
- Brighter signal and higher resolution: Smallest size but tolerate up to 2-4 fluorophores.
- Broad applications covered: Validated in multiple applications, such as ELISA, WB, IP, FC, IF, etc.

## ◆ HiResNb™ Anti-Mouse IgG / IgM VHH Antibody

### Product Performance

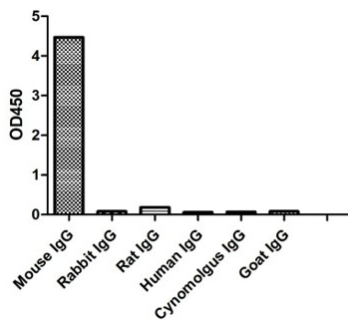


Fig. 2 Specificity for different species of IgG (DMABB-JP10)

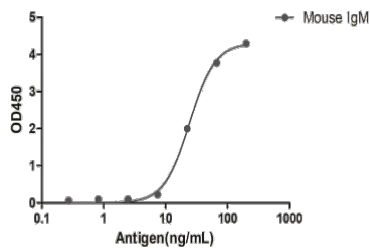


Fig. 3 A titer ELISA of mouse IgM. (DMABB-JP73)

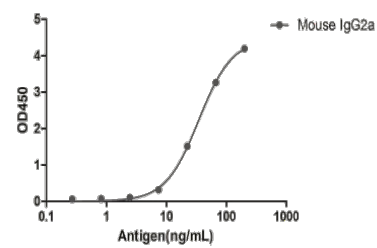


Fig. 4 A titer ELISA of mouse IgG2a. (DMABB-JP51)

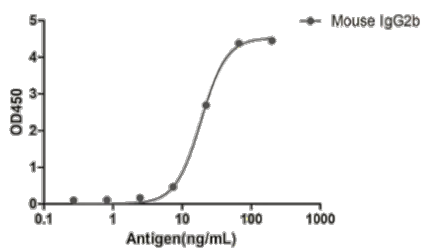


Fig. 5 A titer ELISA of mouse IgG2b. (DMABB-JP57)

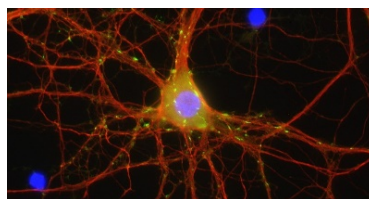


Fig. 6 Indirect immunostaining of PFA fixed mouse hippocampus neurons. (DMABB-JP99)

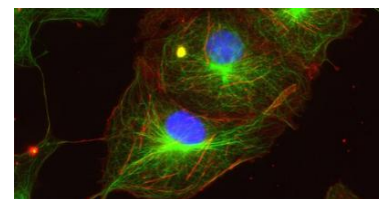


Fig. 7 Indirect immunostaining of PFA fixed Cos7 cells. (DMABB-JP100)

### Product List

#### HiResNb™ Anti-Mouse IgG Secondary Antibodies

Cat. No.	Product Name	Application
DMABB-JX21	HiResNb™ Anti-Mouse IgG(H+L) VHH antibody, clone 112-212	WB, ELISA
DMABB-JP42	HiResNb™ Anti-Mouse IgG(H+L) VHH antibody, clone 112-212 [HRP]	WB, ELISA
DMABB-JP41	HiResNb™ Anti-Mouse IgG(H+L) VHH antibody, clone 112-212 [Biotin]	ELISA
DMABB-JP43	HiResNb™ Anti-Mouse IgG(H+L) VHH antibody, clone 112-212 [Alexa Fluor 488]	WB, ICC/IF, ELISA, FC
DMABB-JP44	HiResNb™ Anti-Mouse IgG(H+L) VHH antibody, clone 112-212 [Alexa Fluor 594]	WB, ICC/IF, ELISA, FC
DMABB-JP45	HiResNb™ Anti-Mouse IgG(H+L) VHH antibody, clone 112-212 [Alexa Fluor 647]	WB, ICC/IF, ELISA, FC
DMABB-JX22	HiResNb™ Anti-Mouse IgG (F <sub>c</sub> γ specific) VHH antibody, clone 112-213	WB, ELISA
DMABB-JP47	HiResNb™ Anti-Mouse IgG(F <sub>c</sub> γ specific) VHH antibody, clone 112-213 [HRP]	WB, ELISA
DMABB-JP46	HiResNb™ Anti-Mouse IgG(F <sub>c</sub> γ specific) VHH antibody, clone 112-213 [Biotin]	ELISA
DMABB-JP48	HiResNb™ Anti-Mouse IgG(F <sub>c</sub> γ specific) VHH antibody, clone 112-213 [Alexa Fluor 488]	WB, ICC/IF, ELISA, FC
DMABB-JP49	HiResNb™ Anti-Mouse IgG(F <sub>c</sub> γ specific) VHH antibody, clone 112-213 [Alexa Fluor 594]	WB, ICC/IF, ELISA, FC
DMABB-JP50	HiResNb™ Anti-Mouse IgG(F <sub>c</sub> γ specific) VHH antibody, clone 112-213 [Alexa Fluor 647]	WB, ICC/IF, ELISA, FC

DMABB-JX26	HiResNb™ Anti-Mouse IgGκ VHH antibody, clone 112-217	WB, ELISA
DMABB-JP69	HiResNb™ Anti-Mouse IgGκ VHH antibody, clone 112-217 [HRP]	WB, ELISA
DMABB-JP68	HiResNb™ Anti-Mouse IgGκ VHH antibody, clone 112-217 [Biotin]	ELISA
DMABB-JP70	HiResNb™ Anti-Mouse IgGκ VHH antibody, clone 112-217 [Alexa Fluor 488]	WB, ICC/IF, ELISA, FC
DMABB-JP71	HiResNb™ Anti-Mouse IgGκ VHH antibody, clone 112-217 [Alexa Fluor 594]	WB, ICC/IF, ELISA, FC
DMABB-JP72	HiResNb™ Anti-Mouse IgGκ VHH antibody, clone 112-217 [Alexa Fluor 647]	WB, ICC/IF, ELISA, FC
DMABB-JP100	HiResNb™ Anti-Mouse Igκ light chain VHH antibody, clone 2B34 [Atto 488]	IF, WB

#### HiResNb™ Anti-Mouse IgG1 Secondary Antibodies

Cat. No.	Product Name	Application
DMABB-JX28	HiResNb™ Anti-Mouse IgG1(Fcγ specific) VHH antibody, clone 112-219	WB, ELISA
DMABB-JP76	HiResNb™ Anti-Mouse IgG1(Fcγ specific) VHH antibody, clone 112-219 [HRP]	WB, ELISA
DMABB-JP75	HiResNb™ Anti-Mouse IgG1(Fcγ specific) VHH antibody, clone 112-219 [Biotin]	ELISA
DMABB-JP77	HiResNb™ Anti-Mouse IgG1(Fcγ specific) VHH antibody, clone 112-219 [Alexa Fluor 488]	WB, ICC/IF, ELISA, FC
DMABB-JP78	HiResNb™ Anti-Mouse IgG1(Fcγ specific) VHH antibody, clone 112-219 [Alexa Fluor 594]	WB, ICC/IF, ELISA, FC
DMABB-JP79	HiResNb™ Anti-Mouse IgG1(Fcγ specific) VHH antibody, clone 112-219 [Alexa Fluor 647]	WB, ICC/IF, ELISA, FC
DMABB-JP98	HiResNb™ Anti-Mouse IgG1 VHH antibody, clone 21B5 [Alexa Fluor 647]	IF, WB
DMABB-JP97	HiResNb™ Anti-Mouse IgG1 VHH antibody, clone 21B5 [Atto 488]	IF, WB

#### HiResNb™ Anti-Mouse IgG2a Secondary Antibodies

Cat. No.	Product Name	Application
DMABB-JP99	HiResNb™ Anti-Mouse IgG2a/b VHH antibody, clone 25B5 [Atto 488]	IF, WB
DMABB-JX23	HiResNb™ Anti-Mouse IgG2a(Fcγ specific) VHH antibody, clone 112-214	WB, ELISA
DMABB-JP52	HiResNb™ Anti-Mouse IgG2a(Fcγ specific) VHH antibody, clone 112-214 [HRP]	WB, ELISA
DMABB-JP51	HiResNb™ Anti-Mouse IgG2a(Fcγ specific) VHH antibody, clone 112-214 [Biotin]	ELISA
DMABB-JP53	HiResNb™ Anti-Mouse IgG2a(Fcγ specific) VHH antibody, clone 112-214 [Alexa Fluor 488]	WB, ICC/IF, ELISA, FC
DMABB-JP54	HiResNb™ Anti-Mouse IgG2a(Fcγ specific) VHH antibody, clone 112-214 [Alexa Fluor 594]	WB, ICC/IF, ELISA, FC
DMABB-JP55	HiResNb™ Anti-Mouse IgG2a(Fcγ specific) VHH antibody, clone 112-214 [Alexa Fluor 647]	WB, ICC/IF, ELISA, FC

#### HiResNb™ Anti-Mouse IgG2b Secondary Antibodies

Cat. No.	Product Name	Application
DMABB-JX24	HiResNb™ Anti-Mouse IgG2b(Fcγ specific) VHH antibody, clone 112-215	WB, ELISA
DMABB-JP57	HiResNb™ Anti-Mouse IgG2b(Fcγ specific) VHH antibody, clone 112-215 [HRP]	WB, ELISA
DMABB-JP56	HiResNb™ Anti-Mouse IgG2b(Fcγ specific) VHH antibody, clone 112-215 [Biotin]	ELISA
DMABB-JP58	HiResNb™ Anti-Mouse IgG2b(Fcγ specific) VHH antibody, clone 112-215 [Alexa Fluor 488]	WB, ICC/IF, ELISA, FC

DMABB-JP59	HiResNb™ Anti-Mouse IgG2b(Fcy specific) VHH antibody, clone 112-215 [Alexa Fluor 594]	WB, ICC/IF, ELISA, FC
DMABB-JP60	HiResNb™ Anti-Mouse IgG2b(Fcy specific) VHH antibody, clone 112-215 [Alexa Fluor 647]	WB, ICC/IF, ELISA, FC

#### HiResNb™ Anti Mouse IgG3 Secondary Antibodies

Cat. No.	Product Name	Application
DMABB-JX25	HiResNb™ Anti-Mouse IgG3(Fcy specific) VHH antibody, clone 112-216	WB, ELISA
DMABB-JP62	HiResNb™ Anti-Mouse IgG3(Fcy specific) VHH antibody, clone 112-216 [HRP]	WB, ELISA
DMABB-JP61	HiResNb™ Anti-Mouse IgG3(Fcy specific) VHH antibody, clone 112-216 [Biotin]	ELISA
DMABB-JP63	HiResNb™ Anti-Mouse IgG3(Fcy specific) VHH antibody, clone 112-216 [Alexa Fluor 488]	WB, ICC/IF, ELISA, FC
DMABB-JP66	HiResNb™ Anti-Mouse IgG3(Fcy specific) VHH antibody, clone 112-216 [Alexa Fluor 594]	WB, ICC/IF, ELISA, FC
DMABB-JP67	HiResNb™ Anti-Mouse IgG3(Fcy specific) VHH antibody, clone 112-216 [Alexa Fluor 647]	WB, ICC/IF, ELISA, FC

#### HiResNb™ Anti-Mouse IgM Secondary Antibodies

Cat. No.	Product Name	Application
DMABB-JX27	HiResNb™ Anti-Mouse IgM( $\mu$ chain specific) VHH antibody, clone 112-218	WB, ELISA
DMABB-JP74	HiResNb™ Anti-Mouse IgM( $\mu$ chain specific) VHH antibody, clone 112-218 [HRP]	WB, ELISA
DMABB-JP73	HiResNb™ Anti-Mouse IgM( $\mu$ chain specific) VHH antibody, clone 112-218 [Biotin]	ELISA

## ◆ HiResNb™ Anti-Rabbit IgG VHH Antibody

### Product Performance

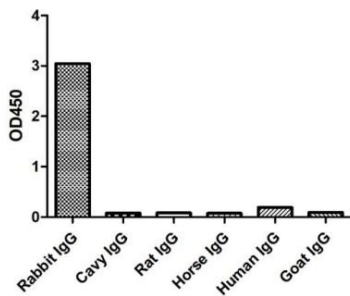


Fig. 8 Specificity for different species of IgG (DMABB-JP80)

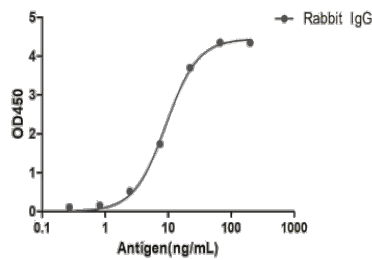


Fig. 9 A titer ELISA of Rabbit IgG. (DMABB-JP80)

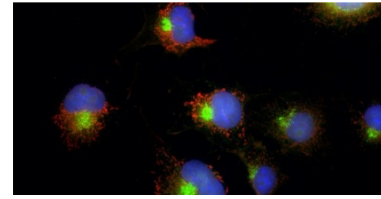


Fig. 10 Indirect immunostaining of PFA fixed Cos7 cells. (DMABB-JP101)

### Product List

#### HiResNb™ Anti-Rabbit IgG Secondary Antibodies

Cat. No.	Product Name	Application
DMABB-JX29	HiResNb™ Anti-Rabbit IgG(Fcγ specific) VHH antibody, clone 136-212	WB, ELISA
DMABB-JP81	HiResNb™ Anti-Rabbit IgG(Fcγ specific) VHH antibody, clone 136-212 [HRP]	WB, ELISA
DMABB-JP80	HiResNb™ Anti-Rabbit IgG(Fcγ specific) VHH antibody, clone 136-212 [Biotin]	WB, ELISA
DMABB-JP82	HiResNb™ Anti-Rabbit IgG(Fcγ specific) VHH antibody, clone 136-212 [Alexa Fluor 488]	WB, ICC/IF, ELISA, FC
DMABB-JP83	HiResNb™ Anti-Rabbit IgG(Fcγ specific) VHH antibody, clone 136-212 [Alexa Fluor 594]	WB, ICC/IF, ELISA, FC
DMABB-JP84	HiResNb™ Anti-Rabbit IgG(Fcγ specific) VHH antibody, clone 136-212 [Alexa Fluor 647]	WB, ICC/IF, ELISA, FC
DMABB-JX30	HiResNb™ Anti-Rabbit IgG(Fab specific) VHH antibody, clone 136-214	WB, ELISA
DMABB-JP85	HiResNb™ Anti-Rabbit IgG(Fab specific) VHH antibody, clone 136-214 [HRP]	WB, ELISA
DMABB-JP64	HiResNb™ Anti-Rabbit IgG(Fab specific) VHH antibody, clone 136-214 [Biotin]	WB, ELISA, IP
DMABB-JX31	HiResNb™ Anti-Rabbit IgGκ VHH antibody, clone 136-215	WB, ELISA
DMABB-JP86	HiResNb™ Anti-Rabbit IgGκ VHH antibody, clone 136-215 [HRP]	WB, ELISA
DMABB-JP65	HiResNb™ Anti-Rabbit IgGκ VHH antibody, clone 136-215 [Biotin]	WB, ELISA, IP
DMABB-JP101	HiResNb™ Anti-Rabbit IgG VHH antibody, clone 21F21 [Atto 488]	IF, WB

## ◆ HiResNb™ Anti-Human IgG / IgM / IgE / IgD / IgA VHH Antibody

### Product Performance

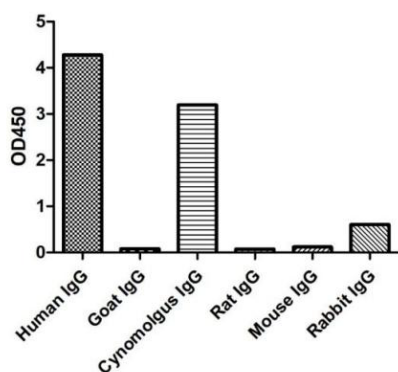


Fig. 11 Specificity for different species of IgG (DMABB-JP10)

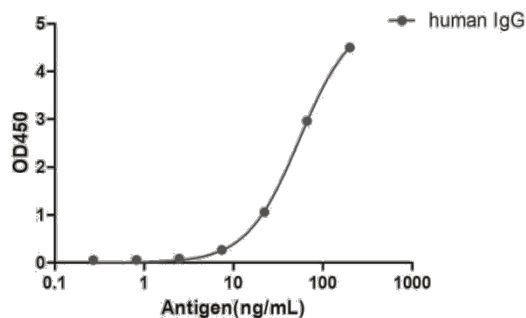


Fig. 12 A titer ELISA of Human IgG. (DMABB-JP10)

### Product List

HiResNb™ Anti-Human IgG Secondary Antibodies		
Cat. No.	Product Name	Application
DMABB-JP38	HiResNb™ Anti-Human IgG-Fc VHH antibody, clone 134-222	ELISA, IP
DMABB-JP40	HiResNb™ Anti-Human IgG-Fc VHH antibody, clone 134-222 [HRP]	WB, ELISA
DMABB-JP39	HiResNb™ Anti-Human IgG-Fc VHH antibody, clone 134-222 [Biotin]	ELISA, IP
DMABB-JP10	HiResNb™ Anti-Human IgG(Fc $\gamma$ specific) VHH antibody, clone 134-212	WB, ELISA
DMABB-JP13	HiResNb™ Anti-Human IgG(Fc $\gamma$ specific) VHH antibody, clone 134-212 [HRP]	WB, ELISA
DMABB-JP12	HiResNb™ Anti-Human IgG(Fc $\gamma$ specific) VHH antibody, clone 134-212 [Biotin]	WB, ELISA
DMABB-JP11	HiResNb™ Anti-Human IgG(Fc $\gamma$ specific) VHH antibody, clone 134-212 [Alexa Fluor 488]	WB, ICC/IF, ELISA, FC
DMABB-JP14	HiResNb™ Anti-Human IgG(Fc $\gamma$ specific) VHH antibody, clone 134-212 [Alexa Fluor 594]	WB, ICC/IF, ELISA, FC
DMABB-JP15	HiResNb™ Anti-Human IgG(Fc $\gamma$ specific) VHH antibody, clone 134-212 [Alexa Fluor 647]	WB, ICC/IF, ELISA, FC
DMABB-JP22	HiResNb™ Anti-Human IgG(Fab specific) VHH antibody, clone 134-215 [Biotin]	WB, ELISA, IP
DMABB-JP35	HiResNb™ Anti-Human IgG(CH1 specific) VHH antibody, clone 134-216	ELISA
DMABB-JP37	HiResNb™ Anti-Human IgG(CH1 specific) VHH antibody, clone 134-216 [HRP]	WB, ELISA
DMABB-JP36	HiResNb™ Anti-Human IgG(CH1 specific) VHH antibody, clone 134-216 [Biotin]	WB, ELISA, IP
DMABB-JP19	HiResNb™ Anti-Human IgG lambda VHH antibody, clone 134-214	WB, ELISA
DMABB-JP21	HiResNb™ Anti-Human IgG lambda VHH antibody, clone 134-214 [HRP]	WB, ELISA
DMABB-JP20	HiResNb™ Anti-Human IgG lambda VHH antibody, clone 134-214 [Biotin]	WB, ELISA, IP
DMABB-JP16	HiResNb™ Anti-Human IgGk VHH antibody, clone 134-213	WB, ELISA
DMABB-JP18	HiResNb™ Anti-Human IgGk VHH antibody, clone 134-213 [HRP]	WB, ELISA

DMABB-JP17	<a href="#">HiResNb™ Anti-Human IgGκ VHH antibody, clone 134-213 [Biotin]</a>	WB, ELISA, IP
<b>HiResNb™ Anti-Human IgM Secondary Antibodies</b>		
<b>Cat. No.</b>	<b>Product Name</b>	<b>Application</b>
DMABB-JP26	<a href="#">HiResNb™ Anti-Human IgM VHH antibody, clone 134-221</a>	ELISA, IP
DMABB-JP28	<a href="#">HiResNb™ Anti-Human IgM VHH antibody, clone 134-221 [HRP]</a>	ELISA
DMABB-JP27	<a href="#">HiResNb™ Anti-Human IgM VHH antibody, clone 134-221 [Biotin]</a>	ELISA, IP
<b>HiResNb™ Anti-Human IgE Secondary Antibodies</b>		
<b>Cat. No.</b>	<b>Product Name</b>	<b>Application</b>
DMABB-JP23	<a href="#">HiResNb™ Anti-Human IgE VHH antibody, clone 134-218</a>	ELISA, IP
DMABB-JP25	<a href="#">HiResNb™ Anti-Human IgE VHH antibody, clone 134-218 [HRP]</a>	ELISA
DMABB-JP24	<a href="#">HiResNb™ Anti-Human IgE VHH antibody, clone 134-218 [Biotin]</a>	ELISA, IP
<b>HiResNb™ Anti-Human IgD Secondary Antibodies</b>		
<b>Cat. No.</b>	<b>Product Name</b>	<b>Application</b>
DMABB-JP32	<a href="#">HiResNb™ Anti-Human IgD VHH antibody, clone 134-219</a>	ELISA, IP
DMABB-JP34	<a href="#">HiResNb™ Anti-Human IgD VHH antibody, clone 134-219 [HRP]</a>	ELISA
DMABB-JP33	<a href="#">HiResNb™ Anti-Human IgD VHH antibody, clone 134-219 [Biotin]</a>	ELISA, IP
<b>HiResNb™ Anti-Human IgA Secondary Antibodies</b>		
<b>Cat. No.</b>	<b>Product Name</b>	<b>Application</b>
DMABB-JP29	<a href="#">HiResNb™ Anti-Human IgA VHH antibody, clone 134-210</a>	ELISA, IP
DMABB-JP31	<a href="#">HiResNb™ Anti-Human IgA VHH antibody, clone 134-210 [HRP]</a>	ELISA
DMABB-JP30	<a href="#">HiResNb™ Anti-Human IgA VHH antibody, clone 134-210 [Biotin]</a>	ELISA, IP

## ◆ HiResNb™ Anti-Chicken IgY VHH Antibody

### Product Performance

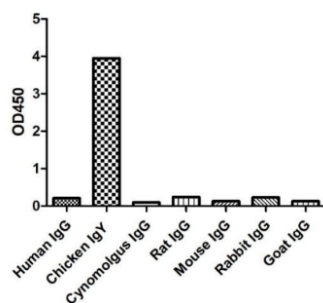


Fig. 13 Specificity for different species of IgG (DMABB-JP01)

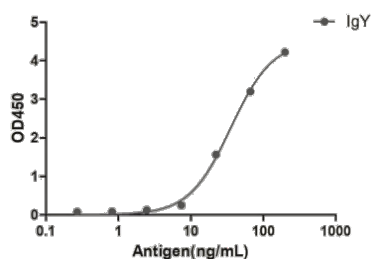


Fig. 14 A titer ELISA of chicken IgY. (DMABB-JP01)

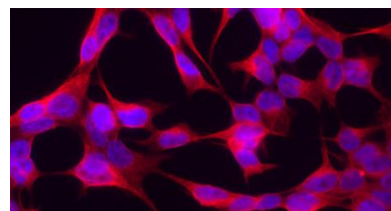


Fig. 15 Indirect immunostaining of PFA fixed HeLa cells. (DMABB-JP96)

### Product List

HiResNb™ Anti-Chicken IgY Secondary Antibodies		
Cat. No.	Product Name	Application
DMABB-JP01	HiResNb™ Anti-Chicken IgY VHH antibody, clone 135-212	WB, ELISA
DMABB-JP03	HiResNb™ Anti-Chicken IgY VHH antibody, clone 135-212 [HRP]	WB, ELISA
DMABB-JP02	HiResNb™ Anti-Chicken IgY VHH antibody, clone 135-212 [Biotin]	ELISA
DMABB-JP96	HiResNb™ Anti-Chicken IgY VHH antibody, clone 4H3 [Alexa Fluor 568]	IF, WB

## ◆ HiResNb™ Anti-Goat IgG VHH Antibody

### Product Performance

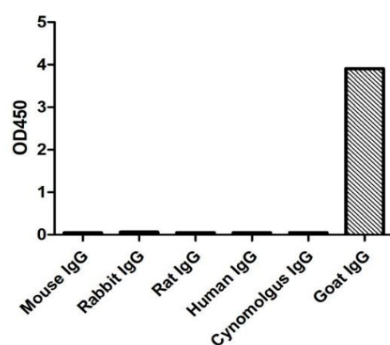


Fig. 16 Specificity for different species of IgG (DMABB-JP04)

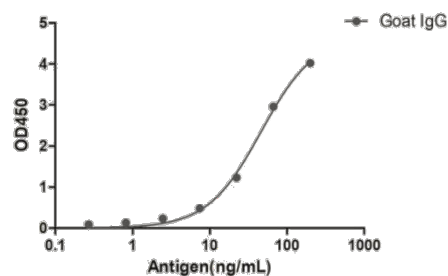


Fig. 17 A titer ELISA of Goat IgG. (DMABB-JP04)

### Product List

#### HiResNb™ Anti-Goat IgG Secondary Antibodies

Cat. No.	Product Name	Application
DMABB-JP07	HiResNb™ Anti-Goat IgG(H+L) VHH antibody, clone 165-213	WB, ELISA
DMABB-JP09	HiResNb™ Anti-Goat IgG(H+L) VHH antibody, clone 165-213 [HRP]	WB, ELISA
DMABB-JP08	HiResNb™ Anti-Goat IgG(H+L) VHH antibody, clone 165-213 [Biotin]	WB, ELISA, IP
DMABB-JP04	HiResNb™ Anti-Goat IgG(Fcγ specific) VHH antibody, clone 165-212	WB, ELISA
DMABB-JP06	HiResNb™ Anti-Goat IgG(Fcγ specific) VHH antibody, clone 165-212 [HRP]	WB, ELISA
DMABB-JP05	HiResNb™ Anti-Goat IgG(Fcγ specific) VHH antibody, clone 165-212 [Biotin]	WB, ELISA

## ◆ HiResNb™ Anti-Rat IgG VHH Antibody

### Product List

HiResNb™ Anti-Rat IgG Secondary Antibodies		
Cat. No.	Product Name	Application
DMABB-JX32	HiResNb™ Anti-Rat IgG(H+L) VHH antibody, clone 182-212	WB, ELISA
DMABB-JP88	HiResNb™ Anti-Rat IgG(H+L) VHH antibody, clone 182-212 [HRP]	WB, ELISA
DMABB-JP87	HiResNb™ Anti-Rat IgG(H+L) VHH antibody, clone 182-212 [Biotin]	WB, ELISA, IP
DMABB-JP89	HiResNb™ Anti-Rat IgG(H+L) VHH antibody, clone 182-212 [Alexa Fluor 488]	WB, ICC/IF, ELISA, FC
DMABB-JP90	HiResNb™ Anti-Rat IgG(H+L) VHH antibody, clone 182-212 [Alexa Fluor 594]	WB, ICC/IF, ELISA, FC
DMABB-JP91	HiResNb™ Anti-Rat IgG(H+L) VHH antibody, clone 182-212 [Alexa Fluor 647]	WB, ICC/IF, ELISA, FC
DMABB-JX33	HiResNb™ Anti-Rat IgG(Fcγ specific) VHH antibody, clone 182-213	WB, ELISA
DMABB-JP93	HiResNb™ Anti-Rat IgG(Fcγ specific) VHH antibody, clone 182-213 [HRP]	WB, ELISA
DMABB-JP92	HiResNb™ Anti-Rat IgG(Fcγ specific) VHH antibody, clone 182-213 [Biotin]	WB, ELISA, IP
DMABB-JX34	HiResNb™ Anti-Rat IgG(Fab specific) VHH antibody, clone 182-214	WB, ELISA
DMABB-JP95	HiResNb™ Anti-Rat IgG(Fab specific) VHH antibody, clone 182-214 [HRP]	WB, ELISA
DMABB-JP94	HiResNb™ Anti-Rat IgG(Fab specific) VHH antibody, clone 182-214 [Biotin]	WB, ELISA, IP

### References

1. Pleiner T.; *et al.* A toolbox of anti-mouse and anti-rabbit IgG secondary nanobodies. *J Cell Biol.* 2018 Mar 5;217(3):1143-1154.
2. Tang H.; *et al.* Application Progress of the Single Domain Antibody in Medicine. *Int J Mol Sci.* 2023 Feb 20;24(4):4176.
3. Kunz S.; *et al.* NANOBODY® Molecule, a Giga Medical Tool in Nanodimensions. *Int J Mol Sci.* 2023 Aug 25;24(17):13229.
4. Pleiner T.; *et al.* Nanobodies: site-specific labeling for super-resolution imaging, rapid epitope-mapping and native protein complex isolation. *Elife.* 2015 Dec 3;4:e11349.

### Contact Us

#### CREATIVE DIAGNOSTICS

45-1 Ramsey Road, Shirley, NY 11967, USA

Tel: 1-631-624-4882 (USA) 44-161-818-6441 (Europe)

Fax: 1-631-938-8221 | Email: [info@creative-diagnostics.com](mailto:info@creative-diagnostics.com)

[www.creative-diagnostics.com](http://www.creative-diagnostics.com)

**CD** Creative Diagnostics®