



User's Manual

Human ADM(Adrenomedullin) ELISA Kit



DEIA1755



96T



This product is for research use only and is not intended for diagnostic use.

For illustrative purposes only. To perform the assay the instructions for use provided with the kit have to be used.

Creative Diagnostics

 **Address: 45-1 Ramsey Road, Shirley, NY 11967, USA**

 **Tel: 1-631-624-4882 (USA) 44-161-818-6441 (Europe)**  **Fax: 1-631-938-8221**

 **Email: info@creative-diagnostics.com**  **Web: www.creative-diagnostics.com**

PRODUCT INFORMATION

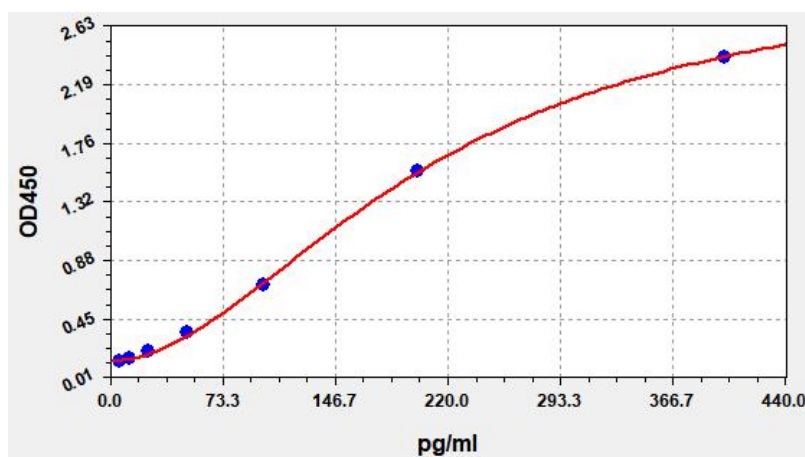
Intended Use

ADM ELISA Kit allows for the in vitro quantitative determination of ADM concentrations in serum, plasma, tissue homogenates and other biological fluids.

Storage

2-8 °C for 6 months

Typical Standard Curve



Precision

Intra-Assay: CV<8%

Inter-Assay: CV<10%

Detection Range

6.25-400pg/ml

Sensitivity

< 3.75pg/ml

Linearity

The linearity of the kit was assayed by testing samples spiked with appropriate concentration of ADM and their serial dilutions. The results were demonstrated by the percentage of calculated concentration to the expected.

Sample	1:2	1:4	1:8
serum(n=5)	90-105%	87-105%	92-100%
EDTA plasma(n=5)	87-98%	85-101%	85-92%
heparin plasma(n=5)	81-88%	82-92%	85-97%

Recovery

Matrices listed below were spiked with certain level of ADM and the recovery rates were calculated by comparing the measured value to the expected amount of ADM in samples.

Matrix	Recovery range(%)	Average(%)
serum(n=5)	90-101	97
EDTA plasma(n=5)	90-104	96
heparin plasma(n=5)	85-101	92