



User's Manual

Rat Copeptin ELISA Kit



DEIA-NS2307-99



96T



This product is for research use only and is not intended for diagnostic use.

For illustrative purposes only. To perform the assay the instructions for use provided with the kit have to be used.

Creative Diagnostics

 Address: 45-1 Ramsey Road, Shirley, NY 11967, USA

 Tel: 1-631-624-4882 (USA) 44-161-818-6441 (Europe)  Fax: 1-631-938-8221

 Email: info@creative-diagnostics.com  Web: www.creative-diagnostics.com

PRODUCT INFORMATION

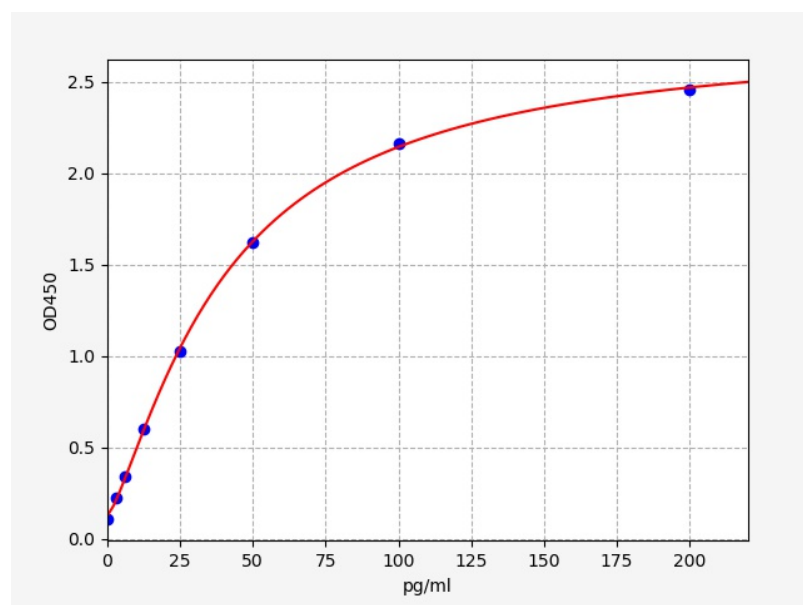
Intended Use

In vitro quantitative determination of CPP/Copeptin concentrations in serum, plasma, cell culture supernatant and other biological samples.

Storage

2-8 °C for 6 months

Typical Standard Curve



Performance Characteristics

Perform the stability test for the sealed kit at 37°C and 2-8°C and get relevant data.

| Elisa kit(n=5) | 37°C for 1 month | 2-8°C for 6 months |
|----------------|------------------|--------------------|
| Average (%) | 80 | 95-100 |

Precision

Intra-Assay: CV<8%

Inter-Assay: CV<10%

Detection Range

3.125-200pg/ml

Sensitivity

< 1.875pg/ml

Specificity

Specifically recognize CPP/Copeptin, no obvious cross reaction with other analogues

Linearity

Dilute the sample with a certain amount of CPP/Copeptin at 1:2, 1:4 and 1:8 to get the recovery range.

| Sample | 1:2 | 1:4 | 1:8 |
|---------------------|--------|---------|---------|
| Serum(n=5) | 81-94% | 89-104% | 85-103% |
| EDTA Plasma(n=5) | 83-92% | 86-104% | 82-97% |
| Heparin Plasma(n=5) | 90-97% | 94-99% | 88-99% |

Recovery

Add a certain amount of CPP/Copeptin into the sample. Calculate the recovery by comparing the measured value with the expected amount of CPP/Copeptin in the sample.

| Matrix | Recovery Range (%) | Average (%) |
|---------------------|--------------------|-------------|
| Serum(n=5) | 87-100 | 96 |
| EDTA Plasma(n=5) | 90-105 | 91 |
| Heparin Plasma(n=5) | 87-103 | 97 |