



## User's Manual

# Human calprotectin ELISA Kit



DEIA-NS2307-95



96T



This product is for research use only and is not intended for diagnostic use.

For illustrative purposes only. To perform the assay the instructions for use provided with the kit have to be used.

---

### Creative Diagnostics

 Address: 45-1 Ramsey Road, Shirley, NY 11967, USA

 Tel: 1-631-624-4882 (USA) 44-161-818-6441 (Europe)  Fax: 1-631-938-8221

 Email: [info@creative-diagnostics.com](mailto:info@creative-diagnostics.com)  Web: [www.creative-diagnostics.com](http://www.creative-diagnostics.com)

---

## PRODUCT INFORMATION

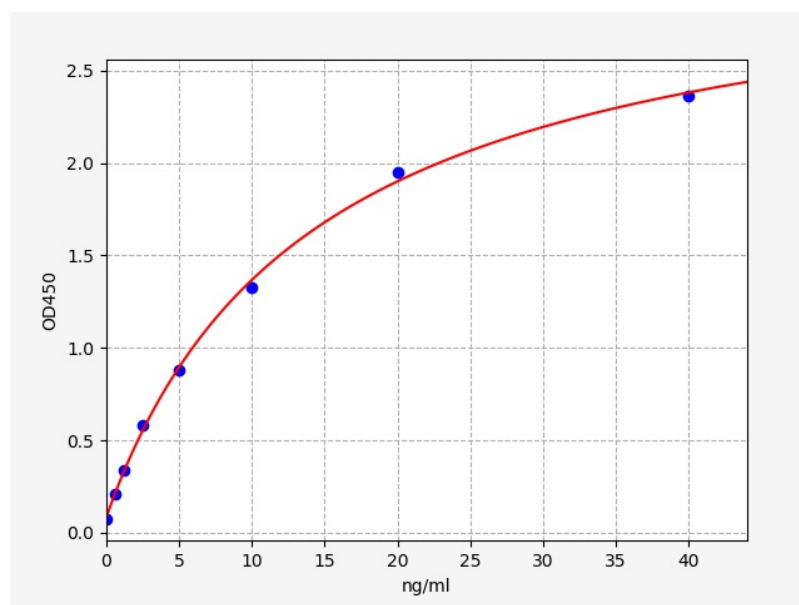
### Intended Use

calprotectinELISA Kit allows for the in vitro quantitative determination of S100A8/S100A9 Heterodimer concentrations in serum, plasma, tissue homogenates and other biological fluids.

### Storage

2-8 °C for 6 months

### Typical Standard Curve



### Precision

Intra-Assay: CV<8%

Inter-Assay: CV<10%

### Detection Range

0.625-40ng/ml

### Sensitivity

< 0.375ng/ml

### Linearity

The linearity of the kit was assayed by testing samples spiked with appropriate concentration of S100A8/S100A9 Heterodimer and their serial dilutions. The results were demonstrated by the percentage of calculated concentration to the expected.

Sample	1:2	1:4	1:8
serum(n=5)	85-103%	91-105%	98-104%
EDTA plasma(n=5)	82-100%	89-96%	84-101%
heparin plasma(n=5)	81-98%	81-98%	81-98%

## Recovery

Matrices listed below were spiked with certain level of S100A8/S100A9 Heterodimer and the recovery rates were calculated by comparing the measured value to the expected amount of S100A8/S100A9 Heterodimer in samples.

Matrix	Recovery range(%)	Average(%)
serum(n=5)	88-99	92
EDTA plasma(n=5)	86-102	92
heparin plasma(n=5)	89-103	96