



**User's Manual**

# Human c-myc(c-myc Oncogene Product) ELISA Kit



**DEIA-NS2307-85**



**96T**



This product is for research use only and is not intended for diagnostic use.

For illustrative purposes only. To perform the assay the instructions for use provided with the kit have to be used.

---

**Creative Diagnostics**

 **Address: 45-1 Ramsey Road, Shirley, NY 11967, USA**

 **Tel: 1-631-624-4882 (USA) 44-161-818-6441 (Europe)**  **Fax: 1-631-938-8221**

 **Email: [info@creative-diagnostics.com](mailto:info@creative-diagnostics.com)**  **Web: [www.creative-diagnostics.com](http://www.creative-diagnostics.com)**

---

## PRODUCT INFORMATION

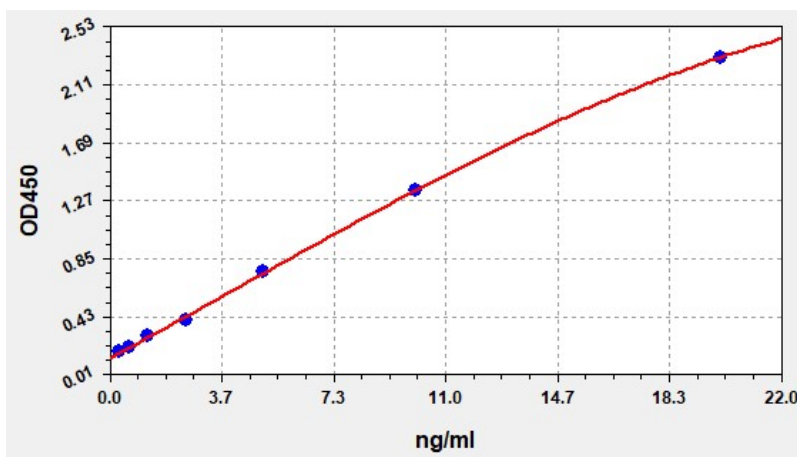
### Intended Use

c-myc ELISA Kit allows for the in vitro quantitative determination of c-myc concentrations in serum, plasma, tissue homogenates and other biological fluids.

### Storage

2-8 °C for 6 months

### Typical Standard Curve



### Precision

Intra-Assay: CV<8%

Inter-Assay: CV<10%

### Detection Range

0.313-20ng/ml

### Sensitivity

< 0.188ng/ml

### Linearity

The linearity of the kit was assayed by testing samples spiked with appropriate concentration of c-myc and their serial dilutions. The results were demonstrated by the percentage of calculated concentration to the

expected.

Sample	1:2	1:4	1:8
serum(n=5)	85-98%	86-103%	87-100%
EDTA plasma(n=5)	84-94%	94-98%	85-100%
heparin plasma(n=5)	81-99%	84-99%	82-97%

## Recovery

Matrices listed below were spiked with certain level of c-myc and the recovery rates were calculated by comparing the measured value to the expected amount of c-myc in samples.

Matrix	Recovery range(%)	Average(%)
serum(n=5)	88-105	99
EDTA plasma(n=5)	87-105	92
heparin plasma(n=5)	88-101	95