



User's Manual

Human CGRP(Calcitonin Gene Related Peptide) ELISA Kit



DEIA-NS2307-84



96T



This product is for research use only and is not intended for diagnostic use.

For illustrative purposes only. To perform the assay the instructions for use provided with the kit have to be used.

Creative Diagnostics

 **Address: 45-1 Ramsey Road, Shirley, NY 11967, USA**



Tel: 1-631-624-4882 (USA) 44-161-818-6441 (Europe)



Fax: 1-631-938-8221



Email: info@creative-diagnostics.com



Web: www.creative-diagnostics.com

PRODUCT INFORMATION

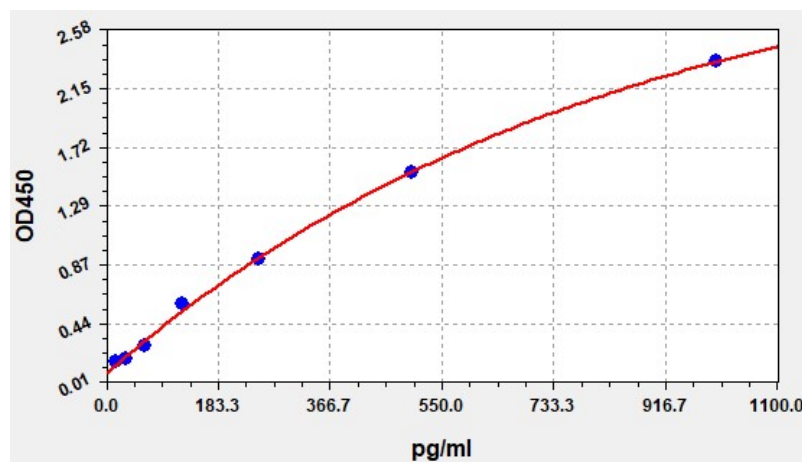
Intended Use

CGRP ELISA Kit allows for the in vitro quantitative determination of CGRP concentrations in serum, plasma, tissue homogenates and other biological fluids.

Storage

2-8 °C for 6 months

Typical Standard Curve



Precision

Intra-Assay: CV<8%

Inter-Assay: CV<10%

Detection Range

15.625-1000pg/ml

Sensitivity

< 9.375pg/ml

Linearity

The linearity of the kit was assayed by testing samples spiked with appropriate concentration of CGRP and their serial dilutions. The results were demonstrated by the percentage of calculated concentration to the

expected.

Sample	1:2	1:4	1:8
serum(n=5)	86-105%	89-102%	88-104%
EDTA plasma(n=5)	83-99%	85-98%	86-96%
heparin plasma(n=5)	86-94%	83-97%	80-96%

Recovery

Matrices listed below were spiked with certain level of CGRP and the recovery rates were calculated by comparing the measured value to the expected amount of CGRP in samples.

Matrix	Recovery range(%)	Average(%)
serum(n=5)	87-101	93
EDTA plasma(n=5)	85-95	90
heparin plasma(n=5)	89-104	95