



User's Manual

Human CETP(Cholesteryl ester transfer protein) ELISA Kit

REF

DEIA-NS2307-82



96T

RUO

This product is for research use only and is not intended for diagnostic use.

For illustrative purposes only. To perform the assay the instructions for use provided with the kit have to be used.

Creative Diagnostics

 **Address:** 45-1 Ramsey Road, Shirley, NY 11967, USA

 **Tel:** 1-631-624-4882 (USA) 44-161-818-6441 (Europe)  **Fax:** 1-631-938-8221

 **Email:** info@creative-diagnostics.com  **Web:** www.creative-diagnostics.com

PRODUCT INFORMATION

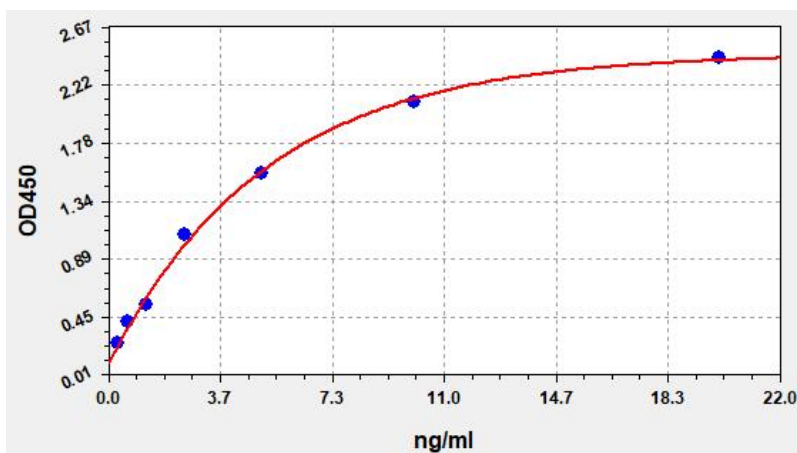
Intended Use

CETP ELISA Kit allows for the in vitro quantitative determination of CETP concentrations in serum, plasma, tissue homogenates and other biological fluids.

Storage

2-8 °C for 6 months

Typical Standard Curve



Precision

Intra-Assay: CV<8%

Inter-Assay: CV<10%

Detection Range

0.313-20ng/ml

Sensitivity

< 0.188ng/ml

Linearity

The linearity of the kit was assayed by testing samples spiked with appropriate concentration of CETP and their serial dilutions. The results were demonstrated by the percentage of calculated concentration to the expected.

Sample	1:2	1:4	1:8
serum(n=5)	85-103%	91-97%	92-101%
EDTA plasma(n=5)	83-100%	82-101%	83-100%
heparin plasma(n=5)	85-92%	83-97%	81-95%

Recovery

Matrices listed below were spiked with certain level of CETP and the recovery rates were calculated by comparing the measured value to the expected amount of CETP in samples.

Matrix	Recovery range(%)	Average(%)
serum(n=5)	86-103	94
EDTA plasma(n=5)	86-105	94
heparin plasma(n=5)	85-103	96