



User's Manual

Human Carbamylated Albumin ELISA Kit



DEIA-NS2307-81



96T



This product is for research use only and is not intended for diagnostic use.

For illustrative purposes only. To perform the assay the instructions for use provided with the kit have to be used.

Creative Diagnostics

 **Address: 45-1 Ramsey Road, Shirley, NY 11967, USA**

 **Tel: 1-631-624-4882 (USA) 44-161-818-6441 (Europe)**  **Fax: 1-631-938-8221**

 **Email: info@creative-diagnostics.com**  **Web: www.creative-diagnostics.com**

PRODUCT INFORMATION

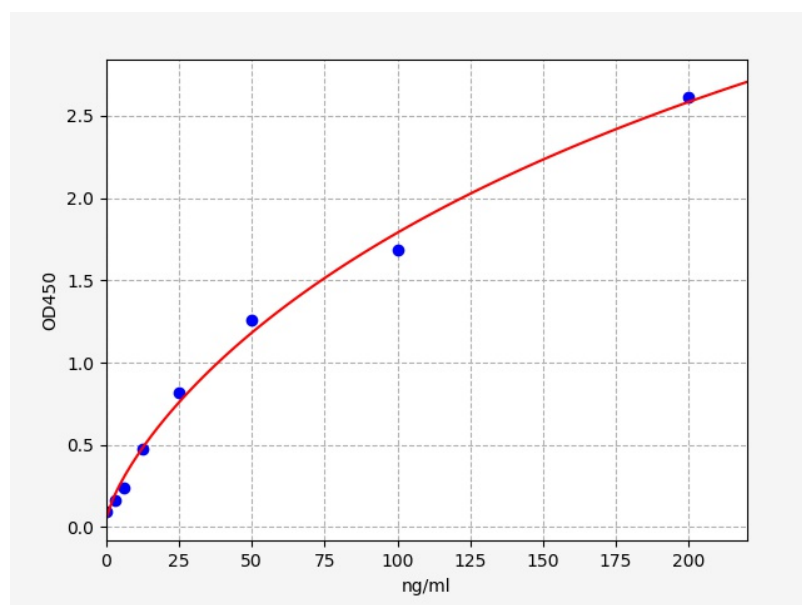
Intended Use

Carbamylated Albumin ELISA Kit allows for the in vitro quantitative determination of Carbamylated Albumin concentrations in serum, plasma, tissue homogenates and other biological fluids.

Storage

2-8 °C for 6 months

Typical Standard Curve



Precision

Intra-Assay: CV<8%

Inter-Assay: CV<10%

Detection Range

3.125-200ng/ml

Sensitivity

< 1.875ng/ml

Linearity

The linearity of the kit was assayed by testing samples spiked with appropriate concentration of Carbamylated Albumin and their serial dilutions. The results were demonstrated by the percentage of calculated concentration to the expected.

Sample	1:2	1:4	1:8
serum(n=5)	87-100%	88-102%	87-102%
EDTA plasma(n=5)	85-98%	84-97%	84-94%
heparin plasma(n=5)	88-99%	80-97%	88-98%

Recovery

Matrices listed below were spiked with certain level of Carbamylated Albumin and the recovery rates were calculated by comparing the measured value to the expected amount of Carbamylated Albumin in samples.

Matrix	Recovery range(%)	Average(%)
serum(n=5)	93-105	98
EDTA plasma(n=5)	96-104	100
heparin plasma(n=5)	89-100	94