



User's Manual

Human CAV1(Caveolin-1) ELISA Kit



DEIA-NS2307-80



96T



This product is for research use only and is not intended for diagnostic use.

For illustrative purposes only. To perform the assay the instructions for use provided with the kit have to be used.

Creative Diagnostics

 Address: 45-1 Ramsey Road, Shirley, NY 11967, USA

 Tel: 1-631-624-4882 (USA) 44-161-818-6441 (Europe)  Fax: 1-631-938-8221

 Email: info@creative-diagnostics.com  Web: www.creative-diagnostics.com

PRODUCT INFORMATION

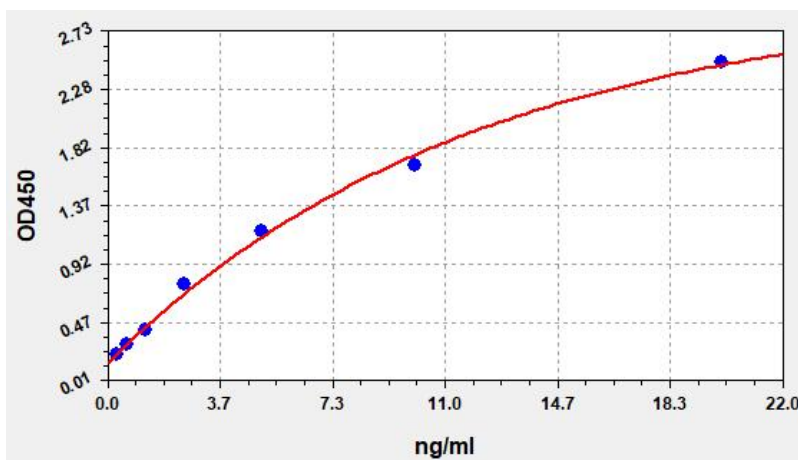
Intended Use

CAV1 ELISA Kit allows for the in vitro quantitative determination of CAV1 concentrations in serum, plasma, tissue homogenates and other biological fluids.

Storage

2-8 °C for 6 months

Typical Standard Curve



Precision

Intra-Assay: CV<8%

Inter-Assay: CV<10%

Detection Range

0.313-20ng/ml

Sensitivity

< 0.188ng/ml

Linearity

The linearity of the kit was assayed by testing samples spiked with appropriate concentration of CAV1 and their serial dilutions. The results were demonstrated by the percentage of calculated concentration to the

expected.

Sample	1:2	1:4	1:8
serum(n=5)	87-99%	93-102%	86-98%
EDTA plasma(n=5)	84-101%	83-96%	82-100%
heparin plasma(n=5)	80-100%	82-95%	83-91%

Recovery

Matrices listed below were spiked with certain level of CAV1 and the recovery rates were calculated by comparing the measured value to the expected amount of CAV1 in samples.

Matrix	Recovery range(%)	Average(%)
serum(n=5)	87-101	93
EDTA plasma(n=5)	92-105	98
heparin plasma(n=5)	89-94	91