



**User's Manual**

# Human ANXA1(Annexin A1) ELISA Kit



DEIA-NS2307-61



96T



This product is for research use only and is not intended for diagnostic use.

For illustrative purposes only. To perform the assay the instructions for use provided with the kit have to be used.

---

**Creative Diagnostics**

 **Address: 45-1 Ramsey Road, Shirley, NY 11967, USA**

 **Tel: 1-631-624-4882 (USA) 44-161-818-6441 (Europe)**  **Fax: 1-631-938-8221**

 **Email: [info@creative-diagnostics.com](mailto:info@creative-diagnostics.com)**  **Web: [www.creative-diagnostics.com](http://www.creative-diagnostics.com)**

---

## PRODUCT INFORMATION

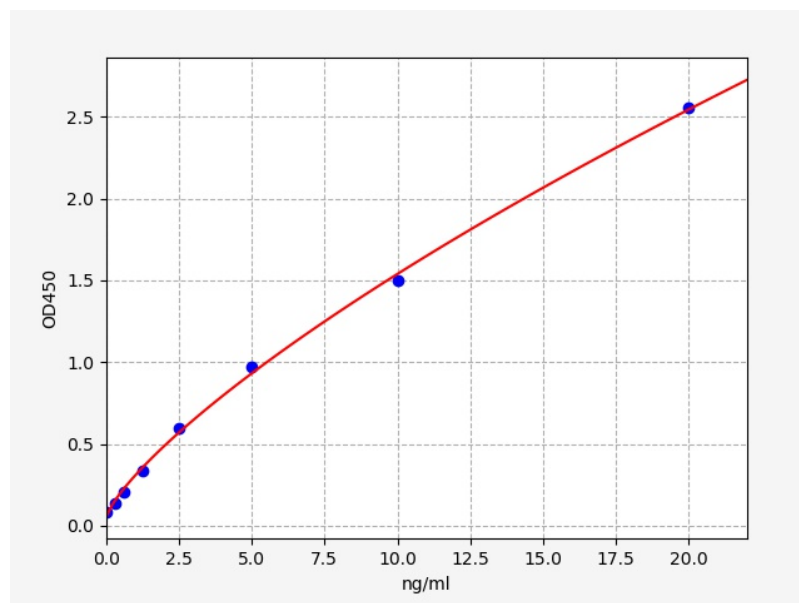
### Intended Use

ANXA1 ELISA Kit allows for the in vitro quantitative determination of ANXA1 concentrations in serum, plasma, tissue homogenates and other biological fluids.

### Storage

2-8 °C for 6 months

### Typical Standard Curve



### Precision

Intra-Assay: CV<8%

Inter-Assay: CV<10%

### Detection Range

0.313-20ng/ml

### Sensitivity

< 0.188ng/ml

### Linearity

The linearity of the kit was assayed by testing samples spiked with appropriate concentration of ANXA1 and their serial dilutions. The results were demonstrated by the percentage of calculated concentration to the expected.

Sample	1:2	1:4	1:8
serum(n=5)	88-102%	86-105%	87-101%
EDTA plasma(n=5)	82-100%	87-99%	84-91%
heparin plasma(n=5)	88-99%	82-99%	81-97%

## Recovery

Matrices listed below were spiked with certain level of ANXA1 and the recovery rates were calculated by comparing the measured value to the expected amount of ANXA1 in samples.

Matrix	Recovery range(%)	Average(%)
serum(n=5)	89-97	95
EDTA plasma(n=5)	92-104	94
heparin plasma(n=5)	88-102	96