



User's Manual

6-hydroxymelatonin sulfate ELISA Kit



DEIA-NS2307-37



96T



This product is for research use only and is not intended for diagnostic use.

For illustrative purposes only. To perform the assay the instructions for use provided with the kit have to be used.

Creative Diagnostics

 **Address: 45-1 Ramsey Road, Shirley, NY 11967, USA**

 **Tel: 1-631-624-4882 (USA) 44-161-818-6441 (Europe)**  **Fax: 1-631-938-8221**

 **Email: info@creative-diagnostics.com**  **Web: www.creative-diagnostics.com**

PRODUCT INFORMATION

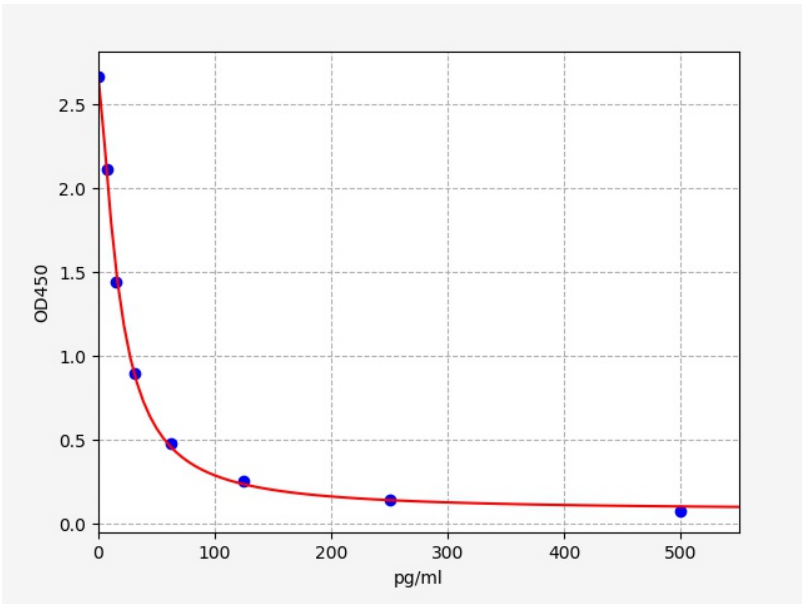
Intended Use

In vitro quantitative determination of 6-hydroxymelatonin sulfate concentrations in serum, plasma, cell culture supernatant and other biological samples.

Storage

2-8 °C for 6 months

Typical Standard Curve



Performance Characteristics

Perform the stability test for the sealed kit at 37°C and 2-8°C and get relevant data.

Elisa kit(n=5)	37°C for 1 month	2-8°C for 6 months
Average (%)	80	95-100

Precision

Intra-Assay: CV<8%

Inter-Assay: CV<10%

Detection Range

7.813-500pg/ml

Sensitivity

< 4.688pg/ml

Specificity

Specifically recognize 6-hydroxymelatonin sulfate, no obvious cross reaction with other analogues

Linearity

Dilute the sample with a certain amount of 6-hydroxymelatonin sulfate at 1:2, 1:4 and 1:8 to get the recovery range.

Matrix	1:2	1:4	1:8
Serum(n=10)	87-98%	87-95%	95-103%
EDTA Plasma(n=10)	85-99%	83-95%	92-101%
Heparin Plasma(n=10)	86-95%	82-101%	83-93%

Recovery

Add a certain amount of 6-hydroxymelatonin sulfate into the sample. Calculate the recovery by comparing the measured value with the expected amount of 6-hydroxymelatonin sulfate in the sample.

Matrix	Recovery Range (%)	Average (%)
Serum(n=10)	88-102	98
EDTA Plasma(n=10)	85-102	94
Heparin Plasma(n=10)	86-99	93