



User's Manual

Human 5-hydroxytryptamine ELISA Kit



DEIA-NS2307-34



96T



This product is for research use only and is not intended for diagnostic use.

For illustrative purposes only. To perform the assay the instructions for use provided with the kit have to be used.

Creative Diagnostics

 Address: 45-1 Ramsey Road, Shirley, NY 11967, USA

 Tel: 1-631-624-4882 (USA) 44-161-818-6441 (Europe)  Fax: 1-631-938-8221

 Email: info@creative-diagnostics.com  Web: www.creative-diagnostics.com

PRODUCT INFORMATION

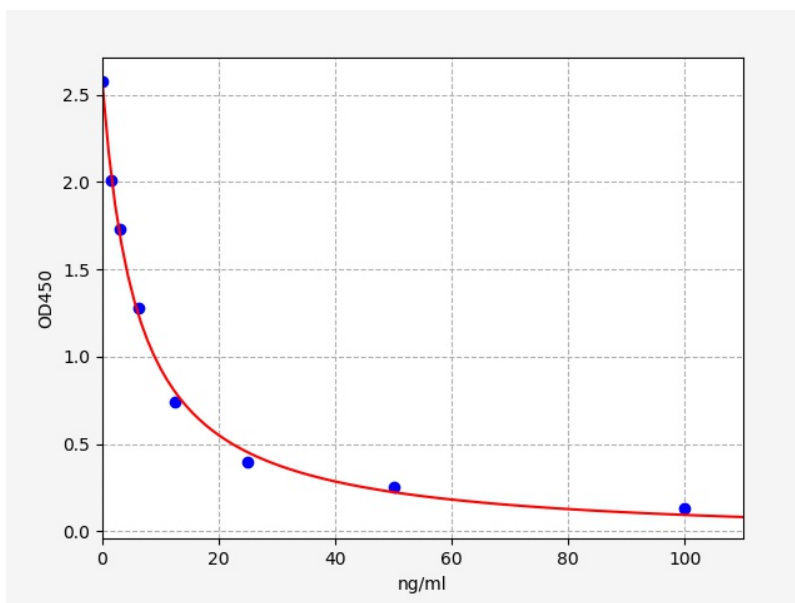
Intended Use

5-hydroxytryptamine ELISA Kit allows for the in vitro quantitative determination of 5-hydroxytryptamine concentrations in serum, plasma, tissue homogenates and other biological fluids.

Storage

2-8 °C for 6 months

Typical Standard Curve



Precision

Intra-Assay: CV<8%

Inter-Assay: CV<10%

Detection Range

1.563-100ng/ml

Sensitivity

< 0.938ng/ml

Linearity

The linearity of the kit was assayed by testing samples spiked with appropriate concentration of 5-hydroxytryptamine and their serial dilutions. The results were demonstrated by the percentage of calculated concentration to the expected.

| Sample | 1:2 | 1:4 | 1:8 |
|---------------------|---------|---------|--------|
| serum(n=5) | 92-103% | 94-105% | 88-98% |
| EDTA plasma(n=5) | 83-99% | 87-101% | 86-96% |
| heparin plasma(n=5) | 83-91% | 90-95% | 84-96% |

Recovery

Matrices listed below were spiked with certain level of 5-hydroxytryptamine and the recovery rates were calculated by comparing the measured value to the expected amount of 5-hydroxytryptamine in samples.

| Matrix | Recovery range(%) | Average(%) |
|---------------------|-------------------|------------|
| serum(n=5) | 93-104 | 97 |
| EDTA plasma(n=5) | 87-105 | 95 |
| heparin plasma(n=5) | 89-102 | 97 |