



**User's Manual**

# Human 4-HNE(4-Hydroxynonenal) ELISA Kit



DEIA-NS2307-31



96T



This product is for research use only and is not intended for diagnostic use.

For illustrative purposes only. To perform the assay the instructions for use provided with the kit have to be used.

---

**Creative Diagnostics**

 **Address:** 45-1 Ramsey Road, Shirley, NY 11967, USA

 **Tel:** 1-631-624-4882 (USA) 44-161-818-6441 (Europe)  **Fax:** 1-631-938-8221

 **Email:** [info@creative-diagnostics.com](mailto:info@creative-diagnostics.com)  **Web:** [www.creative-diagnostics.com](http://www.creative-diagnostics.com)

---

## PRODUCT INFORMATION

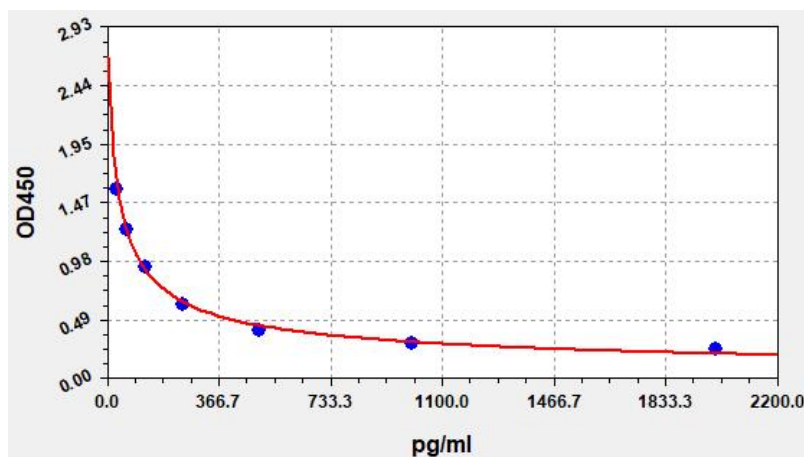
### Intended Use

4-HNE ELISA Kit allows for the in vitro quantitative determination of 4-HNE concentrations in serum, plasma, tissue homogenates and other biological fluids.

### Storage

2-8 °C for 6 months

### Typical Standard Curve



### Precision

Intra-Assay: CV<8%

Inter-Assay: CV<10%

### Detection Range

31.25-2000pg/ml

### Sensitivity

< 18.75pg/ml

### Linearity

The linearity of the kit was assayed by testing samples spiked with appropriate concentration of 4-HNE and their serial dilutions. The results were demonstrated by the percentage of calculated concentration to the expected.

Sample	1:2	1:4	1:8
serum(n=5)	89-105%	87-102%	86-104%
EDTA plasma(n=5)	85-100%	83-95%	87-101%
heparin plasma(n=5)	81-98%	84-100%	91-99%

## Recovery

Matrices listed below were spiked with certain level of 4-HNE and the recovery rates were calculated by comparing the measured value to the expected amount of 4-HNE in samples.

Matrix	Recovery range(%)	Average(%)
serum(n=5)	86-103	93
EDTA plasma(n=5)	90-104	97
heparin plasma(n=5)	85-101	93