



User's Manual

COVID-19 Spike Protein Accquant ELISA Kit



DEIA-NS2307-28



96T



This product is for research use only and is not intended for diagnostic use.

For illustrative purposes only. To perform the assay the instructions for use provided with the kit have to be used.

Creative Diagnostics

 **Address: 45-1 Ramsey Road, Shirley, NY 11967, USA**

 **Tel: 1-631-624-4882 (USA) 44-161-818-6441 (Europe)**  **Fax: 1-631-938-8221**

 **Email: info@creative-diagnostics.com**  **Web: www.creative-diagnostics.com**

PRODUCT INFORMATION

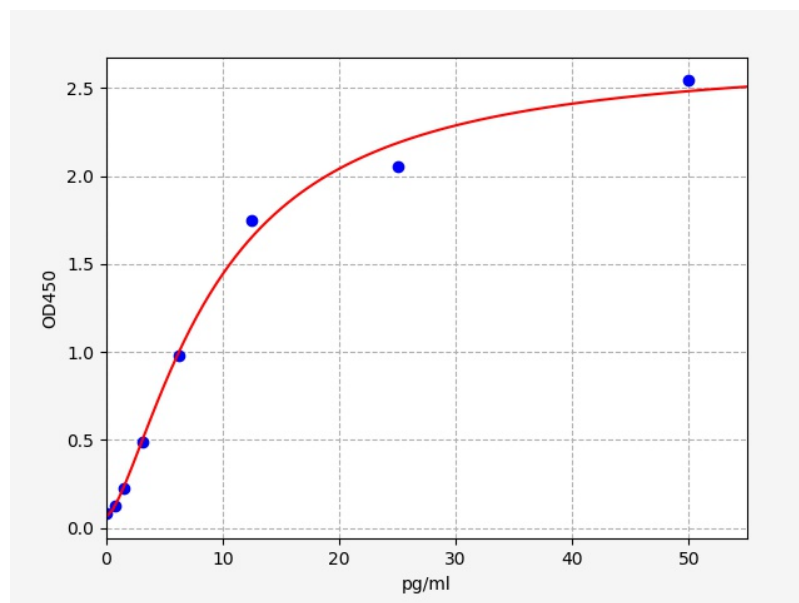
Intended Use

COVID-19 Spike Protein Accquant® ELISA Kit allows for the in vitro quantitative determination of COVID-19 Spike ELISA Kit concentrations in serum, plasma, tissue homogenates and other biological fluids.

Storage

2-8 °C for 6 months

Typical Standard Curve



Precision

Intra-Assay: CV<8%

Inter-Assay: CV<10%

Detection Range

0.78-50pg/ml

Sensitivity

< 390fg/ml

Linearity

The linearity of the kit was assayed by testing samples spiked with appropriate concentration of COVID-19 Sipke ELISA Kit and their serial dilutions. The results were demonstrated by the percentage of calculated concentration to the expected.

Sample	1:2	1:4	1:8
serum(n=5)	88-102%	87-105%	91-103%
EDTA plasma(n=5)	86-101%	83-101%	82-98%
heparin plasma(n=5)	81-98%	83-97%	90-96%
Saliva(n=5)	80-92%	90-102%	91-106%

Recovery

Matrices listed below were spiked with certain level of COVID-19 Sipke ELISA Kit and the recovery rates were calculated by comparing the measured value to the expected amount of COVID-19 Sipke ELISA Kit in samples.

Matrix	Recovery range(%)	Average(%)
serum(n=5)	87-105	95
EDTA plasma(n=5)	90-103	97
heparin plasma(n=5)	86-104	97
Saliva(n=5)	85-102	93