



User's Manual

# Canine TNF- $\alpha$ (Tumor Necrosis Factor Alpha) ELISA Kit



DEIA-NS2307-16



96T





This product is for research use only and is not intended for diagnostic use.

For illustrative purposes only. To perform the assay the instructions for use provided with the kit have to be used.

---

Creative Diagnostics

 Address: 45-1 Ramsey Road, Shirley, NY 11967, USA

 Tel: 1-631-624-4882 (USA) 44-161-818-6441 (Europe)  Fax: 1-631-938-8221

 Email: [info@creative-diagnostics.com](mailto:info@creative-diagnostics.com)  Web: [www.creative-diagnostics.com](http://www.creative-diagnostics.com)

---

## PRODUCT INFORMATION

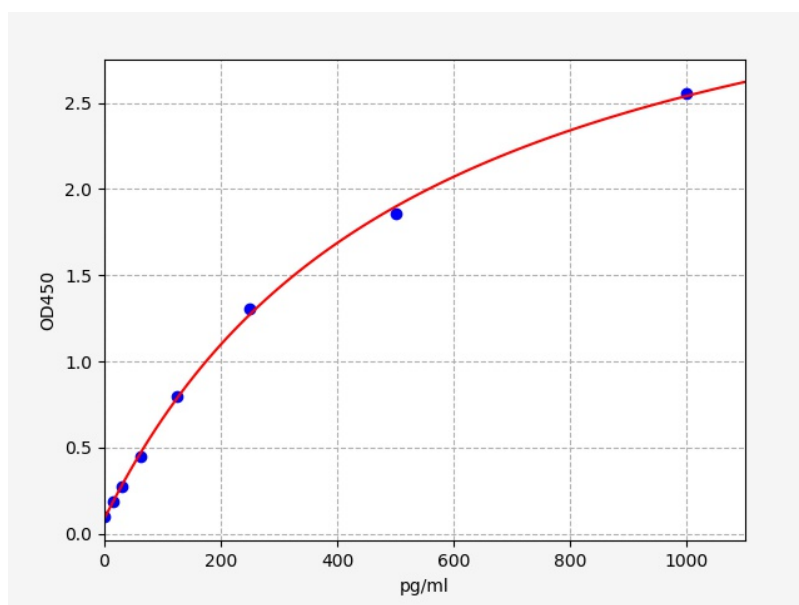
### Intended Use

TNF- $\alpha$  ELISA Kit allows for the in vitro quantitative determination of TNF- $\alpha$  concentrations in serum, plasma, tissue homogenates and other biological fluids.

### Storage

2-8 °C for 6 months

### Typical Standard Curve



### Precision

Intra-Assay: CV<8%

Inter-Assay: CV<10%

### Detection Range

15.625-1000pg/ml

### Sensitivity

< 9.375pg/ml

### Linearity

The linearity of the kit was assayed by testing samples spiked with appropriate concentration of TNF- $\alpha$  and their serial dilutions. The results were demonstrated by the percentage of calculated concentration to the expected.

Sample	1:2	1:4	1:8
serum(n=5)	91-105%	85-101%	94-101%
EDTA plasma(n=5)	87-100%	88-100%	83-89%
heparin plasma(n=5)	81-95%	80-98%	90-100%

## Recovery

Matrices listed below were spiked with certain level of TNF- $\alpha$  and the recovery rates were calculated by comparing the measured value to the expected amount of TNF- $\alpha$  in samples.

Matrix	Recovery range(%)	Average(%)
serum(n=5)	87-100	92
EDTA plasma(n=5)	90-105	96
heparin plasma(n=5)	85-105	91