



User's Manual

Human FOXP3(Forkhead box protein P3) ELISA Kit



DEIA-NS2307-129



96T



This product is for research use only and is not intended for diagnostic use.

For illustrative purposes only. To perform the assay the instructions for use provided with the kit have to be used.

Creative Diagnostics

 Address: 45-1 Ramsey Road, Shirley, NY 11967, USA



Tel: 1-631-624-4882 (USA) 44-161-818-6441 (Europe)



Fax: 1-631-938-8221



Email: info@creative-diagnostics.com



Web: www.creative-diagnostics.com

PRODUCT INFORMATION

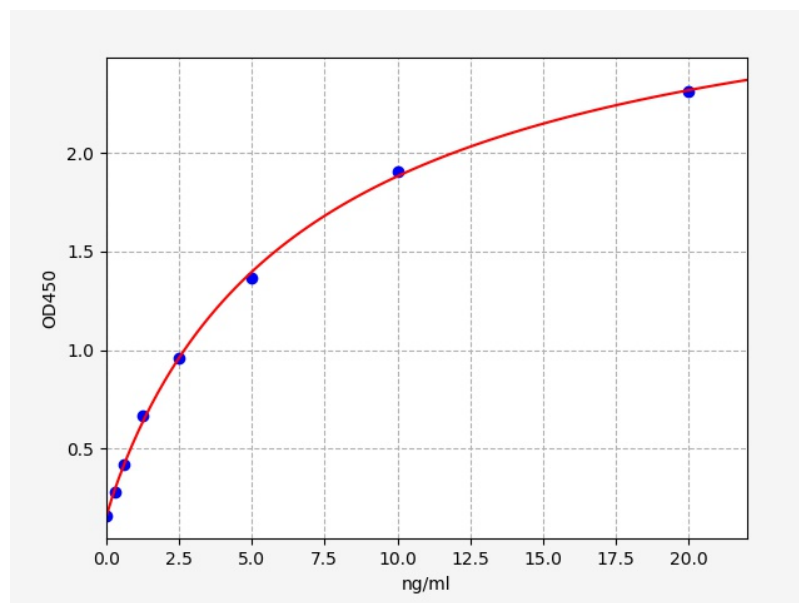
Intended Use

FOXP3 ELISA Kit allows for the in vitro quantitative determination of FOXP3 concentrations in serum, plasma, tissue homogenates and other biological fluids.

Storage

2-8 °C for 6 months

Typical Standard Curve



Precision

Intra-Assay: CV<8%

Inter-Assay: CV<10%

Detection Range

0.313-20ng/ml

Sensitivity

< 0.188ng/ml

Linearity

The linearity of the kit was assayed by testing samples spiked with appropriate concentration of FOXP3 and their serial dilutions. The results were demonstrated by the percentage of calculated concentration to the expected.

Sample	1:2	1:4	1:8
serum(n=5)	86-105%	87-101%	85-103%
EDTA plasma(n=5)	82-98%	89-99%	89-95%
heparin plasma(n=5)	84-100%	85-99%	81-99%

Recovery

Matrices listed below were spiked with certain level of FOXP3 and the recovery rates were calculated by comparing the measured value to the expected amount of FOXP3 in samples.

Matrix	Recovery range(%)	Average(%)
serum(n=5)	92-103	97
EDTA plasma(n=5)	87-105	98
heparin plasma(n=5)	86-105	97