



User's Manual

E2(Estradiol) ELISA Kit



DEIA-NS2307-123



96T



This product is for research use only and is not intended for diagnostic use.

For illustrative purposes only. To perform the assay the instructions for use provided with the kit have to be used.

Creative Diagnostics

 Address: 45-1 Ramsey Road, Shirley, NY 11967, USA

 Tel: 1-631-624-4882 (USA) 44-161-818-6441 (Europe)  Fax: 1-631-938-8221

 Email: info@creative-diagnostics.com  Web: www.creative-diagnostics.com

PRODUCT INFORMATION

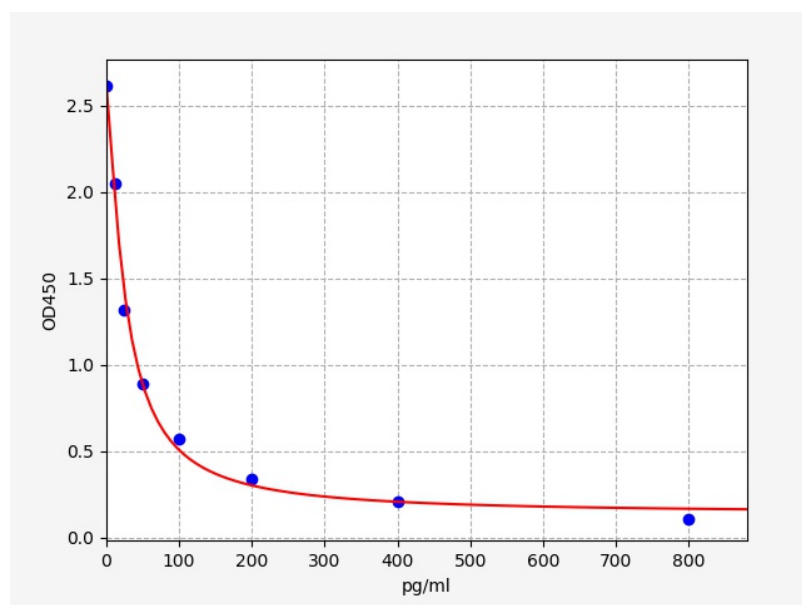
Intended Use

E2 ELISA Kit allows for the in vitro quantitative determination of E2 concentrations in serum, plasma, tissue homogenates and other biological fluids.

Storage

2-8 °C for 6 months

Typical Standard Curve



Precision

Intra-Assay: CV<8%

Inter-Assay: CV<10%

Detection Range

12.5-800pg/ml

Sensitivity

< 7.5pg/ml

Linearity

The linearity of the kit was assayed by testing samples spiked with appropriate concentration of E2 and their serial dilutions. The results were demonstrated by the percentage of calculated concentration to the expected.

Sample	1:2	1:4	1:8
serum(n=5)	85-101%	97-103%	88-100%
EDTA plasma(n=5)	85-101%	84-101%	85-100%
heparin plasma(n=5)	81-96%	88-98%	82-95%

Recovery

Matrices listed below were spiked with certain level of E2 and the recovery rates were calculated by comparing the measured value to the expected amount of E2 in samples.

Matrix	Recovery range(%)	Average(%)
serum(n=5)	87-103	95
EDTA plasma(n=5)	91-105	98
heparin plasma(n=5)	88-104	99