



## User's Manual

# Human ELN(Elastin) ELISA Kit



DEIA-NS2307-120



96T



This product is for research use only and is not intended for diagnostic use.

For illustrative purposes only. To perform the assay the instructions for use provided with the kit have to be used.

---

### Creative Diagnostics

 Address: 45-1 Ramsey Road, Shirley, NY 11967, USA

 Tel: 1-631-624-4882 (USA) 44-161-818-6441 (Europe)  Fax: 1-631-938-8221

 Email: [info@creative-diagnostics.com](mailto:info@creative-diagnostics.com)  Web: [www.creative-diagnostics.com](http://www.creative-diagnostics.com)

---

## PRODUCT INFORMATION

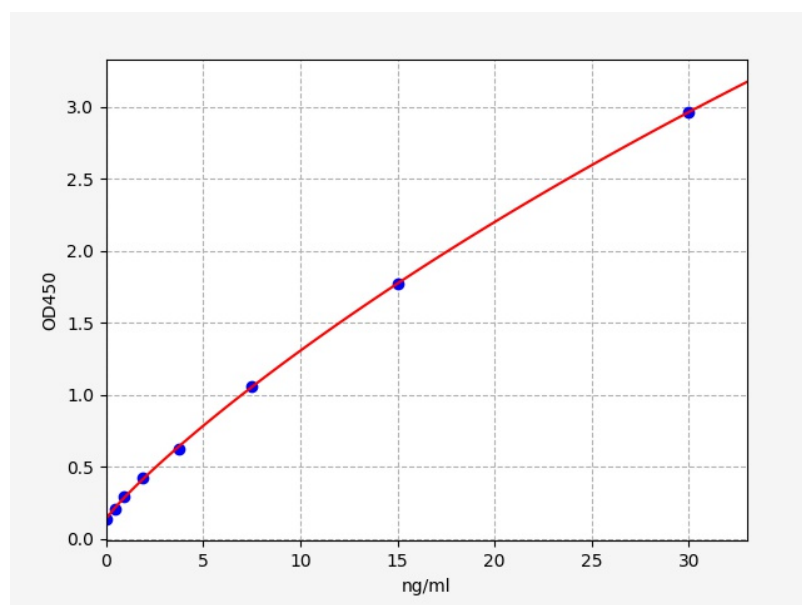
### Intended Use

ELN ELISA Kit allows for the in vitro quantitative determination of ELN concentrations in serum, plasma, tissue homogenates and other biological fluids.

### Storage

2-8 °C for 6 months

### Typical Standard Curve



### Precision

Intra-Assay: CV<8%

Inter-Assay: CV<10%

### Detection Range

0.469-30ng/ml

### Sensitivity

< 0.281ng/ml

### Linearity

The linearity of the kit was assayed by testing samples spiked with appropriate concentration of ELN and their serial dilutions. The results were demonstrated by the percentage of calculated concentration to the expected.

Sample	1:2	1:4	1:8
serum(n=5)	85-105%	89-99%	85-93%
EDTA plasma(n=5)	87-101%	85-101%	82-101%
heparin plasma(n=5)	84-100%	82-98%	90-99%

## Recovery

Matrices listed below were spiked with certain level of ELN and the recovery rates were calculated by comparing the measured value to the expected amount of ELN in samples.

Matrix	Recovery range(%)	Average(%)
serum(n=5)	85-104	98
EDTA plasma(n=5)	88-105	98
heparin plasma(n=5)	91-104	97