



**User's Manual**

# **Human EIF2AK3(Eukaryotic translation initiation factor 2-alpha kinase 3) ELISA Kit**

**REF**

**DEIA-NS2307-119**



**96T**

**RUO**

This product is for research use only and is not intended for diagnostic use.

For illustrative purposes only. To perform the assay the instructions for use provided with the kit have to be used.

---

**Creative Diagnostics**

 **Address: 45-1 Ramsey Road, Shirley, NY 11967, USA**

 **Tel: 1-631-624-4882 (USA) 44-161-818-6441 (Europe)**  **Fax: 1-631-938-8221**

 **Email: [info@creative-diagnostics.com](mailto:info@creative-diagnostics.com)**  **Web: [www.creative-diagnostics.com](http://www.creative-diagnostics.com)**

---

## PRODUCT INFORMATION

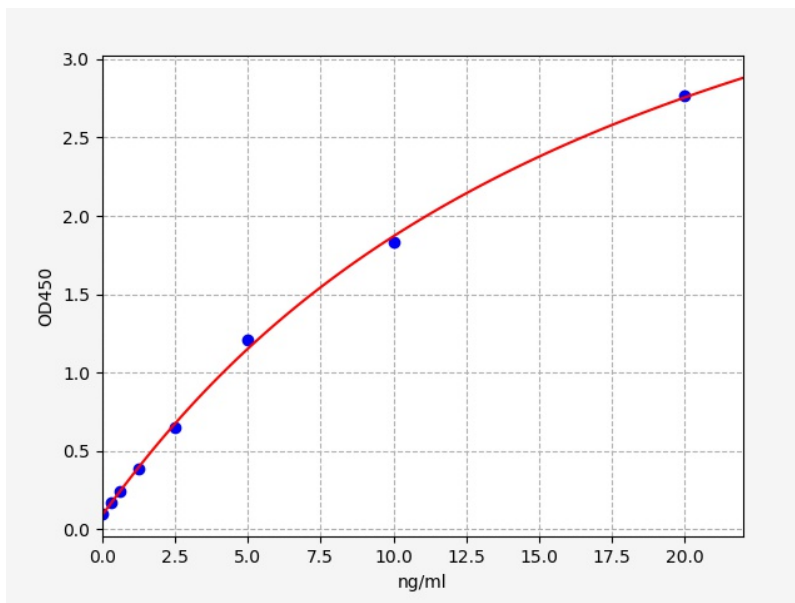
### Intended Use

EIF2AK3 ELISA Kit allows for the in vitro quantitative determination of EIF2AK3 concentrations in serum, plasma, tissue homogenates and other biological fluids.

### Storage

2-8 °C for 6 months

### Typical Standard Curve



### Precision

Intra-Assay: CV<8%

Inter-Assay: CV<10%

### Detection Range

0.313-20ng/ml

### Sensitivity

< 0.188ng/ml

### Linearity

The linearity of the kit was assayed by testing samples spiked with appropriate concentration of EIF2AK3 and their serial dilutions. The results were demonstrated by the percentage of calculated concentration to the expected.

Sample	1:2	1:4	1:8
serum(n=5)	87-102%	93-105%	90-105%
EDTA plasma(n=5)	91-98%	82-101%	84-100%
heparin plasma(n=5)	80-97%	80-98%	82-98%

## Recovery

Matrices listed below were spiked with certain level of EIF2AK3 and the recovery rates were calculated by comparing the measured value to the expected amount of EIF2AK3 in samples.

Matrix	Recovery range(%)	Average(%)
serum(n=5)	85-104	95
EDTA plasma(n=5)	85-103	92
heparin plasma(n=5)	90-105	100