



User's Manual

Human Collagenase I(Collagenase I) ELISA Kit



DEIA-NS2307-109



96T



This product is for research use only and is not intended for diagnostic use.

For illustrative purposes only. To perform the assay the instructions for use provided with the kit have to be used.

Creative Diagnostics

 **Address: 45-1 Ramsey Road, Shirley, NY 11967, USA**

 **Tel: 1-631-624-4882 (USA) 44-161-818-6441 (Europe)**  **Fax: 1-631-938-8221**

 **Email: info@creative-diagnostics.com**  **Web: www.creative-diagnostics.com**

PRODUCT INFORMATION

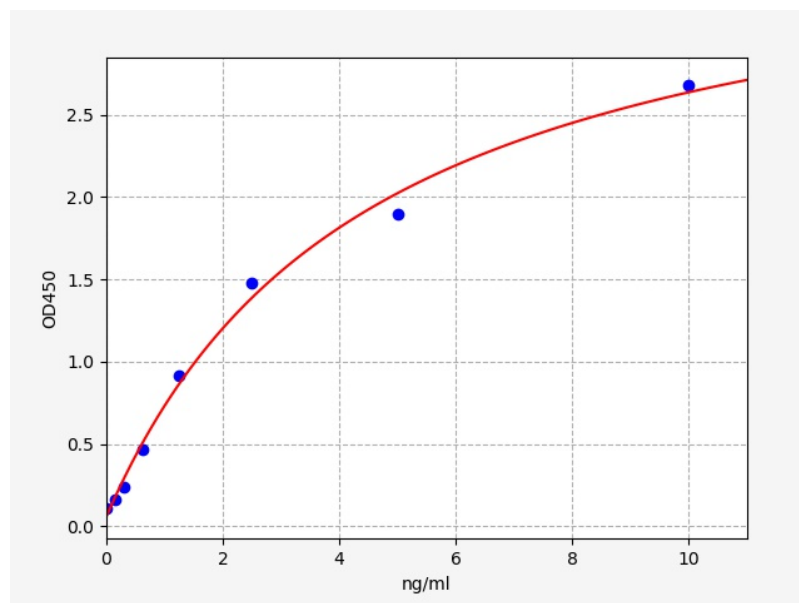
Intended Use

Collagenase I ELISA Kit allows for the in vitro quantitative determination of Collagenase I concentrations in serum, plasma, tissue homogenates and other biological fluids.

Storage

2-8 °C for 6 months

Typical Standard Curve



Precision

Intra-Assay: CV<8%

Inter-Assay: CV<10%

Detection Range

0.156-10ng/ml

Sensitivity

< 0.094ng/ml

Linearity

The linearity of the kit was assayed by testing samples spiked with appropriate concentration of Collagenase I and their serial dilutions. The results were demonstrated by the percentage of calculated concentration to the expected.

Sample	1:2	1:4	1:8
serum(n=5)	85-104%	85-105%	86-103%
EDTA plasma(n=5)	82-91%	87-96%	82-97%
heparin plasma(n=5)	80-100%	85-99%	82-94%

Recovery

Matrices listed below were spiked with certain level of Collagenase I and the recovery rates were calculated by comparing the measured value to the expected amount of Collagenase I in samples.

Matrix	Recovery range(%)	Average(%)
serum(n=5)	86-105	95
EDTA plasma(n=5)	86-103	93
heparin plasma(n=5)	93-102	99