



User's Manual

**Human
AADAT(Kynurenine/alpha-
aminoadipate
aminotransferase,
mitochondrial) ELISA Kit**

REF

DEIA-FN03



96T

RUO

This product is for research use only and is not intended for diagnostic use.

For illustrative purposes only. To perform the assay the instructions for use provided with the kit have to be used.



Tel: 1-631-624-4882 (USA) 44-161-818-6441 (Europe)



Fax: 1-631-938-8221



Email: info@creative-diagnostics.com



Web: www.creative-diagnostics.com



Tel: 1-631-624-4882 (USA)

Tel: 44-161-818-6441 (Europe)



Fax: 1-631-938-8221



Email: info@creative-diagnostics.com

PRODUCT INFORMATION

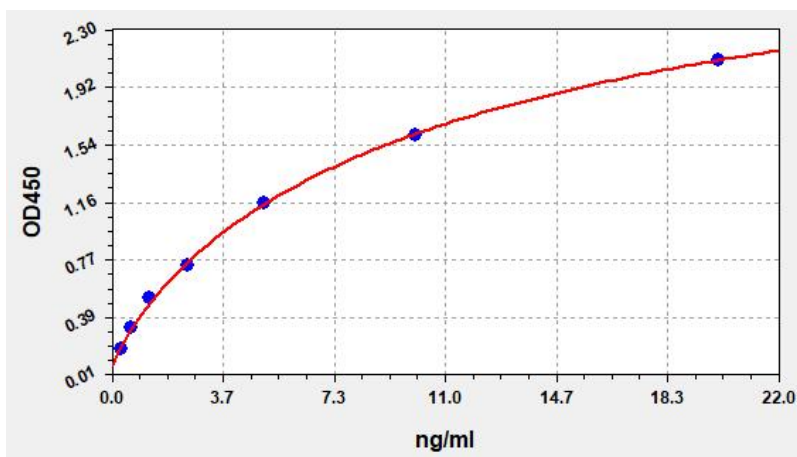
Intended Use

AADAT ELISA Kit allows for the in vitro quantitative determination of AADAT concentrations in serum, plasma, tissue homogenates and other biological fluids.

Storage

2-8 °C for 6 months

Typical Standard Curve



Precision

Intra-Assay: CV<8%

Inter-Assay: CV<10%

Detection Range

0.313-20ng/ml

Sensitivity

< 0.188ng/ml

Linearity

The linearity of the kit was assayed by testing samples spiked with appropriate concentration of AADAT and their serial dilutions. The results were demonstrated by the percentage of calculated concentration to the expected.

Sample	1:2	1:4	1:8
serum(n=5)	95-100%	92-103%	86-105%
EDTA plasma(n=5)	89-93%	83-97%	85-93%
heparin plasma(n=5)	89-99%	80-99%	89-99%

Recovery

Matrices listed below were spiked with certain level of AADAT and the recovery rates were calculated by comparing the measured value to the expected amount of AADAT in samples.

Matrix	Recovery range(%)	Average(%)
serum(n=5)	87-101	96
EDTA plasma(n=5)	92-103	99
heparin plasma(n=5)	92-105	97