



User's Manual

Rat C Reactive Protein ELISA Kit

REF

DEIA-CL002



96T



RUO

This product is for research use only and is not intended for diagnostic use.

For illustrative purposes only. To perform the assay the instructions for use provided with the kit have to be used.

Creative Diagnostics

 **Address: 45-1 Ramsey Road, Shirley, NY 11967, USA**

 **Tel: 1-631-624-4882 (USA) 44-161-818-6441 (Europe)**  **Fax: 1-631-938-8221**

 **Email: info@creative-diagnostics.com**  **Web: www.creative-diagnostics.com**

PRODUCT INFORMATION

Intended Use

CD's C Reactive Protein (PTX1) Rat in vitro ELISA (Enzyme-Linked Immunosorbent Assay) kit is designed for the quantitative measurement of C Reactive Protein in urine, plasma, serum, and cell culture supernatants.

C Reactive Protein specific antibody has been precoated onto 96-well plates and blocked. Standards or test samples are added to the wells and subsequently a C Reactive Protein specific biotinylated detection antibody is added and then followed by washing with wash buffer. Streptavidin-Peroxidase Conjugate is added and unbound conjugates are washed away with wash buffer. TMB is then used to visualize Streptavidin-Peroxidase enzymatic reaction. TMB is catalyzed by Streptavidin-Peroxidase to produce a blue color product that changes into yellow after adding acidic stop solution. The density of yellow coloration is directly proportional to the amount of C Reactive Protein captured in plate.

Displays several functions associated with host defense: it promotes agglutination, bacterial capsular swelling, phagocytosis and complement fixation through its calcium-dependent binding to phosphorylcholine. Can interact with DNA and histones and may scavenge nuclear material released from damaged circulating cells.

Reagents And Materials Provided

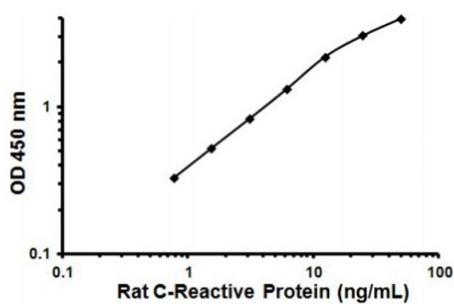
Components	1 x 96 tests
100X Streptavidin-Peroxidase Conjugate (SP Conjugate)	1 x 80µl
10X Diluent M Concentrate	1 x 30ml
20X Wash Buffer Concentrate	2 x 30ml
50X Biotinylated Rat C Reactive Protein Antibody	1 x 140µl
C Reactive Protein Microplate (12 x 8 well strips)	1 unit
C Reactive Protein Standard	1 vial
Chromogen Substrate	1 x 8ml
Sealing Tapes	3 units
Stop Solution	1 x 12ml

Storage

Store at -20°C. Please refer to protocols.

Typical Standard Curve

Representative Standard Curve



Typical Standard Curve

Precision

Intra-assay: 4.9%

Detection Range

0.78 ng/mL-50 ng/mL

Sensitivity

0.7 ng/mL

Recovery

96%