



**User's Manual**

# Mouse AST(Aspartate Aminotransferase) ELISA Kit

REF

DEIA-BJ2349



96T

RUO

This product is for research use only and is not intended for diagnostic use.

For illustrative purposes only. To perform the assay the instructions for use provided with the kit have to be used.

---

**Creative Diagnostics**

 **Address: 45-1 Ramsey Road, Shirley, NY 11967, USA**

 **Tel: 1-631-624-4882 (USA) 44-161-818-6441 (Europe)**  **Fax: 1-631-938-8221**

 **Email: [info@creative-diagnostics.com](mailto:info@creative-diagnostics.com)**  **Web: [www.creative-diagnostics.com](http://www.creative-diagnostics.com)**

---

## PRODUCT INFORMATION

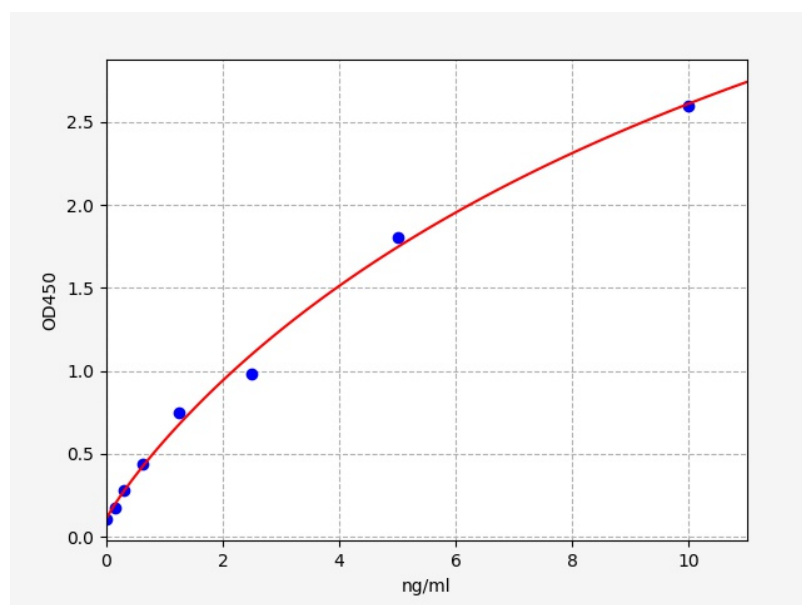
### Intended Use

AST ELISA Kit allows for the in vitro quantitative determination of AST concentrations in serum, plasma, tissue homogenates and other biological fluids.

### Storage

2-8 °C for 6 months

### Typical Standard Curve



### Precision

Intra-Assay: CV<8%

Inter-Assay: CV<10%

### Detection Range

0.156-10ng/ml

### Sensitivity

< 0.094ng/ml

### Linearity

The linearity of the kit was assayed by testing samples spiked with appropriate concentration of AST and their serial dilutions. The results were demonstrated by the percentage of calculated concentration to the expected.

Sample	1:2	1:4	1:8
serum(n=5)	87-102%	87-91%	95-105%
EDTA plasma(n=5)	82-99%	82-100%	82-98%
heparin plasma(n=5)	88-100%	82-95%	81-100%

## Recovery

Matrices listed below were spiked with certain level of AST and the recovery rates were calculated by comparing the measured value to the expected amount of AST in samples.

Matrix	Recovery range(%)	Average(%)
serum(n=5)	85-100	92
EDTA plasma(n=5)	87-100	94
heparin plasma(n=5)	90-104	97