



User's Manual

Human S100A7 ELISA Matched Antibody Pair

REF

ABPR-0804





RUO

This product is for research use only and is not intended for diagnostic use.

For illustrative purposes only. To perform the assay the instructions for use provided with the kit have to be used.

Creative Diagnostics

 **Address: 45-1 Ramsey Road, Shirley, NY 11967, USA**

 **Tel: 1-631-624-4882 (USA) 44-161-818-6441 (Europe)**  **Fax: 1-631-938-8221**

 **Email: info@creative-diagnostics.com**  **Web: www.creative-diagnostics.com**

PRODUCT INFORMATION

Intended Use

This antibody pair set comes with matched antibody pair to detect and quantify protein level of human S100A7.

General Description

The protein encoded by this gene is a member of the S100 family of proteins containing 2 EF-hand calcium-binding motifs. S100 proteins are localized in the cytoplasm and/or nucleus of a wide range of cells, and involved in the regulation of a number of cellular processes such as cell cycle progression and differentiation. S100 genes include at least 13 members which are located as a cluster on chromosome 1q21. This protein differs from the other S100 proteins of known structure in its lack of calcium binding ability in one EF-hand at the N-terminus. This protein is markedly over-expressed in the skin lesions of psoriatic patients, but is excluded as a candidate gene for familial psoriasis susceptibility. The exact function of this protein is not known.

Reagents And Materials Provided

Antibody pair set content:

1. Capture antibody: rabbit affinity purified polyclonal anti-S100A7 (100 µg)
2. Detection antibody: mouse monoclonal anti-S100A7, IgG1 Kappa (20 µg)

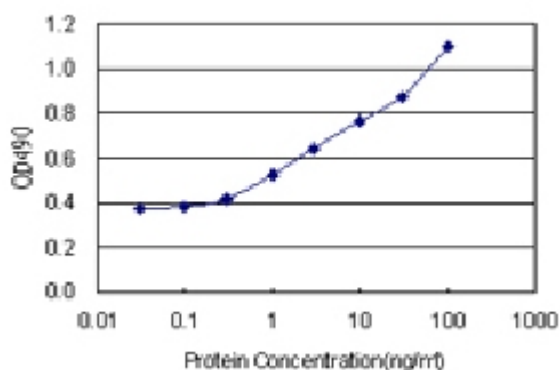
Note: Reagents are sufficient for at least 1-2 x 96 well plates using recommended protocols.

Reconstitution And Storage

Store reagents of the antibody pair set at -20°C or lower. Please aliquot to avoid repeated freeze thaw cycle. Reagents should be returned to -20°C storage immediately after use.

Quality Control

Standard curve using recombinant protein (DAGHH-001) as an analyte.



QC Testing of ABPR-0804

Sandwich ELISA detection sensitivity ranging from 0.3 ng/ml to 100 ng/ml.